



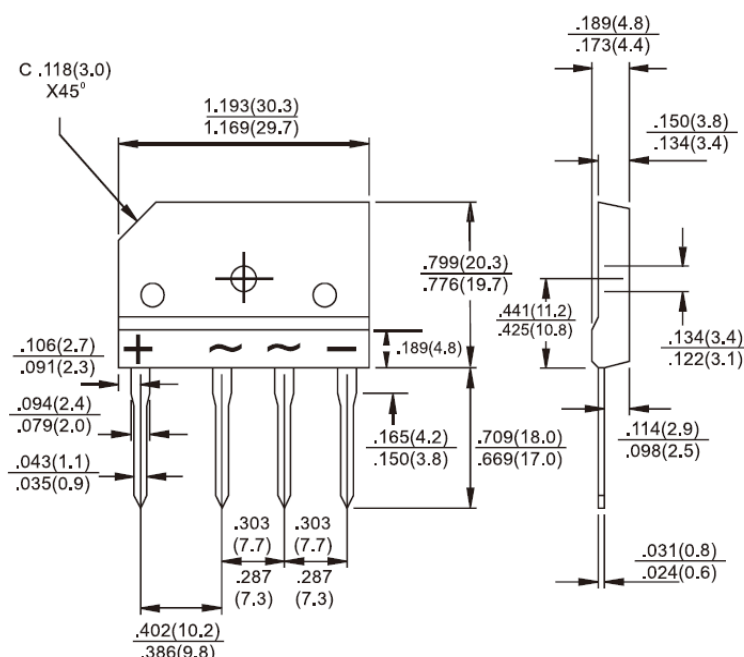
TS8P01G - TS8P07G

Single Phase 8.0 AMPS. Glass Passivated Bridge Rectifiers

TS-6P

Features

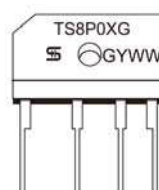
- ✧ UL Recognized File # E-326243
- ✧ Glass passivated junction
- ✧ Ideal for printed circuit board
- ✧ High case dielectric strength of 2000V_{RMS}
- ✧ Plastic material has Underwriters Laboratory Flammability Classification 94V-0
- ✧ Typical IR less than 0.1 uA
- ✧ High surge current capability to 200A
- ✧ High temperature soldering guaranteed: 260°C / 10 seconds at 5 lbs.,(2.3kg) tension
- ✧ Green compound with suffix "G" on packing code & prefix "G" on datecode.



Mechanical Data

- ✧ Case: Molded plastic body
- ✧ Terminals: Pure tin plated , Lead free. Leads solderable per MIL-STD-202 Method 208
- ✧ Weight: 7.15 grams
- ✧ Mounting torque : 8.17 in. lbs. Max.

Dimensions in inches and (millimeters)



Marking Diagram

- TS8P0XG = Specific Device Code
 G = Green Compound
 Y = Year
 WW = Work Week

Maximum Ratings and Electrical Characteristics

Rating at 25 °C ambient temperature unless otherwise specified.

Single phase, half wave, 60 Hz, resistive or inductive load.

For capacitive load, derate current by 20%

Type Number	Symbol	TS8P 01G	TS8P 02G	TS8P 03G	TS8P 04G	TS8P 05G	TS8P 06G	TS8P 07G	Units
Maximum Recurrent Peak Reverse Voltage	V_{RRM}	50	100	200	400	600	800	1000	V
Maximum RMS Voltage	V_{RMS}	35	70	140	280	420	560	700	V
Maximum DC Blocking Voltage	V_{DC}	50	100	200	400	600	800	1000	V
Maximum Average Forward Rectified Current @ $T_C=110^{\circ}C$	$I_{F(AV)}$	8							A
Peak Forward Surge Current, 8.3 ms Single Half Sine-wave Superimposed on Rated Load (JEDEC method)	I_{FSM}	200							A
Rating of fusing ($t < 8.3ms$)	I^2t	166							A ² S
Maximum Instantaneous Forward Voltage (Note 1) @ 4 A @ 8 A	V_F	1.0 1.1							V
Maximum DC Reverse Current @ $T_A=25^{\circ}C$ at Rated DC Blocking Voltage @ $T_A=125^{\circ}C$	I_R	10 500							uA uA
Typical Junction Capacitance Per Leg (Note 2)	C_j	67							pF
Typical Thermal Resistance	$R_{\theta JC}$	1.4							°C/W
Operating Temperature Range	T_J	- 55 to + 150							°C
Storage Temperature Range	T_{STG}	- 55 to + 150							°C

Note 1 : Pulse Test with PW=300 usec, 1% Duty Cycle

Note 2 : Measured at 1MHz applied Reverse bias of 4.0V DC.

RATINGS AND CHARACTERISTIC CURVES (TS8P01G THRU TS8P07G)

FIG.1- MAXIMUM FORWARD CURRENT DERATING CURVE

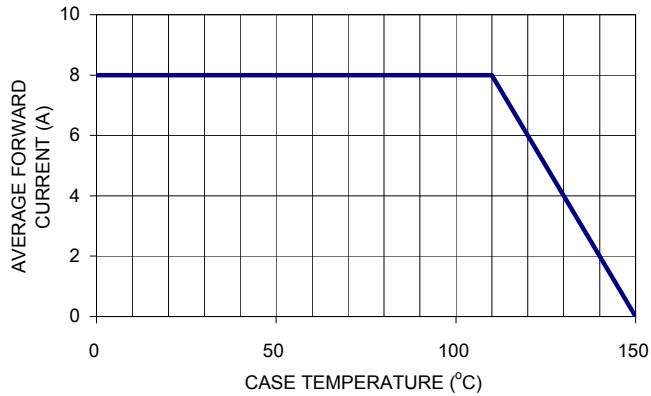


FIG. 2- TYPICAL REVERSE CHARACTERISTICS PER BRIDGE ELEMENT

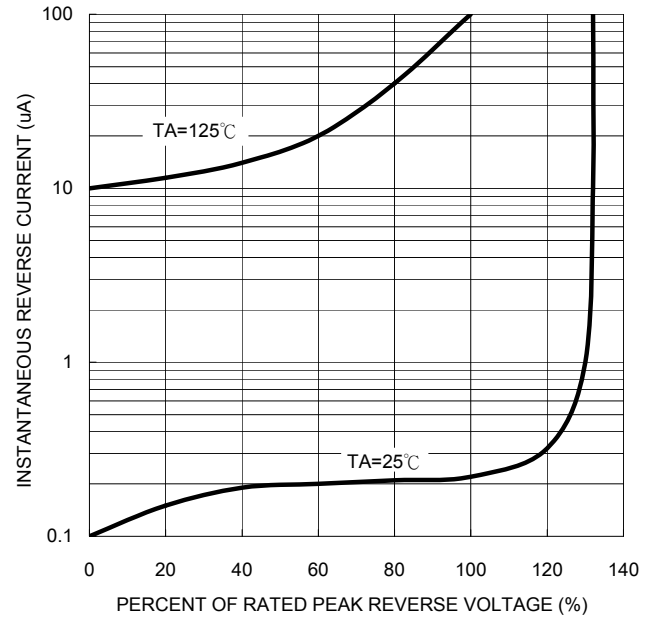


FIG.3- MAXIMUM NON-REPETITIVE FORWARD SURGE CURRENT PER BRIDGE ELEMENT

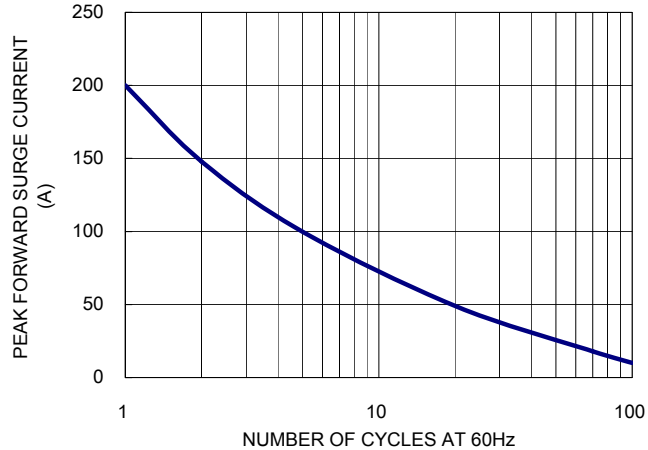


FIG. 4- TYPICAL JUNCTION CAPACITANCE

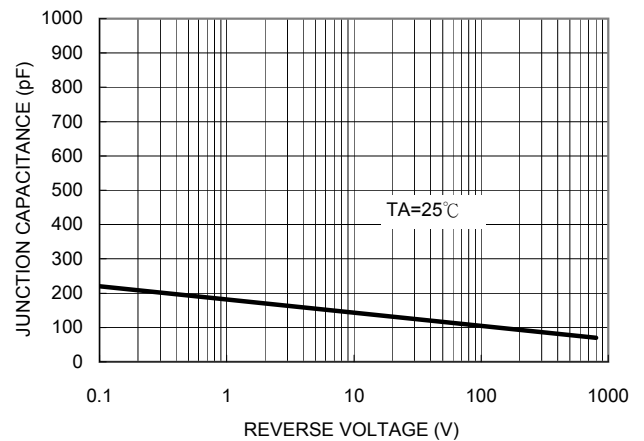


FIG. 5- TYPICAL FORWARD CHARACTERISTICS PER BRIDGE ELEMENT

