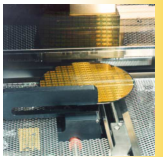
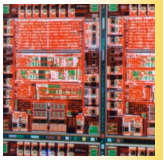
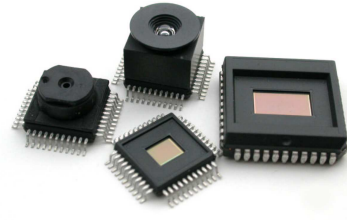


Product Information

The **MLX75006** and **MLX75007**, automotive CMOS cameras, are designed to target most of the applications for inside and outside vision. These sensors combine high speed with high sensitivity, low noise, high reliability and low (system) cost, as required by the automotive market. The 75006 (CIF) and the 75007 (PVGA) versions only differ by the amount of pixels. The PVGA version is available in color and black-and-white.

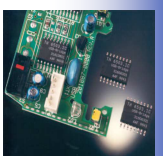
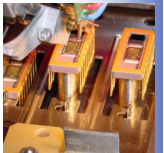
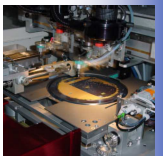


Automotive CMOS CameraICs

With synchronous shutter and very high sensitivity

Features

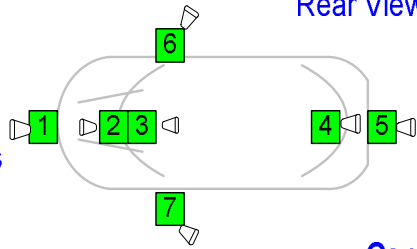
- Camera-on-a-chip (fully integrated device with plastic package [option] and integrated lens [option])
- 100% electrical and optical test**
- High sensitivity**
- High dynamic range**
- Linear, bilinear, triple slope or log response**
- Low noise (fixed-pattern-noise, dark current,...)
- High quantum efficiency and fill-factor
- Synchronous shutter**
 - Up to 33MHz operation
 - Single 3.3V supply
 - Fully programmable (SPI)
 - On chip FPN correction
 - On chip bad/hot pixels correction
 - Standby mode
 - High frame rate
- 40 to 105°C guaranteed image quality
- High reliability (integrity checks)
- Non-blooming
- Automotive, industrial or medical
- No microlenses (pure CMOS)
- ...



Applications

Camera 6 / 7:
Blind spot detection

Camera 1:
Obstacle detection,
Lane Tracking,
Night Vision,
Light sensor,
High Beam headlights



Camera 4:
Rear View

Camera 5:
Park Assist

Camera 2:
Obstacle detection,
Lane Tracking,
Rain Detection,
Light Sensor,
High Beam Headlights,
Road Sign Recognition

Camera 3:
Interior Monitoring,
Smart Airbags,
Driver vigilance,
Driver ID,
Best View,
Rear View



Road sign recognition



Seat occupancy

The requirements of all these applications have been taken into account in the design so that the same standard product should match all customer requirements.

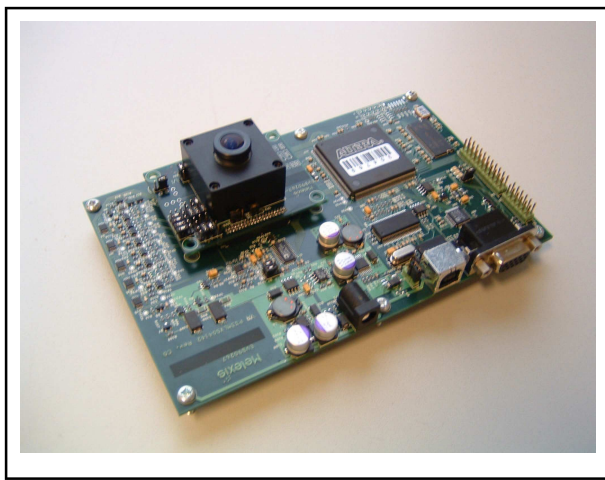


Lane tracking



Night vision

Evaluation board available



- MLX75006 or MLX75007
 - Black and white or color
 - Lenses available
 - USB connection (programming and readout)
 - SVGA output
 - Trigger in / trigger out pins
 - Flash pulse signal
 - Software
- EVB90267

Email Europe:
sales_europe@melexis.com

Email USA and rest of the world:
sales_usa@melexis.com

For additional information go to our website at: www.melexis.com

Melexis
Microelectronic Integrated Systems