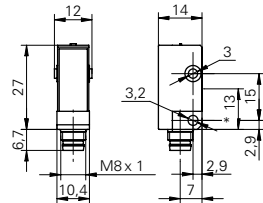


## Through beam sensors

## FSDK 10D9601/S35A

## dimension drawing



\* emitter axis

## general data

|                     |                     |
|---------------------|---------------------|
| type                | through beam sensor |
| emitter / receiver  | emitter             |
| light source        | pulsed red LED      |
| actual range $S_b$  | 5 m                 |
| nominal range $S_n$ | 6 m                 |
| wave length         | 660 nm              |

## electrical data

|                                    |               |
|------------------------------------|---------------|
| voltage supply range +Vs           | 10 ... 30 VDC |
| current consumption max. (no load) | 23 mA         |
| current consumption typ.           | 15 mA         |
| reverse polarity protection        | yes           |

## mechanical data

|                  |                    |
|------------------|--------------------|
| width / diameter | 10,4 mm            |
| height / length  | 27 mm              |
| depth            | 14 mm              |
| type             | rectangular        |
| housing material | plastic (ASA)      |
| front (optics)   | PMMA               |
| connection types | connector M8 4 pin |

## ambient conditions

|                       |                |
|-----------------------|----------------|
| operating temperature | -25 ... +65 °C |
| protection class      | IP 67          |

## photo



## connection diagram

