

Sine encoders

End shaft $\varnothing 12$ mm and $\varnothing 14$ mm

Resolution 1024...5000 pulses

HOGS 71



HOGS 71

Features

- Encoder with end shaft $\varnothing 12$ -14 mm
- Resolution max. 5000 ppr
- Sine output signals 1 Vpp
- Low harmonic content (patented LowHarmonics technology)
- Compact, robust die-cast housing
- Inside connecting terminals
- Patented expansion anchor for mounting on the motor fan guard
- High protection IP 66

Technical data - electrical ratings

Voltage supply	5 VDC ± 10 % 9...30 VDC
Consumption w/o load	≤ 90 mA
Resolution (steps/turn)	1024...5000
Phase shift	90°
Reference signal	Zero pulse, width 90°
Sensing method	Optical
Output signals	A, B, C + inverted
Output circuit	Sine/cosine 1 Vpp
Interference immunity	DIN EN 61000-6-2
Emitted interference	DIN EN 61000-6-4
Approval	UL approval / E256710
Offset sine/cosine amplitude	≤ 20 mV
Harmonics share approx.	-50 dB
Spectrum	250 kHz (-3 dB)
Overlying constant share	≤ 20 mV

Technical data - mechanical design

Dimensions (flange)	$\varnothing 60$ mm
Shaft	$\varnothing 12$...14 mm end shaft
Shaft loading	≤ 30 N axial ≤ 40 N radial
Protection DIN EN 60529	IP 66
Operating speed	≤ 10000 rpm (mechanical)
Operating torque typ.	1 Ncm
Rotor moment of inertia	60 gcm ²
Materials	Housing: aluminium die-cast Shaft: stainless steel
Operating temperature	-20...+85 °C
Resistance	IEC 60068-2-6 Vibration 10 g, 10-2000 Hz IEC 60068-2-27 Shock 300 g, 6 ms
Explosion protection	II3G Ex nA IIC T4 Gc X (gas) II3D Ex tc IIIB T85°C Dc (dust)
Connection	Connecting terminal
Weight approx.	350 g

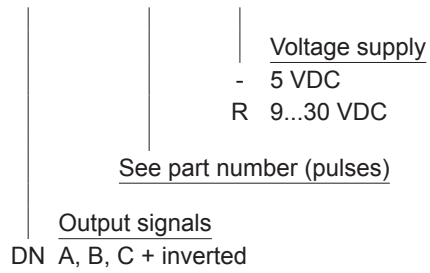
Sine encoders

End shaft \varnothing 12 mm and \varnothing 14 mm
Resolution 1024...5000 pulses

HOGS 71

Part number

HOGS 71 **DN**



Accessories

Connectors and cables

HEK 8 Sensor cable for encoders

Diagnostic accessories

HENQ 1100 Analyzer for encoders

Part number (pulses)

1024 | 2048 | 5000

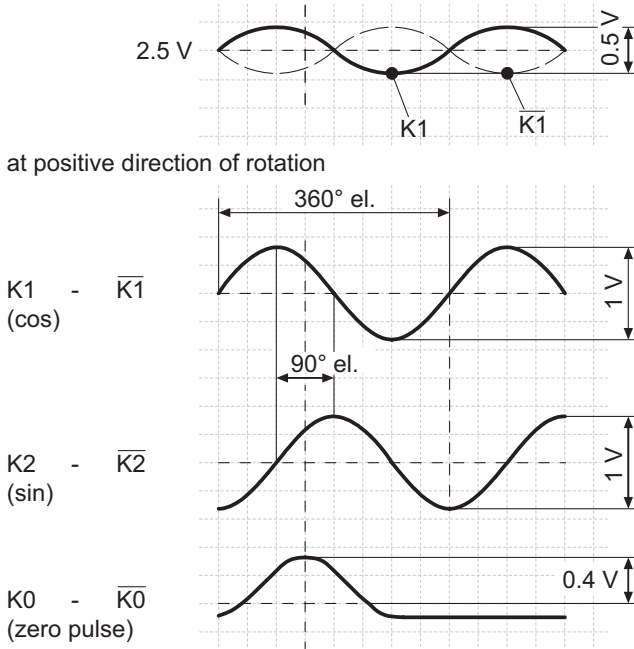
Sine encoders

End shaft $\varnothing 12$ mm and $\varnothing 14$ mm

Resolution 1024...5000 pulses

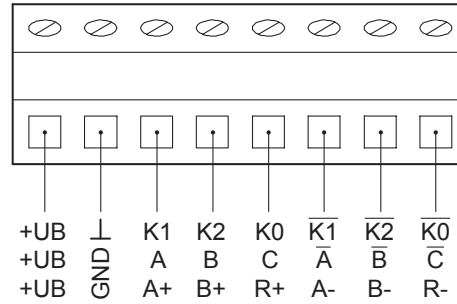
HOGS 71

Output signals

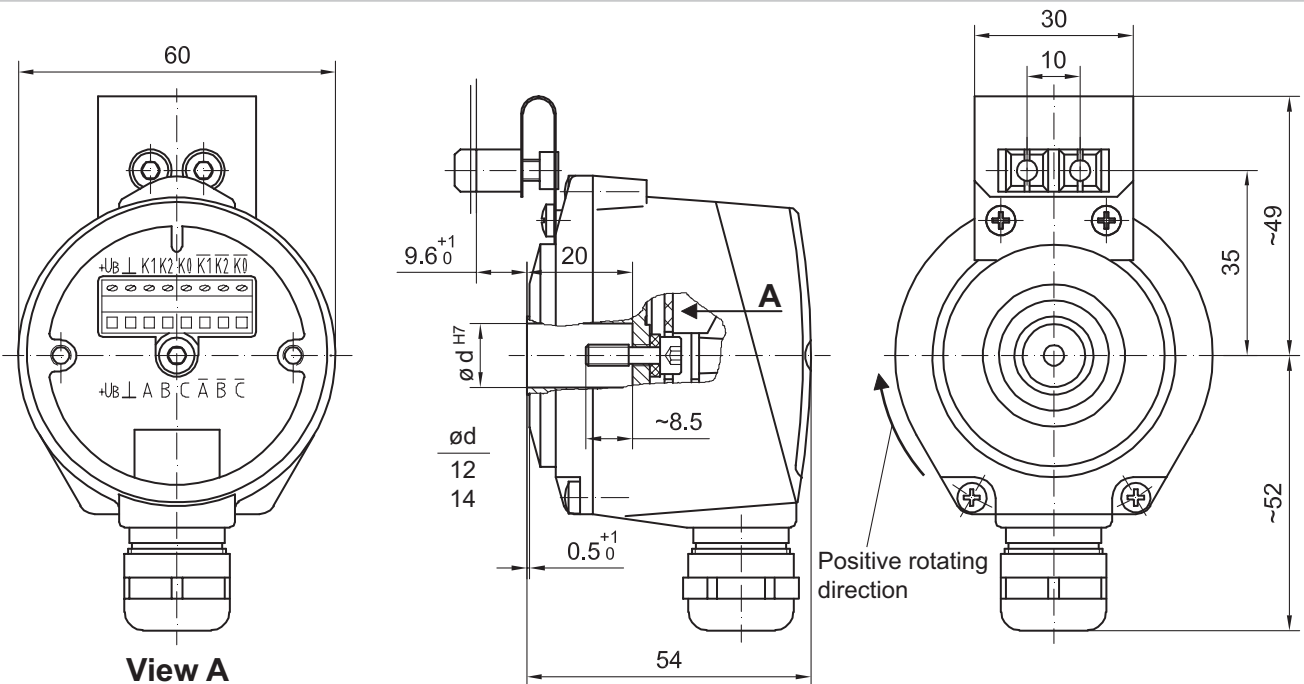


Terminal assignment

View A - Connecting terminal inside the encoder



Dimensions



Sine encoders

End shaft \varnothing 12 mm and \varnothing 14 mm

Resolution 1024...5000 pulses

HOGS 71