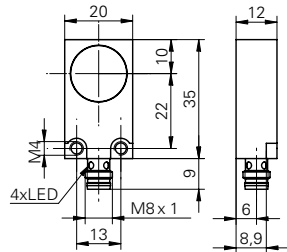


## Inductive linear sensors

## IWFM 20I9501/S35

## dimension drawing



## general data

mounting type	shielded
measuring distance $S_d$	2 ... 5 mm
reference distance	3,25 ... 3,75 mm
measuring speed	< 1 mm / ms
repeat accuracy	< 0,01 mm
linearity error	$\pm 100 \mu\text{m}$
temperature coefficient	1 $\mu\text{m}$ / (K mm)

## electrical data

voltage supply range +Vs	15 ... 30 VDC
current consumption max. (no load)	35 mA
output circuit	current output
output signal	4 ... 20 mA
load resistance +Vs min.	< 500 Ohm
load resistance +Vs max.	< 1000 Ohm
residual output ripple	< 0,5 % Vs
short circuit protection	yes
reverse polarity protection	yes

## mechanical data

type	rectangular
housing material	brass nickel plated
dimension	20 mm
housing length	35 mm
connection types	connector M8

## ambient conditions

operating temperature	0 ... +60 °C
protection class	IP 67

## photo



## connection diagram

