

"Classic" Plate (700 Series)

Power



"CLASSIC" ENCLOSED PLATE TRANSFORMERS

- Primary 115 VAC, 50/60 Hz.
- At 2,000 VAC and above, secondary leads are through rubber bushings (figure B).
- Units can be run full wave bridge or full wave C.T.
- Enclosed, 4 hole chassis mount.
- Minimum 6" long leads.
- Class A insulation (105 degrees C).
- Hi-Pot test at a minimum of twice secondary voltage
- Conservative designs - CSA certified (# LR3902).

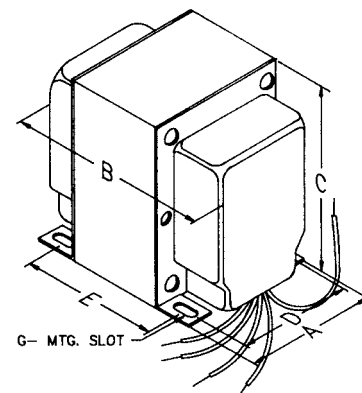


Fig. A G- MTG. SLOT

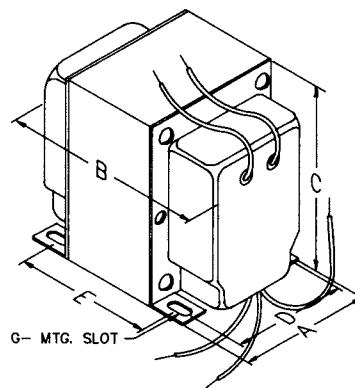
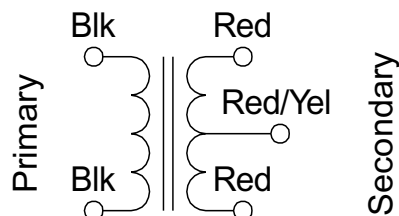


Fig. B

Transformer Schematic



| Part No. | VA | A.C. High Voltage Secondary (CCS) R.M.S. | Dwg. Type | Dimensions (Inches) | | | | | Wt. Lb. |
|----------|-------|--|-----------|---------------------|------|------|------|------|---------|
| | | | | A | B | C | D | E | |
| 710 | 110 | 750V C.T. @ 147ma. | A | 3.75 | 4.13 | 4.50 | 3.00 | 2.25 | 7.2 |
| 712 | 130 | 850V C.T. @ 215ma. | A | 3.75 | 4.63 | 4.50 | 3.00 | 2.75 | 8.8 |
| 714 | 180 | 1,020V C.T. @ 170ma. | A | 3.13 | 3.75 | 3.75 | 2.50 | 2.38 | 5.5 |
| 715 | 200 | 1,020V C.T. @ 300ma. | A | 3.75 | 4.63 | 4.50 | 3.00 | 2.75 | 9.0 |
| 717 | 510 | 1,020V C.T. @ 500ma. | A | 5.00 | 5.25 | 6.50 | 4.56 | 3.25 | 17.7 |
| 718 | 235 | 1,250V C.T. @ 200ma. | A | 3.75 | 4.38 | 4.50 | 3.00 | 2.50 | 8.0 |
| 720 | 370 | 1,250V C.T. @ 300ma. | A | 3.75 | 5.38 | 4.50 | 3.00 | 3.50 | 12.0 |
| 722 | 625 | 1,250V C.T. @ 500ma. | A | 5.00 | 5.25 | 6.50 | 4.56 | 3.25 | 17.7 |
| 724 | 345 | 1,500V C.T. @ 226ma. | A | 3.75 | 5.25 | 4.50 | 3.00 | 3.38 | 12.0 |
| 726 | 312 | 1,790V C.T. @ 175ma. | A | 3.75 | 5.25 | 4.50 | 3.00 | 3.38 | 12.0 |
| 728 | 210 | 2,000V C.T. @ 175ma. | B | 3.75 | 5.25 | 4.50 | 3.00 | 3.38 | 12.0 |
| 732 | 500 | 2,500V C.T. @ 200ma. | B | 5.00 | 5.25 | 6.50 | 4.56 | 3.25 | 17.7 |
| 733 | 750 | 2,500V C.T. @ 300ma. | B | 5.00 | 6.00 | 6.50 | 4.56 | 4.00 | 24.0 |
| 735 | 735 | 3,000V C.T. @ 250ma. | B | 5.00 | 6.00 | 6.50 | 4.56 | 4.00 | 24.0 |
| 737 | 1,200 | 3,000V C.T. @ 400ma. | B | 5.00 | 7.00 | 6.50 | 4.56 | 5.00 | 28.5 |
| 739 | 1,400 | 3,500V C.T. @ 400ma. | B | 5.00 | 7.63 | 6.50 | 4.56 | 5.50 | 34.7 |

Notes : CCS = Continuous Commercial Service
 ICAS = Intermittent Commercial or Amateur Service - increase current by multiplying by a factor of 1.50



CANADA
 Guelph, Ontario (519) 822-2960
 St. Laurent, Quebec (514) 343-9010
USA
 Cheektowaga, NY (716) 630-7030

www.hammondmfg.com



EUROPE
 Basingstoke, UK 01256 812812

AUSTRALIA
 Queenstown, Australia 61-8-8240-2244