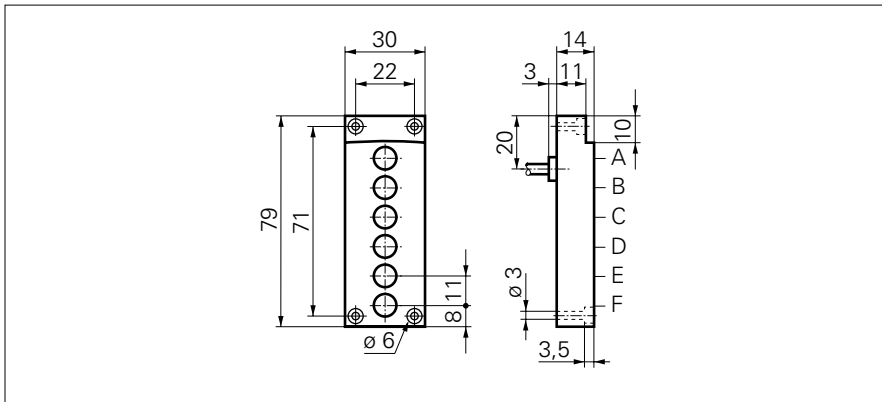


Inductive sensors special versions

ILFK 12P1501/I06

dimension drawing



general data

| | |
|--------------------------------|-----------------------|
| mounting type | shielded |
| special type | inductive code reader |
| nominal sensing distance S_n | 2 mm |
| hysteresis | 1 ... 20 % of S_r |

electrical data

| | |
|------------------------------------|------------------------|
| switching frequency | < 2 kHz |
| voltage supply range +Vs | 10 ... 30 VDC |
| current consumption max. (no load) | 20 mA |
| output circuit | PNP make function (NO) |
| voltage drop V_d | < 2 VDC |
| output current | < 200 mA |
| short circuit protection | yes |
| reverse polarity protection | yes |

mechanical data

| | |
|-------------------------|-------------|
| type | rectangular |
| material (sensing face) | PA 6 |
| housing material | PA 6 |
| dimension | 30 mm |
| housing length | 79 mm |
| connection types | cable, 2 m |

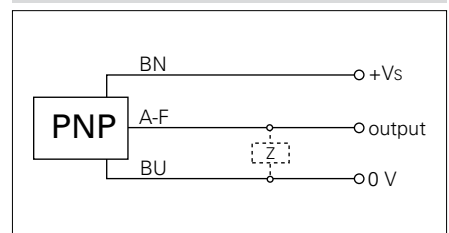
ambient conditions

| | |
|-----------------------|--------------|
| operating temperature | 0 ... +60 °C |
| protection class | IP 67 |

photo



connection diagram



- reduced wiring
- PA 6 plastic body