

# MEP5 - MMN5 Safety industrial pressure gauges

Can be used in corrosive gases and liquids that are not crystallizing

Accuracy Class 1

Bourdon tube stainless steel (MEP5) or monel (MMN5)

Fully welded process connection

Wide variety of pressure ranges

Without or with dampening fluid

Safety version S3 according to European Standard EN 837-1

Conform to European Pressure Equipment Directive (PED) 97/23/CE

Approval Lloyd's Register

These gauges have been specifically designed to fulfil the requirements of aggressive environments and fluids. External parts, sensing element and connection are made of stainless steel.

These versions have been developed with solid front and blow-out back which immediately releases in the event of accidental tube rupture.

These safety gauges include a special compensating diaphragm which maintains accuracy by equalizing internal and atmospheric pressures.



## Technical Data (20 °C)

<b>Nominal size</b>	100 mm
<b>Measurement range</b>	<b>MEP5</b> -1 ... 0 to 0 ... 1600 bar <b>MMN5</b> -1 ... 0 to 0 ... 600 bar
<b>Working pressure</b> (-1 ≤ P ≤ 600 bar)	Steady: 100% F.S. Fluctuating: 90% F.S. Short time: 130% F.S.
<b>(P ≥ 1000 bar)</b> <b>only MEP5</b>	Steady: 75% F.S. Fluctuating: 60% F.S. Short time: 100% F.S.
<b>Accuracy class</b>	1 (Class 2.5 for 0.6 bar filled)
<b>Protection rating</b>	IP 67 (EN 60529)
<b>Process connection</b>	
<b>Type</b>	G1/4, 1/4NPT, G1/2, 1/2NPT, G3/8, M20x1.5
<b>Material</b>	<b>MEP5</b> st. steel 1.4404 (AISI 316L) <b>MMN5</b> Monel 400
<b>Case</b>	St. steel 1.4301 (AISI 304) (Option 1.4404)
<b>Bezel ring</b>	St. steel 1.4301 (AISI 304) (Option 1.4404)
<b>Bourdon tube</b>	<b>MEP5</b> st. steel 1.4404 (AISI 316L) <b>MMN5</b> Monel 400
<b>Movement</b>	St. steel
<b>Window</b>	Instrument glass
<b>Window gasket</b>	Elastomer
<b>Dial</b>	Aluminium
<b>Pointer</b>	Aluminium
<b>Temperature</b>	Ambient -20 ... +70 °C Process -40 ... +200 °C (not filled) Process -20 ... +70 °C (filled BH1) (The gauge temperature does not exceed +70 °C) Storage -40 ... +70 °C Drift ± 0.4% FS/10 °C
<b>Safety</b>	S3 Safety pattern gauge with baffle wall and blow-out back
<b>Compensation diaphragm</b>	Elastomer

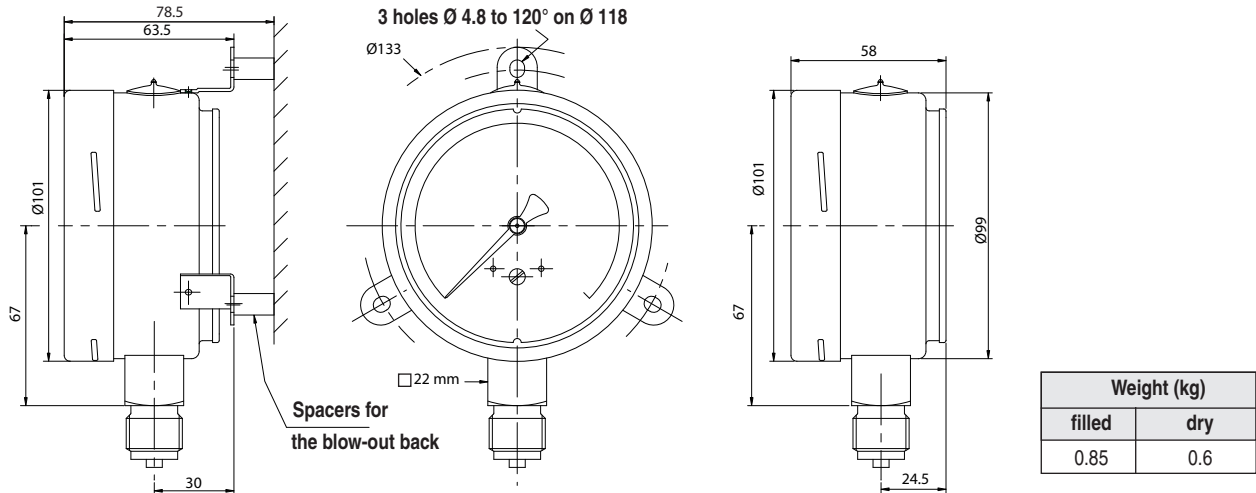
## Options

<b>Accuracy class</b>	0.5 P > 1 bar 0.6 P > 1 bar	<b>Code 0843</b> <b>Code 0840</b>
<b>Version Ex (ATEX II2 GDc-IM2c)</b> (Included option code 0751)		<b>Code 0078</b>
<b>Safety laminated glass in Triplex</b>		<b>Code 0751</b>
<b>Polycarbonate window</b>		<b>Code 0753</b>
<b>Oxygen application</b>		<b>Code 0765</b>
<b>Restrictor screw Ø 0.5</b>		<b>Code 0771</b>
<b>St. steel 1.4404 (AISI 316L)</b> <b>solid drawn Bourdon tube</b>		<b>Code 0816</b>
<b>Micro metric pointer (P ≥ 1.6 bar)</b>		<b>Code 0678</b>
<b>Friction pointer</b>		<b>Code 0679</b>
<b>Material certificate EN10204 3.1</b>		<b>Code Q1229</b>
<b>Calibration certificate EN837-1</b> (5 points raising and 5 points falling)		<b>Code Q1070</b>
<b>Lloyd's Register approval</b>		<b>Code 0827</b>



**Baumer**

## Dimensions



Type A (11)\*

Type D (10)\*

(\*according to EN837-1)

## Ordering details - MEP5 - MMN5

		Mxx 5xxxxxx			
<b>Model</b>	1' ... 3' digit				
All Stainless steel Pressure Gauge		MEP			
Pressure gauge with monel Bourdon tube (1)		MMN			
<b>Nominal size</b>	4' digit				
100 mm			5		
<b>Type of mounting</b>	5' digit				
<b>Stainless steel case and bezel ring 1.4301 (standard)</b>					
Bottom connection, 3 back lugs fixing				A	
Bottom connection				D	
<b>Stainless steel case and bezel ring 1.4404 (AISI 316L)</b>					
Bottom connection, 3 back lugs fixing				1	
Bottom connection				4	
<b>Process connection</b>	6' digit				
G1/4					2
G1/2					3
1/4NPT					5
1/2NPT					6
M20x1.50					9
<b>Liquid filling</b>	7' digit				
Dry					0
BH1 (glycerin/water) (-20 ... +70°C)					1
BH2 (glycerin) (+10 ... +90°C) (except 0.6 bar)					2
BH3 (silicone) (-40 ... +100°C)					3
BH5 (oxygen 160 bar max) (-15 ... +100°C)					5
<b>Unit of measurement</b>	8' digit				
bar					B
kPa					D
kg/cm <sup>2</sup>					F
psi					H
<b>Pressure ranges</b>	9' ... 10' digit				
See table					xx

code	bar	kPa	code	Psi
58	-0.6 + 0	-60 + 0	58	
59	-1 + 0	-100 + 0	59	-30"Hg+ 0
72	-1 + 0.6	-100 + 60	73	-30"Hg+ 15
74	-1 + 1.5	-100 + 150	75	-30"Hg+ 30
76	-1 + 3	-100 + 300	2C	-30"Hg+ 60
77	-1 + 5	-100 + 500	78	-30"Hg+ 100
79	-1 + 9	-100 + 900	79	-30"Hg+ 150
81	-1 + 15	-100 + 1500	81	-30"Hg+ 220
82	-1 + 24	-100 + 2400	82	-30"Hg+ 300
12	0 + 0.6	0 + 60	13	0 + 10
15	0 + 1	0 + 100	15	0 + 15
16	0 + 1.6	0 + 160	1C	0 + 20
18	0 + 2.5	0 + 250	17	0 + 30
19	0 + 4	0 + 400	19	0 + 60
20	0 + 6	0 + 600	21	0 + 100
22	0 + 10	0 + 1000	22	0 + 160
24	0 + 16	0 + 1600	23	0 + 200
26	0 + 25	0 + 2500	25	0 + 300
27	0 + 40	0 + 4000	26	0 + 400
29	0 + 60	0 + 6000	27	0 + 600
31	0 + 100	0 + 10000	30	0 + 1000
33	0 + 160	0 + 16000	31	0 + 1500
35	0 + 250	0 + 25000	34	0 + 3000
38	0 + 400	0 + 40000	38	0 + 6000
39	0 + 600	0 + 60000	40	0 + 10000
41	0 + 1000	0 + 100000	41	0 + 15000
42	0 + 1600	0 + 160000	1D	0 + 20000

(1) Monel version (MMN) is not available in codes 58, 41, 42, 1D

( ▶ Standard version)