

MPG6-MPJ6-MPE6-MPF6 Safety gauges "turrett"

Polypropylene case (MPG, MPJ)

Phenolic case resin (MPE, MPF)

Can be used in corrosive gases and liquids that are not crystallizing

Accuracy Class 0.5 (Grade 2A)

Bourdon tube stainless steel (MPG, MPE) or monel (MPJ, MPF)

Without or with dampening fluid

Unit of measurement in bar, psi, kg/cm², kPa

These gauges have been designed to fulfil requirements of the process industries (petrochemical, biochemical and power).

With safety in mind, they have been developed with solid front and blow-out back which will immediately release in the event of accidental tube rupture.

Watertight and fillable with dampening liquid, the gauge design includes a special compensation diaphragm which maintains accuracy by equalizing internal and atmospheric pressures.



Specifications (20°C)

Nominal size	130 mm
Measurement range	MPG-MPE : -1 ... 0 to 0 ... 1600 bar MPJ-MPF : -1 ... 0 to 0 ... 600 bar
Working pressure (-1 ≤ P ≤ 600 bar)	Steady: 100% FS Fluctuating: 90% FS Short time: 130% FS
(P ≥ 1000 bar)	Steady: 75% FS Fluctuating: 60% FS Short time: 100% FS
Accuracy class	0.5 (AISI B40 Grade 2A)
Protection rating	IP 67 (EN 60529)
Process connection	
Type	G1/2, 1/2 NPT
Material	MPG-MPE : St. steel 1.4404 (AISI 316L) MPJ-MPF : Monel 400
Case	UL 94 VO MPG-MPJ : Polypropylene MPE-MPF : Phenolic
Bezel ring	UL 94 VO MPG-MPJ : Polypropylene MPE-MPF : Phenolic
Bourdon tube	MPG-MPE : St. steel 1.4404 (AISI 316L) MPJ-MPF : Monel 400
Movement	St. steel
Window	Plexiglas (Polymethylmethacrylate)
Window gasket	Elastomer
Dial	Aluminium
Pointer	Aluminium. Micrometer (P ≥ 1.6 bar)
Temperature	Ambient -20...+70°C Process -40 ... +200 °C (not filled) Process -20 ... +70 °C (filled BH1) (The gauge temperature does not exceed +70°C) Storage -40...+70°C Drift ± 0,4% FS/10°C
Safety	S3 Safety pressure gauge with baffle wall and blow-out back

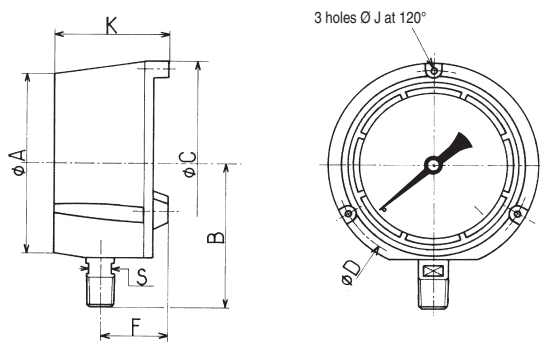
Options	
Safety laminated glass in Triplex	Code 0751
Oxygen application	Code 0765
Restrictor screw Ø 0.5	Code 0771
St. steel 1.4404 (AISI 316L) solid drawn Bourdon tube (MPG6-MPE6)	Code 0816
Material analysis certificate EN10204 3.1	Code Q1229
Calibration certificate EN837-1 (5 points raising and 5 points falling)	Code Q1070



Baumer

Dimensions - Types of mounting

Type A (11)** and Type D (10)**



(** according to EN837-1)

Sizes : MPG / MPJ

NS	130	4"1/2
A	129	5"5/64
B	102	4"1/64
C	148	5"53/64
D	137	5"25/64
F*	38	1"1/2
J	5.6	7/32
K*	43	2"7/8
S	15.9	5/8

* Optional : Phenol case

MPE / MPF

NS	130	4"1/2
F*	42.5	1"43/64
K*	79	3"7/64

Weight (kg)		
Not filled	MPE/MPF	MPG/MPJ
	0.90	0.68
Filled	1.50	1.30

Ordering Details - MPG6-MPJ6-MPE6-MPF6

		MPx6xxxxxx	
Model	1' digit		
Pressure gauges		M	
Type	2'...3' digit		
Polypropylene/St. steel		PG	
Polypropylene/Monel (1)		PJ	
Phenolic/St. steel		PE	
Phenolic/Monel (1)		PF	
Nominal size	4' digit		
130 mm (4"1/2)		6	
Type of mounting	5' digit		
bottom connection, back flange		▶	A
bottom connection		▶	D
Process connection	6' digit		
G1/2		▶	3
1/2 NPT		▶	6
Liquid filling	7' digit		
Dry			0
BH1 (glycerin/water) (-20 ... +70°C)			1
BH2 (glycerin) (+10 ... +90°C) ⁽¹⁾		▶	2
BH3 (silicone) (-40 ... +100°C)			3
BH4 (silicone) (-60 ... +100°C)			4
BH5 (oxygen 160 bar max.) (-15 ... +100°C)			5
BH7 (suitable for refrigerants) (-35 ... +100°C)			7
Unit of measurement	8' digit		
bar		▶	B
kPa		▶	D
kg/cm ²			F
psi		▶	H
Pressure range	9'...10' digit		
See table			xx

(▶ Standard version)

code	Bar	code	Psi
59	-1 + 0	59	-30"Hg + 0
72	-1 + 0.6	73	-30"Hg + 15
74	-1 + 1.5	75	-30"Hg + 30
76	-1 + 3	2C	-30"Hg + 60
77	-1 + 5	78	-30"Hg + 100
79	-1 + 9	79	-30"Hg + 150
81	-1 + 15	80	-30"Hg + 200
82	-1 + 24	82	-30"Hg + 300
12	0 + 0.6	13	0 + 10
15	0 + 1	15	0 + 15
16	0 + 1.6	1C	0 + 20
18	0 + 2.5	17	0 + 30
19	0 + 4	19	0 + 60
20	0 + 6	21	0 + 100
22	0 + 10	22	0 + 160
24	0 + 16	23	0 + 200
26	0 + 25	25	0 + 300
27	0 + 40	26	0 + 400
29	0 + 60	27	0 + 600
31	0 + 100	30	0 + 1000
33	0 + 160	31	0 + 1500
35	0 + 250	34	0 + 3000
38	0 + 400	38	0 + 6000
39	0 + 600	40	0 + 10000
41	0 + 1000	41	0 + 15000
42	0 + 1600	1D	0 + 20000

(1) Monel version MPJ and MPF are not available in codes 41, 42 and 1D

Accuracy class

		Liquid filling		
		Dry	BHx	BH2
P	0.6	1A	B	X
	1	2A	1A	1A
	> 1	2A	2A	2A

EN2012-02-24 This data sheet may only be reproduced in full