

MTA5 - MTX5 Industrial capsule pressure gauges

Ø 100 mm

Low pressure measurements

Class 1.6

Standard version: MTA5

Stainless steel version: MTX5

Pressure range from - 600...0 mbar to 0...600 mbar

Conforms to European standard EN 837-3



The pressure gauges of the MTA5 and MTX5 series are well suited for low pressure measurements. Their sensing element is a capsule made of 2 stainless steel laser-welded diaphragms.

The MTA5 is to be used on clean, non corrosive gases.

The MTX5 is dedicated to pressure measurements on corrosive gases in a harsh environment.

Specifications (20°C)

Ranges	From - 100...0 to 0...600 mbar.
Working pressure	Steady: 75% of full scale value Fluctuating: 60% of full scale value Short time: 100% of full scale value
Standard accuracy	± 1.6 % of full scale. (classe 2,5 for 16 mbar)
Standard degree of protection EN60529	IP 33 - Mounting types A and D. IP 44 - Mounting types B and F.
Gauge working Temperature	- 20° ... 60°C
Thermal drift	Additional error when temperature of the pressure element deviates from 20°C (68°F) ±0.4% for every 10°C (50°F) rising or falling. Percentage of span.)
Sensing element	Stainless steel capsule 1.4404 (AISI 316 L) made of 2 laser-welded diaphragms. Screwed to connection.
Hydraulic connection	G 1/2 or 1/2 NPT (with across flats 23 mm). MTA5: brass MTX5: stainless steel (Z2 CND 17.12)
Case	Stamped sheet and bright stainless steel (1.4301/AISI 304).
Window	Polycarbonate - snap fit into case.
Dial	Aluminium alloy, painted white, black graduations on white background.
Pointer	Aluminium painted black.
Movement	Brass.
Front flange type B	black ABS
Zero reset	Accessible on the dial. For errors which do not exceed 10 % of scale range, the zero screw is located on the dial.

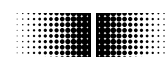
options

Special graduations

Special threads smaller than or equal to G 1/2 or 1/2 NPT **Please consult us.**

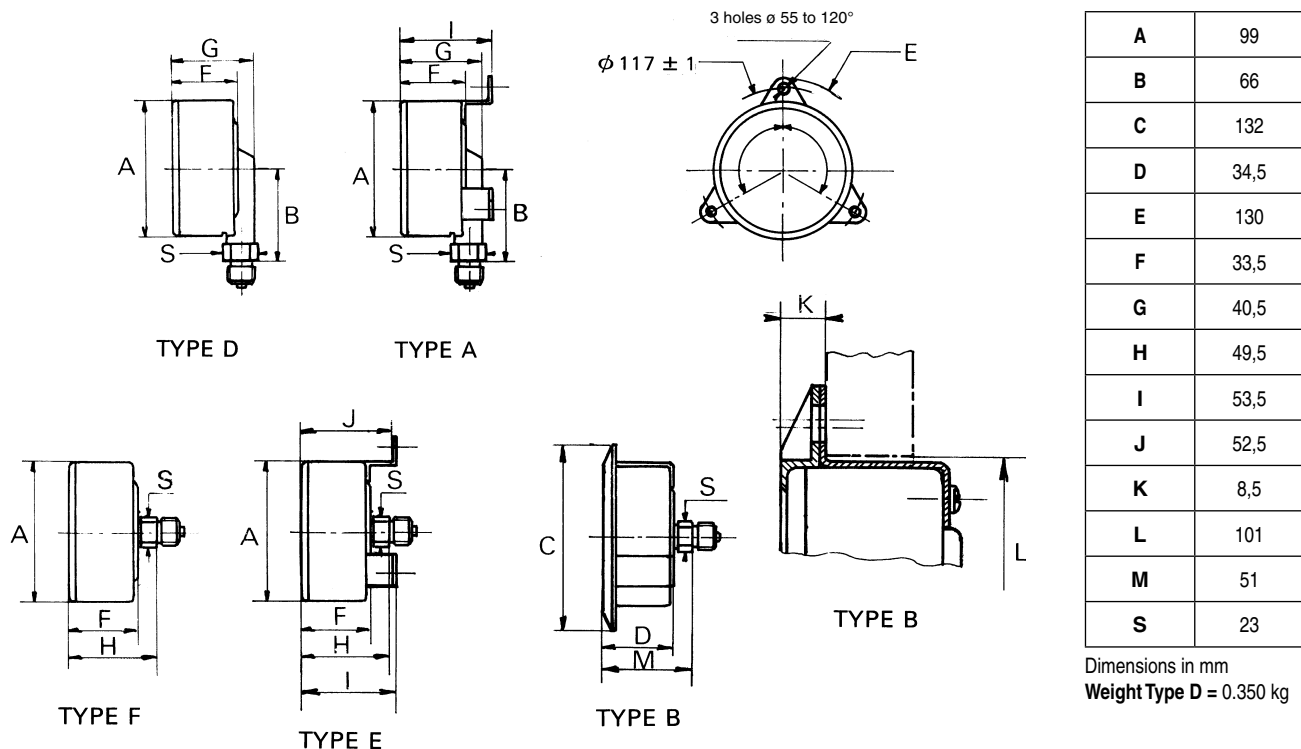
Oxygen application. **Code 0765**

Restrictor screw. **Code 0771**



Baumer

Dimensions - Types of mounting



Codification - MTA5

MTx5xx0xxx	
Family Pressure gauges	1' digit M
Type MTX MTA	2'...3' digit TX TA
Dial diameter Ø 100 mm	4' digit 5
Type of mounting and connector position bottom connection, 3 back lugs back connection, front flange bottom connection back connection, 3 back lugs back connection	5' digit A B D E F
Hydraulic connection G 1/2 1/2 NPT	6' digit 3 6
Type of liquid filling Without filling	7' digit 0
Pressure range See codes in table	8'...10' digit xxx

Unit of measurement ranges :
N : mbar

code	Ø 100	Ranges mbar
N50	*	-16 + 0
N51	X	-25 + 0
N52	X	-40 + 0
N53	X	-60 + 0
N54	X	-100 + 0
N55	X	-160 + 0
N56	X	-250 + 0
N57	X	-400 + 0
N58	X	-600 + 0
N04	*	0 + 16
N05	X	0 + 25
N06	X	0 + 40
N07	X	0 + 60
N08	X	0 + 100
N09	X	0 + 160
N10	X	0 + 250
N11	X	0 + 400
N12	X	0 + 600
N61	*	-6 + 10
N62	X	-10 + 16
N63	X	-16 + 25
N64	X	-25 + 40
N65	X	-40 + 60
N66	X	-60 + 100
N67	X	-100 + 160
N68	X	-160 + 250
N69	X	-250 + 400

Symbol	Graduated over	Accuracy %
x	270°	± 1.6
*	180°	± 2.5

UK12-2008 This data sheet may only be reproduced in full