

Incremental encoders

Shaft with clamping flange, stainless steel housing

Resolution 5...6000 pulses

GE355



GE355 with clamping flange

Features

- Encoder with clamping flange
- Stainless steel design
- Optical sensing
- Resolution max. 6000 ppr
- Clamping flange with shaft \varnothing 10 mm

Technical data - electrical ratings

Voltage supply	5 VDC \pm 10 % 4.75...30 VDC
Reverse polarity protection	Yes (4.75...30 VDC)
Consumption w/o load	\leq 30 mA (24 VDC) \leq 60 mA (5 VDC)
Resolution (steps/turn)	5...6000
Reference signal	Zero pulse, width 90°
Sensing method	Optical
Output frequency	\leq 150 kHz
Output signals	A 90° B, N + inverted
Output circuit	Linedriver/RS422 Push-pull short-circuit proof
Interference immunity	DIN EN 61000-6-2
Emitted interference	DIN EN 61000-6-4
Approval	UL approval / E63076

Technical data - mechanical design

Dimensions (flange)	\varnothing 58 mm
Shaft	\varnothing 10 mm (clamping flange)
Shaft loading	\leq 20 N axial \leq 40 N radial
Flange	Clamping flange
Protection DIN EN 60529	IP 67
Operating speed	\leq 10000 rpm
Starting torque	\leq 0.03 Nm (IP 67)
Rotor moment of inertia	14.5 gcm ²
Materials	Housing: stainless steel 1.4305 Flange: stainless steel 1.4305
Operating temperature	-25...+85 °C
Relative humidity	95 % non-condensing
Resistance	DIN EN 60068-2-6 Vibration 10 g, 16-2000 Hz DIN EN 60068-2-27 Shock 200 g, 6 ms
Connection	Cable 1 m Cable 1.5 m
Weight approx.	500 g

Incremental encoders

Shaft with clamping flange, stainless steel housing

Resolution 5..6000 pulses

GE355

Part number

GE355. A

- |
- |
- | See part number (pulses)
- | Connection
- | 31 Cable 1 m, axial
- | 4A Cable 1.5 m, radial
- | Voltage supply / signals
- | 22 5 VDC / linedriver RS422
- | 70 4.75...30 VDC / push-pull
- | 72 4.75...30 VDC / linedriver RS422 (5 VDC)
- | Flange / Shaft
- | A Clamping flange / ø10 mm IP 67

Part number (pulses)

49 (5)	57 (128)	22 (1000)	30 (2500)
36 (10)	06 (200)	23 (1024)	31 (3600)
50 (25)	09 (250)	24 (1250)	34 (4096)
39 (50)	13 (360)	26 (1500)	35 (5000)
40 (60)	14 (400)	28 (2000)	48 (6000)
41 (100)	15 (500)	29 (2048)	

Other pulse numbers upon request.
 Example: order key 23 = 1024 pulses.

Incremental encoders

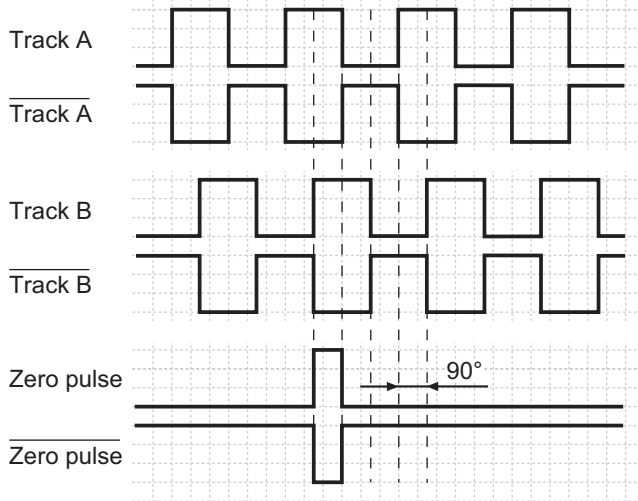
Shaft with clamping flange, stainless steel housing

Resolution 5...6000 pulses

GE355

Output signals

Clockwise rotating direction when looking at flange.



Terminal assignment

Core colour	Assignment
pink	Track B inv.
blue	UB-Sense
red	Track N (zero pulse)
black	Track N inv. (zero pulse inv.)
brown	Track A
green	Track A inv.
–	–
grey	Track B
–	–
white/green	GND
white	GND-Sense
brown/green	UB

UB-Sense and GND-Sense are directly connected to UB resp. GND.

Please use cores twisted in pairs (for example track A / track A inv.) for extension cables of more than 10 m length

Trigger level

Outputs	Linedriver RS422
Output level High	>2.5 V (I = -20 mA)
Output level Low	<0.5 V (I = 20 mA)
Load High	<20 mA
Load Low	<20 mA

Outputs	Push-pull short-circuit proof
Output level High	>UB -3 V (I = -20 mA)
Output level Low	<0.5 V (I = 20 mA)
Load High	<20 mA
Load Low	<20 mA

Incremental encoders

Shaft with clamping flange, stainless steel housing
Resolution 5..6000 pulses

GE355

Dimensions

