

Absolute encoders - modular bus covers

Hollow shaft, stainless steel housing

Optical multiturn encoders 13 bit ST / 16 bit MT

CANopen / DeviceNet / Profibus

GEMMH - *multivo*



GEMMH with modular bus cover

Features

- Encoder multiturn / bus cover
- Stainless steel design
- Optical sensing
- Resolution: singleturn 13 bit, multiturn 16 bit
- Hollow shaft max. \varnothing 14 mm
- CANopen, DeviceNet, Profibus-DP
- High reliability by self-diagnostics
- Encoder for optional parameterization

Technical data - electrical ratings

Voltage supply	10...30 VDC
Reverse polarity protection	Yes
Consumption w/o load	\leq 100 mA (24 VDC)
Initializing time (typ.)	250 ms after power on
Interfaces	CANopen, DeviceNet, Profibus-DPV0
Function	Multiturn
User address	Rotary switch in bus cover
Steps per turn	\leq 8192 / 13 bit
Number of turns	\leq 65536 / 16 bit
Absolute accuracy	\pm 0.025 °
Sensing method	Optical
Code	Binary
Code sequence	CW/CCW programmable
Interference immunity	DIN EN 61000-6-2
Emitted interference	DIN EN 61000-6-4
Programmable parameters	Steps per revolution Number of revolutions Preset Scaling Rotational direction
Diagnostic functions	Position or parameter error Multiturn sensing
Status indicator	DUO-LED integrated in bus cover
Approval	UL approval / E63076

Technical data - mechanical design

Dimensions (flange)	\varnothing 58 mm
Shaft	\varnothing 12 mm hollow shaft \varnothing 14 mm hollow shaft
Protection DIN EN 60529	IP 64
Operating speed	\leq 6000 rpm (mechanical) \leq 6000 rpm (electric)
Rotor moment of inertia	20 gcm ²
Materials	Housing: stainless steel 1.4305 Flange: stainless steel 1.4305 Bus cover: stainless steel 1.4305
Operating temperature	-25...+85 °C -40...+85 °C (optional)
Relative humidity	95 % non-condensing
Resistance	DIN EN 60068-2-6 Vibration 10 g, 16-2000 Hz DIN EN 60068-2-27 Shock 200 g, 6 ms
Weight approx.	1500 g
Connection	Bus cover

Absolute encoders - modular bus covers

Hollow shaft, stainless steel housing

Optical multiturn encoders 13 bit ST / 16 bit MT

CANopen / DeviceNet / Profibus

GEMMH - *multivo*

Part number

GEMMH.

	20	
--	----	--

Interface

3P32 Profibus-DPV0 / cable gland
5P32 CANopen / cable gland
8P22 DeviceNet / cable gland

Hollow shaft

P Hollow shaft ø12 mm without pin
N Hollow shaft ø12 mm with pin 15 mm
R Hollow shaft ø14 mm without pin
Q Hollow shaft ø14 mm with pin 15 mm
2 Hollow shaft ø14 mm with pin 23.5 mm
3 Hollow shaft ø12 mm with pin 23.5 mm

CD with file descriptions is not included in the delivery. You may order them on CD as accessory free-of-charge.

Accessories

Mounting accessories

Z 119.041	Torque support by rubber buffer element for encoders with 15 mm pin
Z 119.050	Spring coupling
Z 119.053	Spring coupling height 19.1 mm
Z 119.072	Spring coupling for encoders with ø58 mm housing, hole distance 73 mm
Z 119.073	Spring coupling for encoders with ø58 mm housing, hole distance 68 mm
Z 119.076	Spring coupling for encoders with ø58 mm housing
Z 119.082	Spring coupling for encoders with ø58 mm housing, hole distance 63 mm

Programming accessories

Z 150.022	CD with describing files & manuals
-----------	------------------------------------

Absolute encoders - modular bus covers

Hollow shaft, stainless steel housing

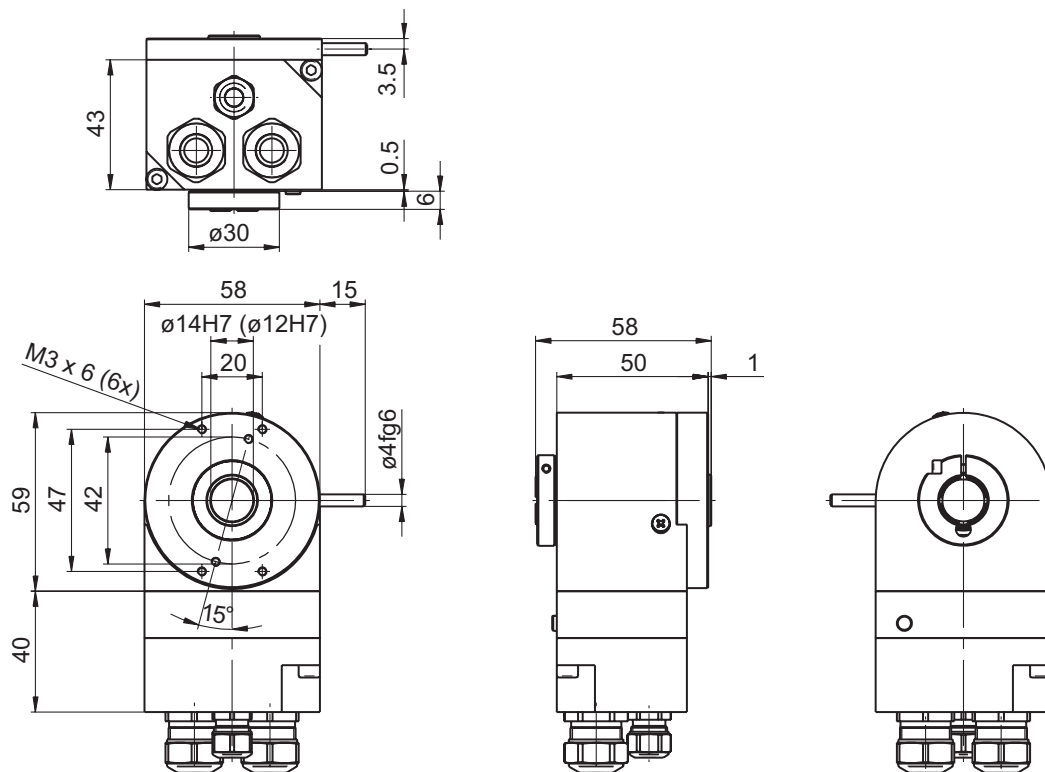
Optical multiturn encoders 13 bit ST / 16 bit MT

CANopen / DeviceNet / Profibus

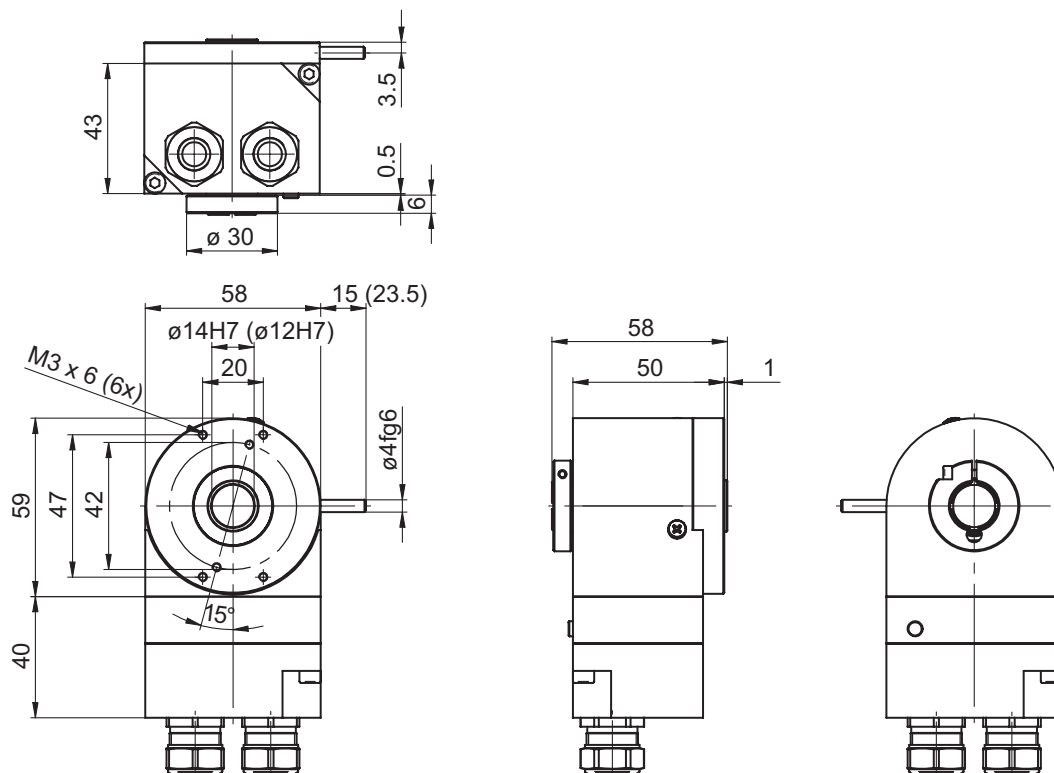
GEMMH - *multivo*

Dimensions

GEMMH - CANopen, Profibus-DP



GEMMH - DeviceNet



Absolute encoders - modular bus covers

Hollow shaft, stainless steel housing

Optical multiturn encoders 13 bit ST / 16 bit MT

CANopen / DeviceNet / Profibus

GEMMH - *multivo*
