

# Incremental encoders

## Shaft $\varnothing 10$ mm with clamping flange

### Resolution 50...1024 pulses

#### ITD 20 B14 Y 9



ITD 20 B14 Y 9 with clamping flange

#### Technical data - electrical ratings

Voltage supply	5 VDC $\pm 5$ % 8...30 VDC
Reverse polarity protection	Yes
Consumption w/o load	$\leq 100$ mA
Resolution (steps/turn)	50...1024
Reference signal	Zero pulse, width $90^\circ$
Sensing method	Optical
Output frequency	$\leq 120$ kHz
Output signals	A, B, N + inverted
Output circuit	TTL linedriver (short-circuit proof) HTL push-pull (short-circuit proof)
Interference immunity	DIN EN 61000-6-2
Emitted interference	DIN EN 55011

#### Features

- Encoder with shaft  $\varnothing 10$  mm
- Resolution max. 1024 ppr
- Optical sensing
- Centering alignment  $\varnothing 36$  mm, mounting screw hole circle  $\varnothing 48$  mm
- Industrial standard
- TTL or HTL output signals
- Cable output radial or axial

#### Optional

- Cable with connector
- Extended operating temperature range

#### Technical data - mechanical design

Dimensions (flange)	$\varnothing 58$ mm
Shaft	$\varnothing 10$ mm (clamping flange)
Shaft loading	$\leq 40$ N axial $\leq 60$ N radial
Flange	Clamping flange
Protection DIN EN 60529	IP 65
Operating speed	$\leq 12000$ rpm
Starting torque	$\leq 0.01$ Nm
Materials	Housing: aluminium, black, powder-coated Shaft: stainless steel
Operating temperature	$-20 \dots +70$ °C $-20 \dots +100$ °C
Relative humidity	90 % non-condensing
Resistance	DIN EN 60068-2-6 Vibration 10 g, 55-2000 Hz DIN EN 60068-2-27 Shock 100 g, 11 ms
Connection	Cable 1 m
Weight approx.	340 g



# Incremental encoders

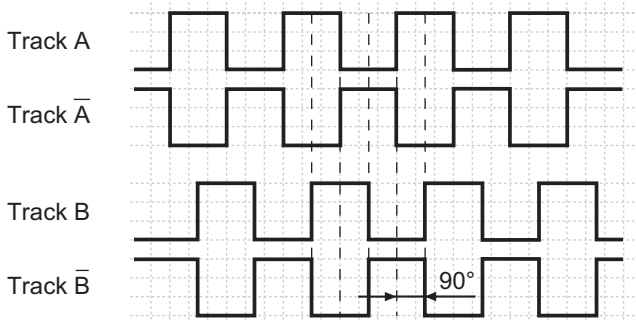
Shaft  $\varnothing 10$  mm with clamping flange  
Resolution 50...1024 pulses

## ITD 20 B14 Y 9

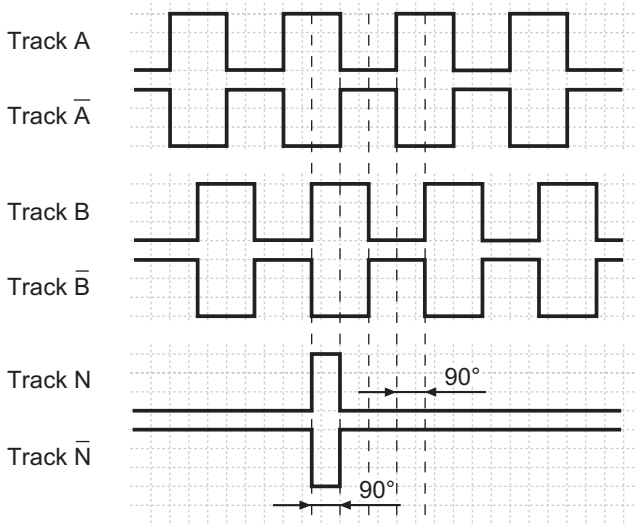
### Output signals

Clockwise rotation when looking at the mounting side.

#### BI-Output signals



#### NI-Output signals



### Terminal assignment

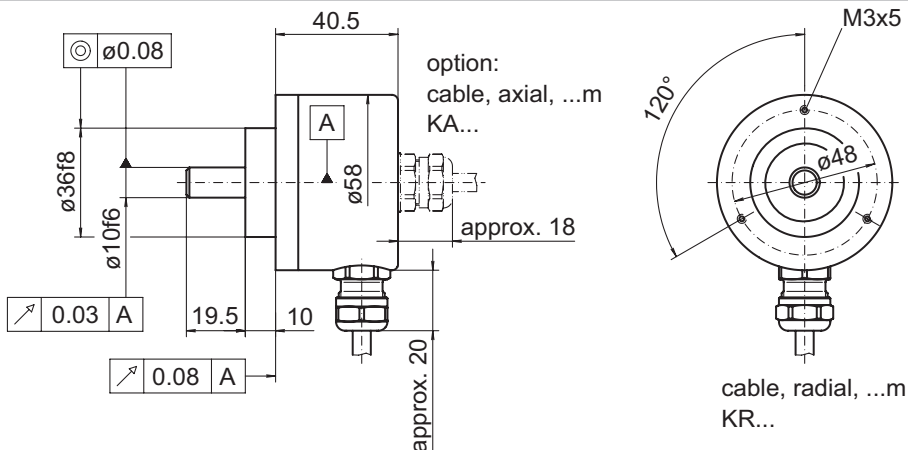
Core colour	Assignment
brown	Track A
green	Track A inv.
grey	Track B
pink	Track B inv.
red	Track N
black	Track N inv.
brown 0,5 mm <sup>2</sup>	UB
white 0,5 mm <sup>2</sup>	GND
blue	UB-Sense
white	GND-Sense
transparent	Shield/Housing

### Trigger level

Outputs	Linedriver
Output level High	$\geq 2.4$ V
Output level Low	$\leq 0.5$ V
Load	$\leq 70$ mA

Outputs	Push-pull short-circuit proof
Output level High	$\geq UB - 3$ V
Output level Low	$\leq 1.5$ V
Load	$\leq 70$ mA

### Dimensions



027- 4 Y 9

**Incremental encoders**  
Shaft  $\varnothing$ 10 mm with clamping flange  
Resolution 50...1024 pulses

---

**ITD 20 B14 Y 9**