

# Incremental encoders

End shaft  $\varnothing 12$  mm and  $\varnothing 14$  mm

Resolution 64...2048 pulses

## HOG 71



HOG 71

### Features

- Encoder with end shaft  $\varnothing 12$ -14 mm
- Optical sensing
- Compact, robust die-cast housing
- Inside connecting terminals
- Logic level TTL or HTL
- Logic level TTL with regulator UB 9...26 VDC
- High resistance to shock and vibrations
- High protection IP 66

### Technical data - electrical ratings

Voltage supply	5 VDC $\pm 5$ % 9...26 VDC
Consumption w/o load	$\leq 100$ mA
Resolution (steps/turn)	64...2048
Phase shift	$90^\circ \pm 20^\circ$
Scan ratio	40...60 %
Reference signal	Zero pulse, width $90^\circ$
Sensing method	Optical
Output frequency	$\leq 120$ kHz
Output signals	A, B, C + inverted
Output circuit	Linedriver/RS422 Push-pull short-circuit proof
Interference immunity	DIN EN 61000-6-2
Emitted interference	DIN EN 61000-6-4
Approval	UL approval / E256710

### Technical data - mechanical design

Dimensions (flange)	$\varnothing 60$ mm
Shaft	$\varnothing 12$ ...14 mm end shaft
Shaft loading	$\leq 30$ N axial $\leq 40$ N radial
Protection DIN EN 60529	IP 66
Operating speed	$\leq 10000$ rpm (mechanical)
Operating torque typ.	1 Ncm
Rotor moment of inertia	55 gcm <sup>2</sup>
Materials	Housing: aluminium die-cast Shaft: stainless steel
Operating temperature	-20...+85 °C
Resistance	IEC 60068-2-6 Vibration 10 g, 10-2000 Hz IEC 60068-2-27 Shock 100 g, 6 ms
Explosion protection	II3G Ex nA IIC T4 Gc X (gas) II3D Ex tc IIIC T85°C Dc X (dust)
Connection	Connecting terminal
Weight approx.	240 g

# Incremental encoders

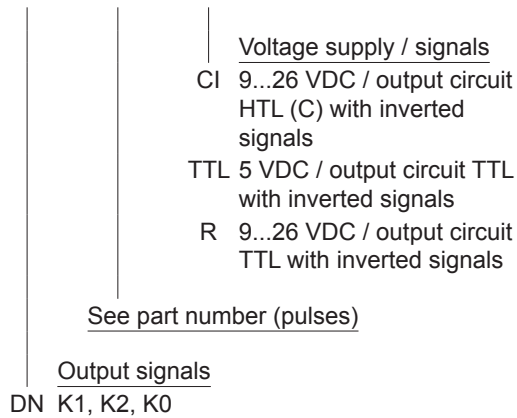
End shaft  $\varnothing 12$  mm and  $\varnothing 14$  mm  
Resolution 64...2048 pulses

HOG 71

## Part number

HOG 71 

DN				
----	--	--	--	--



## Accessories

### Connectors and cables

HEK 8 Sensor cable for encoders

### Diagnostic accessories

HENQ 1100 Analyzer for encoders

## Part number (pulses)

64	192	360	512	1024
100	200	400	720	2048
180	256	500	1000	

Other pulse numbers upon request.

# Incremental encoders

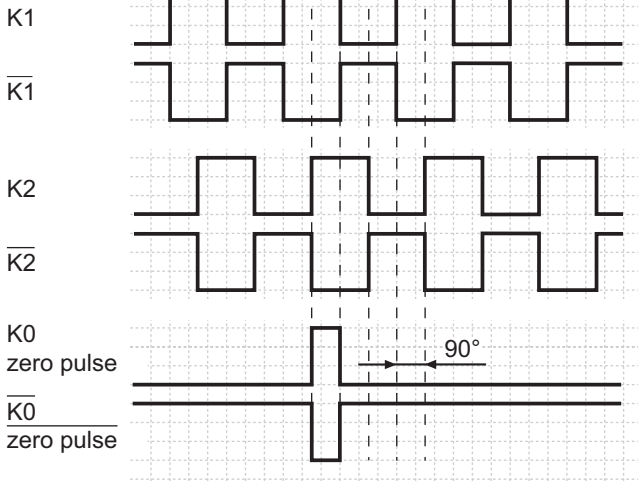
End shaft  $\varnothing 12$  mm and  $\varnothing 14$  mm

Resolution 64...2048 pulses

## HOG 71

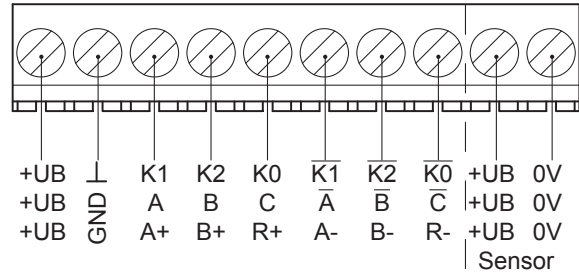
### Output signals

at positive rotating direction

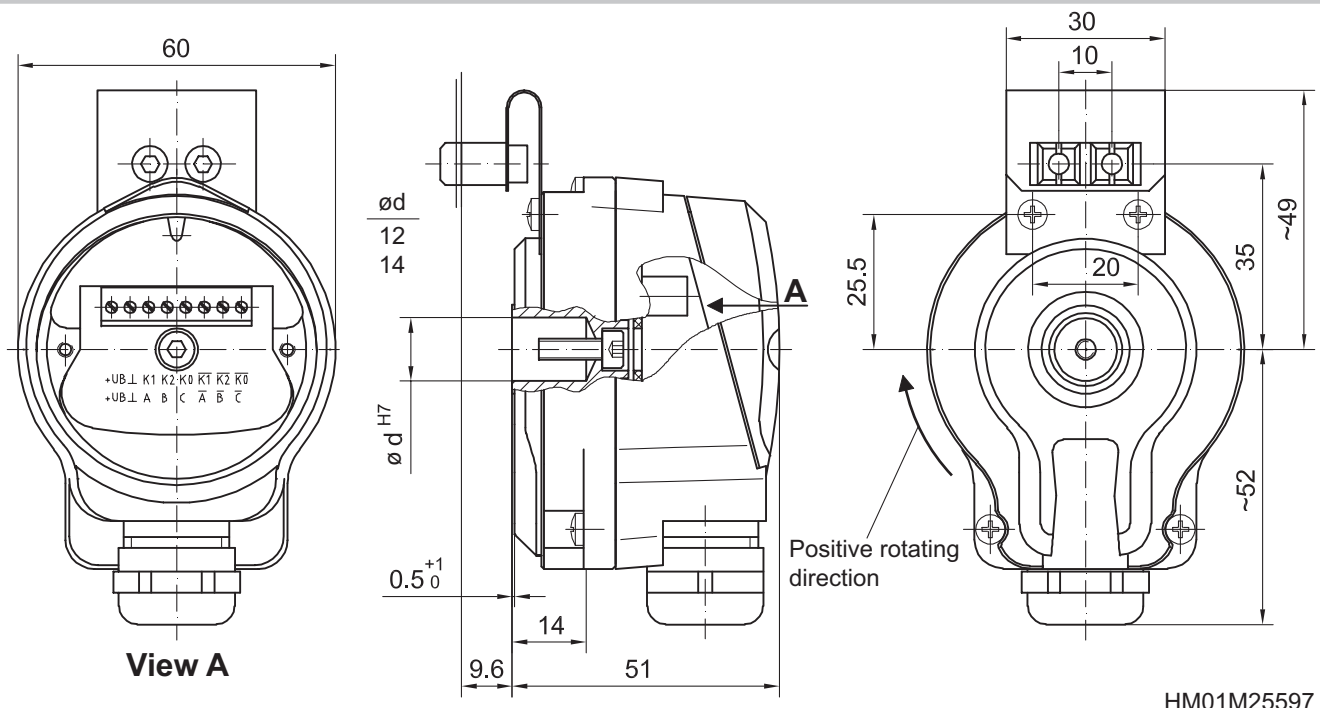


### Terminal assignment

View A - Connecting terminal inside the encoder



### Dimensions



HM01M25597

**Incremental encoders**  
End shaft  $\varnothing$ 12 mm and  $\varnothing$ 14 mm  
Resolution 64...2048 pulses

---

**HOG 71**