

Incremental encoders

Hollow shaft max. \varnothing 12 mm

Resolution 6000...80000 pulses

G0333



G0333 with hollow shaft

Features

- Encoder with hollow shaft \varnothing 12 mm
- Optical sensing
- Resolution max. 80000 ppr
- Clamping ring on housing

Technical data - electrical ratings

Voltage supply	5 VDC \pm 10 % 4.75...30 VDC
Reverse polarity protection	Yes (4.75...30 VDC)
Consumption w/o load	\leq 30 mA (24 VDC) \leq 60 mA (5 VDC)
Resolution (steps/turn)	6000...80000
Reference signal	Zero pulse, width 90°
Sensing method	Optical
Output frequency	\leq 300 kHz
Output signals	A 90° B, N + inverted
Output circuit	Linedriver/RS422 Push-pull short-circuit proof
Interference immunity	DIN EN 61000-6-2
Emitted interference	DIN EN 61000-6-4
Approval	UL approval / E63076

Technical data - mechanical design

Dimensions (flange)	\varnothing 58 mm
Shaft	\varnothing 12 mm hollow shaft
Protection DIN EN 60529	IP 54
Operating speed	\leq 6000 rpm
Starting torque	\leq 0.03 Nm (IP 54)
Rotor moment of inertia	14.5 gcm ²
Materials	Housing: aluminium Flange: aluminium
Operating temperature	-25...+85 °C -40...+85 °C (optional)
Relative humidity	95 % non-condensing
Resistance	DIN EN 60068-2-6 Vibration 10 g, 16-2000 Hz DIN EN 60068-2-27 Shock 200 g, 6 ms
Connection	Connector M23, 12-pin
Weight approx.	250 g

Incremental encoders

Hollow shaft max. \varnothing 12 mm

Resolution 6000...80000 pulses

G0333

Part number

Hollow shaft with clamping ring

G0333. C3

See part number (pulses)

Connection

C3 Connector M23, 12-pin, radial

Voltage supply / signals

25 5 VDC / linedriver RS422

75 4.75...30 VDC / push-pull

77 4.75...30 VDC / linedriver
RS422 (5 VDC)

Hollow shaft / torque pin

0 Hollow shaft \varnothing 12 mm clamping ring on housing with pin 15 mm, IP 54

1 Hollow shaft \varnothing 12 mm clamping ring on housing with pin 9.5 mm, IP 54

A Hollow shaft \varnothing 12 mm clamping ring on housing without pin, IP 54

Part number (pulses)

70 (8192)	73 (10000)	72 (20000)	75 (48000)
74 (9000)	71 (16384)	77 (36000)	76 (80000)

Other pulse numbers upon request.

Example: order key 70 = 8192 pulses.

Accessories

Connectors and cables

Z 141.001 Female connector M23, 12-pin, less cable

Z 141.003 Female connector M23, 12-pin, 2 m cable

Z 141.005 Female connector M23, 12-pin, 5 m cable

Z 141.007 Female connector M23, 12-pin, 10 m cable

Mounting accessories

Z 119.023 Spring coupling for encoders with \varnothing 58 mm housing

Z 119.024 Torque support and spring washer for encoders with 9.5 mm pin

Z 119.041 Torque support by rubber buffer element for encoders with 15 mm pin

Incremental encoders

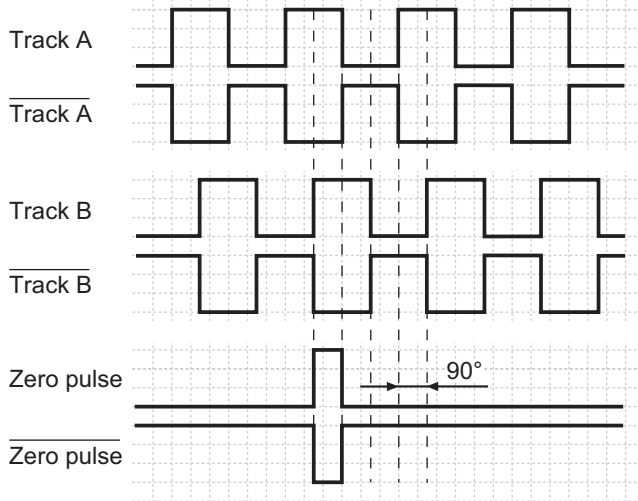
Hollow shaft max. $\varnothing 12$ mm

Resolution 6000...80000 pulses

G0333

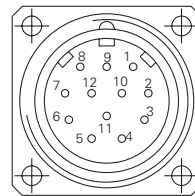
Output signals

Clockwise rotating direction when looking at flange.



Terminal assignment

Connector	Core colour	Assignment
Pin 1	pink	Track B inv.
Pin 2	blue	UB-Sense
Pin 3	red	Track N (zero pulse)
Pin 4	black	Track N inv. (zero pulse inv.)
Pin 5	brown	Track A
Pin 6	green	Track A inv.
Pin 7	–	–
Pin 8	grey	Track B
Pin 9	–	–
Pin 10	white/green	GND
Pin 11	white	GND-Sense
Pin 12	brown/green	UB



UB-Sense and GND-Sense are directly connected to UB resp. GND. Please use cores twisted in pairs (for example track A / track A inv.) for extension cables of more than 10 m length.

Trigger level

Outputs	Linedriver RS422
Output level High	>2.5 V (I = -20 mA)
Output level Low	<0.5 V (I = 20 mA)
Load High	<20 mA
Load Low	<20 mA

Outputs	Push-pull short-circuit proof
Output level High	>UB -3 V (I = -20 mA)
Output level Low	<0.5 V (I = 20 mA)
Load High	<20 mA
Load Low	<20 mA

Incremental encoders

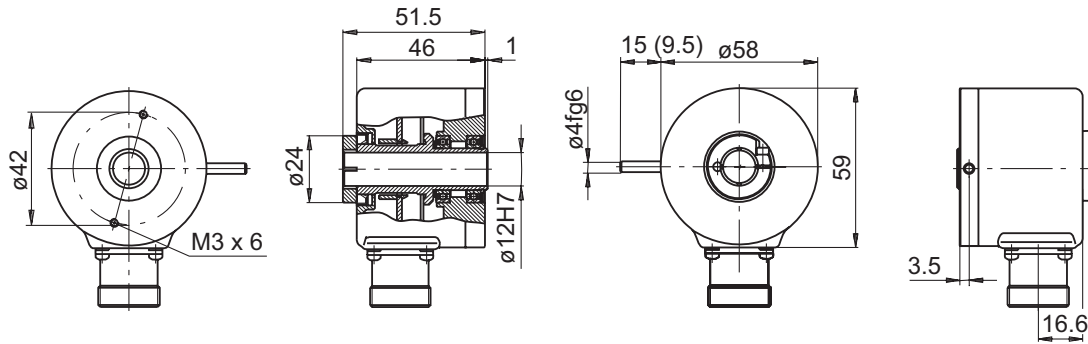
Hollow shaft max. $\varnothing 12$ mm

Resolution 6000...80000 pulses

G0333

Dimensions

G0333 - hollow shaft and clamping ring



Connector dimensions

