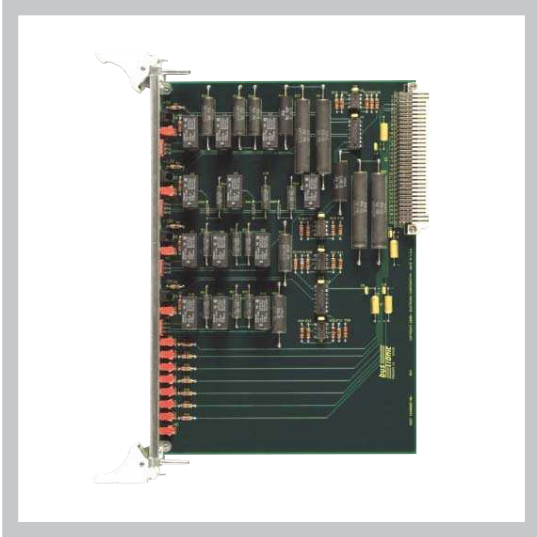


## VME/VME64x LOAD BOARD



### FEATURES

- Conforms to electrical and mechanical connections of ANSI/VITA 1, 1994 for VME and ANSI/VITA 1.1, 1997 for VME64 extensions
- Verifies chassis can meet power requirement and specifications for VME/VME64x
- Aids in locating hot spots in the chassis
- Visual GO-NO GO indicators for +5V, +3.3V, +12V, -12V
- Primary test points +V1, +V2, -V1, -V2, ACFAIL, SYSRESET, SYSFAIL, and GROUND
- Power supply loading varies with front panel switches

### BOARD SPECIFICATIONS

- 4-layer stripline design
- 2 oz. copper power and ground
- PCB UL recognized 94-V0
- PCB FR-4 or equivalent
- PCB .062" thick

### MECHANICAL SPECIFICATIONS

- 6U x 160mm

### DESCRIPTION

The Elma Bustronic VME/VME64x load board is designed to be compliant with ANSI/VITA mechanical and electrical connection standards.

Developed to enhance testing of VME systems, the load board aids the system designer in assuring adequate chassis cooling and verifying that the VME chassis is capable of meeting the power requirements of the system (or VITA specs).

Predominantly used by chassis manufacturers and system developers, the 6U VME/VME64x load board provides significant time and expense savings by assuring a system's operating specifications. The load board functions to test a system's cooling capabilities by first applying the load to the power supply for verification and finally creating the necessary heat to confirm chassis cooling. By locating hot spots in the chassis, a system designer can verify where to optimally redirect the airflow to prevent overheating. The load board increases productivity by quickly and accurately characterizing systems at low cost.

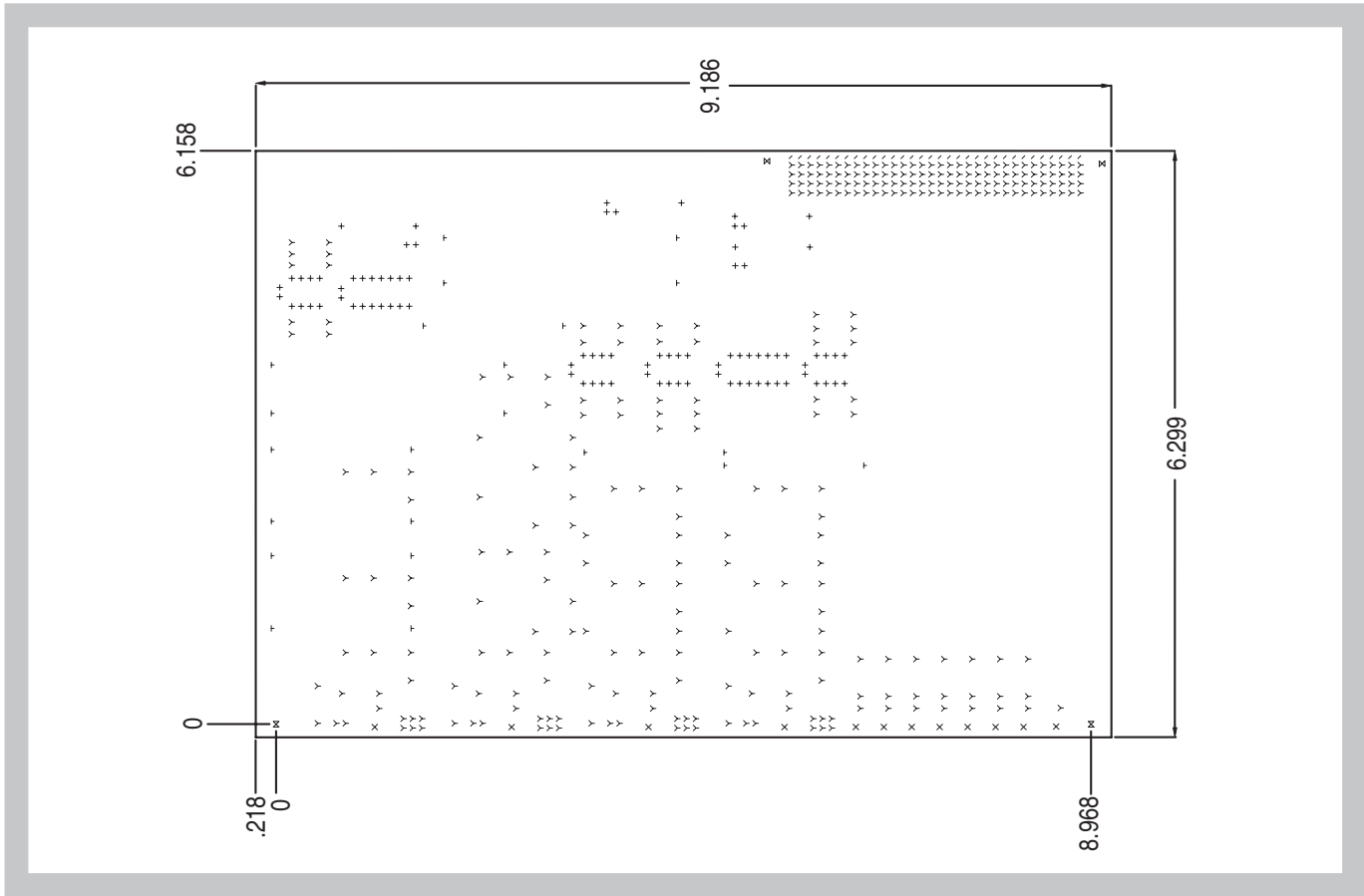
Other key performance characteristics of the 6U VME/VME64x load board include visual "GO-NO GO" indicators for each voltage (+V1, +V2, -V1, -V2) displaying that the voltage is within  $\pm 5$  percent of nominal. The other primary test points are ACFAIL, SYSRESET, SYSFAIL and GND. In addition, the load board offers power supply loading that utilizes binary switches to impose a load ranging from 0 to 7 amps of the primary load. This feature is also used for thermal characterization.

### TEST POINT CHART

Switch	+5V	+3.3V	+12V	-12V
000	off	off	off	off
001	1 A	1 A	0.1 A	0.1 A
010	2 A	2 A	0.2 A	0.2 A
011	3 A	3 A	0.3 A	0.3 A
100	4 A	4 A	0.4 A	0.4 A
101	5 A	5 A	0.5 A	0.5 A
110	6 A	6 A	0.6 A	0.6 A
111	7 A	7 A	0.7 A	0.7 A

# VME/VME64x LOAD BOARD

## LINE DRAWING



## ORDER INFORMATION

Height	Length	Part Number
6U	160mm	80-616-V645X-0000