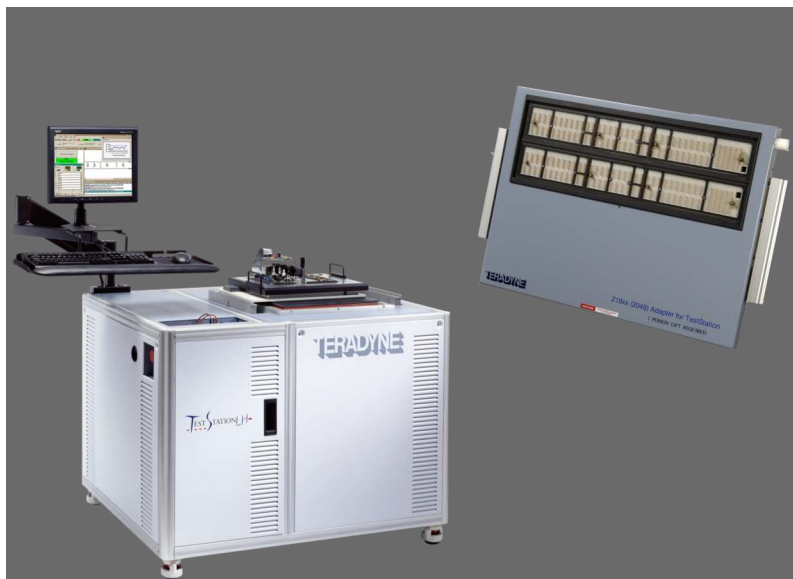


TestStation™ LH ZTS 121 Solution

Transfer legacy Z18XX fixtures and programs to the latest TestStation platform

Key Features:

- Re-use existing Z18XX test fixtures
- Up to 60% faster throughput than Z18XX system
- Typical conversion time less than 2 hrs.
- More reliable & accurate analog test measurements
- High fault coverage
- Award winning Ultra Pin & SafeTest™ Protection Technologies
- Latest Windows operating system support



The TestStation™ LH ZTS 121 solution's fixture adaptor & program converter easily upgrades Z18XX to TestStation LH.

The TestStation LH ZTS 121 solutions allows manufacturers to smoothly transfer legacy Z18XX programs and fixtures to the latest TestStation LH platform. This solution is designed to help manufacturers preserve their investment in the discontinued Z18XX test system and fixtures, lower their long term support costs, and experience the benefits of the latest in-circuit test technologies that is part of Teradyne's industry leading and award-winning TestStation product family.

Legacy Z18XX to TestStation LH

The TestStation LH ZTS 121 solution consists of a specially configured TestStation LH system with 1024 or 2048 pins (non-multiplexed pure-pin or analog-only pin boards), a specially designed 1024 or 2048 pin Z18XX-to-TSLH fixture adapter that adapts the Z18XX fixture receiver to the TestStation LH receiver interface, and the ZTS translation software that converts Z18XX program files to TestStation program files.

Many Successful Conversions!

The ZTS solution has been successfully deployed at numerous manufacturing sites to upgrade Z18XX programs for the TestStation LH 121 system. Typical results for a single board was a less than 2 hour program con-

version time, less than 5% of components required debug after conversion, and the test throughput was 30-60% faster compared to a typical Z18XX system (one manufacturer was able to replace 3 Z18XX test systems with a single TestStation LH 121 system).

Access the Latest Technology Features

Manufacturers will realize additional benefits from the TestStation LH 121 ZTS solution such as more reliable and accurate analog test measurements, access to the latest generation of Framescan and Boundary Scan test technologies for higher defect coverage, and utilization of the industry's leading digital in-circuit pin with Teradyne's UltraPin II and SafeTest Protection Technologies.

The TestStation LH hardware and software features are scalable so manufacturers can purchase what they need today and easily add additional capabilities later. It supports multiplexed or pure pin configurations; analog only, full digital, or mixed pin board types; and a variety of vectorless test, boundary scan, and functional test options.

Comprehensive Fault Detection

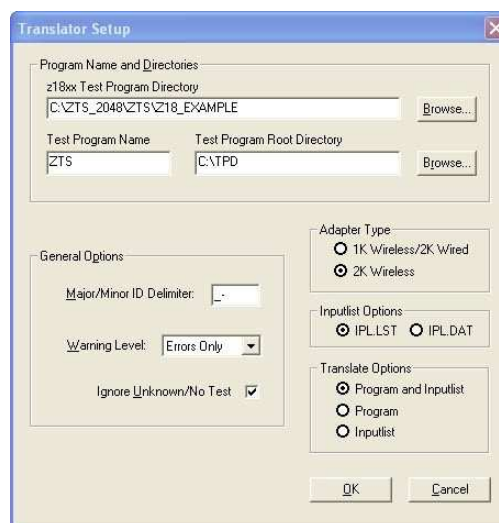
All of the powerful test features that make TestStation the industry's most capable in-circuit test solution are available on the TestStation LH including SafeTest protection technologies, UltraPin II driver/sensors, and Framescan FX vectorless test techniques.

Unpowered test capabilities include shorts, vectorless opens, and analog value testing. Powered-up test capabilities include digital device vector testing, reduced access boundary scan testing, high speed FLASH and ISP device programming, frequency and time event measurements, synchronized mixed signal device test-

ing, and functional cluster testing. These tests can be automatically generated using Teradyne's automatic test generation software or manually created using a simple, but powerful test programming language.

The TestStation LH in-circuit test system is supported worldwide by Teradyne's global support and service locations and by qualified fixture and programming services companies who are part of Teradyne's Support Network (TSN).

For more information on Teradyne's TestStation LH 121 ZTS solution or the TestStation product family contact your local Teradyne Sales Representative system or visit www.teradyne.com/atd.



The TestStation LH ZTS 121 translation software converts Z18XX program files to TestStation program files.

General Product Features

- Requires the purchase of the TestStation LH 121 ZTS adapter and conversion software
- Requires the choice of an analog only or hybrid non-multiplexed system
 - TS LH 121 (All real pins - max pin count 2048 pins per module) or
 - a mixture of 121 and analog only pin boards
- PC based programming and test using the latest Windows® operating systems
- High Performance analog instrumentation and 8 channel measurement matrix
- High-Performance Digital Vector Testing
- Comprehensive and Fast Automatic Test Generation Software
- Automated Test Quality Measurement and Debug Software
- Compact footprint (66 x 33.25 x 44.5 in inches)
- Full Z18XX power supply mapping
- Full Framescan support
- Relay Array Board 1 support
- Additional TestStation features available:
 - Fixture ID and fixture down switch left/right
 - 8 High Voltage relay drivers (60V @500mA)
 - 4 Low Voltage relay drivers (25V @200mA)
 - 13 TTL drivers and 16 TTL sensors



Teradyne, Inc.
Systems Test Group
700 Riverpark Drive
North Reading, MA 01864
U.S.A.
+1.978.370.2700
www.teradyne.com/atd

TestStation DUO, SafeTest, UltraPin II, D2B Alchemist, Framescan, and Framescan FX are trademarks of Teradyne, Inc. All other brand and product names are trademarks or registered trademarks of their respective owners. Information contained in this document is summary in nature and subject to change without notice. Appearance of the final, delivered product may vary from the photographs shown herein.

© Teradyne 2011–All rights reserved,

STG-ZTS--2011-01