



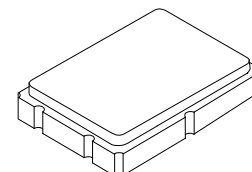
- **Crystal Filter**
- **Surface Mount Seam Weld Package**
- **2-pole IF Filter**
- **High Reliability**
- **Complies with Directive 2002/95/EC (RoHS)**



Surface mount 5.0 x 7.0 x 1.27 mm Crystal Filter

**XFL8001**

**76.8 MHz  
Crystal Filter**



**SM7050-6 Case**

## Electrical Characteristics

Characteristic	Sym	Notes	Minimum	Typical	Maximum	Units
Center Frequency	$F_0$		76.8 MHz, Third Overtone			MHz
Insertion Loss					3.0	dB
Ripple (@ $\pm 4$ kHz)					1.0	dB
3 dB Passband				$\pm 4$		kHz
Stopband (@ $\pm 60$ kHz)			35			dB
Spurious			10			dB
Terminating Impedance				1500 $\Omega$ /-1.4		pF
Power Level					10	dBm
Operating Temperature (without lost of function)			-40 ~ +85			°C
Lid Symbolization (in addition to Lot and/or Date Codes)			8001 YWWS			

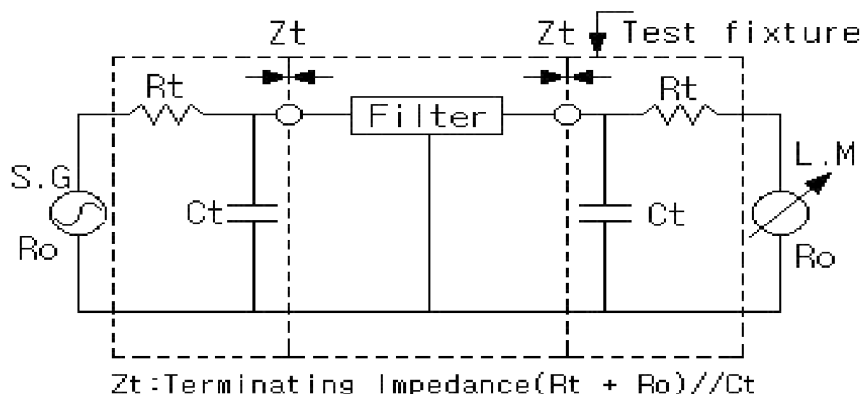


**CAUTION: Electrostatic Sensitive Device. Observe precautions for handling.**

### Notes:

1. The design, manufacturing process, and specifications of this device are subject to change without notice.

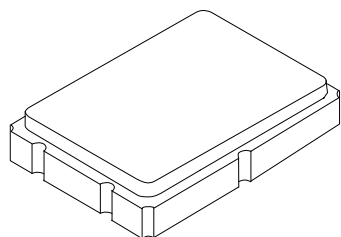
## Testing Circuit



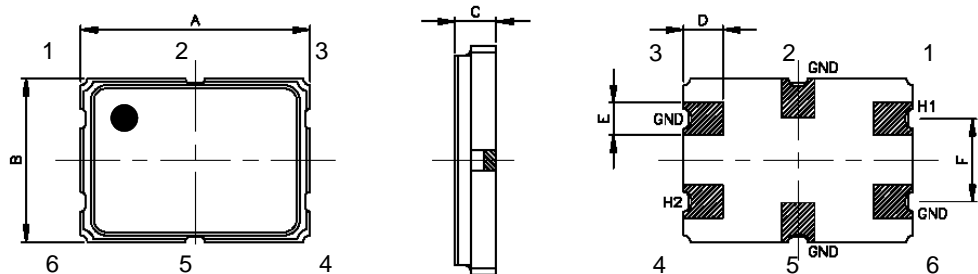
$R_t$	1450 ohms
$R_o$	50 ohms
$C_t$	-1.4 pF

# SM7050-6 Case

## 6-Terminal Surface-Mount Case 5.0 x 7.0 mm Nominal Footprint



Mechanical Dimensions (mm):



A	B	C	D	E	F
7.00 ±0.18	5.00 ±0.18	1.27 ±0.20	1.21 ±0.13	0.99 ±0.13	2.54 ±0.13

Tape Dimensions (mm):

Marking  
Line1: 8001  
Line2: YWWS (Y=year, WW=week, S=shift)

