



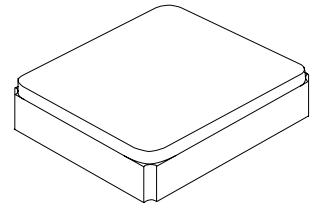
- Surface Mount Seam Weld Package
- Excellent Frequency Stability over Temperature
- Ultra-miniature Package
- Complies with Directive 2002/95/EC (RoHS)



The XTL1024 is a surface mount 1.6 x 1.2 mm crystal unit for use in wireless telecommunications devices, especially where an ultra-miniature package is needed for mobility.

**XTL1024**

**40.00000 MHz  
Crystal Unit**

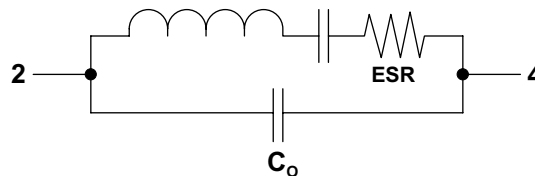


**SM1612-4 Case**

## Electrical Characteristics

Characteristic	Sym	Notes	Minimum	Typical	Maximum	Units
Frequency	$F_O$			40.00000		MHz
Mode of Oscillation			Fundamental			
Frequency Tolerance at 25 $\pm$ 3 $^{\circ}$ C					$\pm 10$	ppm
Storage Temperature Range in Tape and Reel			-40		+85	$^{\circ}$ C
Operating Temperature Range			-20		+75	$^{\circ}$ C
Frequency Stability over Operating Temperature Range		2			$\pm 10$	ppm
Aging				$\pm 1$		ppm/yr
Equivalent Series Resistance	ESR				200	$\Omega$
Drive Level				10	100	$\mu$ W
Shunt Capacitance	$C_O$				5	pF
Load Capacitance	$C_L$			8		pF
Insulation Resistance			500 M $\Omega$ min @ 100V DC			
Lid Symbolization			3E//YW			

**Crystal Equivalent Circuit**



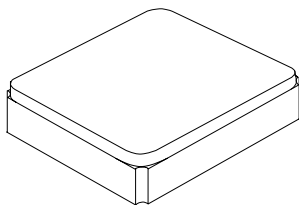
**CAUTION: Electrostatic Sensitive Device. Observe precautions for handling.**

## Notes:

1. The design, manufacturing process, and specifications of this device are subject to change without notice.
2. Referenced to crystal frequency at 25  $^{\circ}$ C.

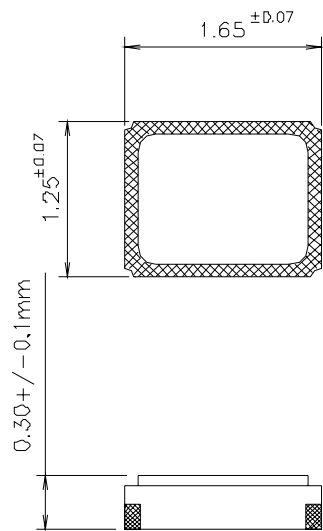
# SM1612-4

## 4-Terminal Ceramic Surface-Mount Case 1.6 X 1.2 mm Nominal Footprint

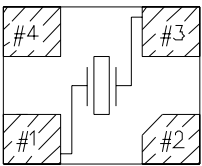


Electrical Connections

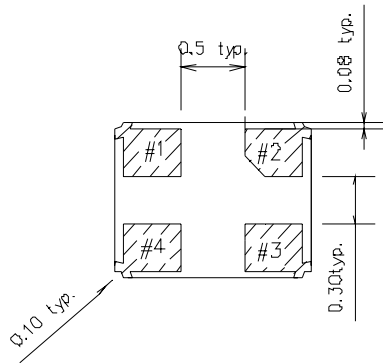
Connection	Terminals
Input / Output	1
Metal Cover	2
Input / Output	3
No Connection	4



Internal Connections  
(Top View)



[NOTE] #4=NC, #2 is connected with a metal cover



Dimensions in mm