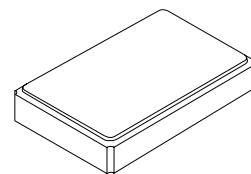


# Preliminary




**XTL1021G**

**16.000000 MHz  
Crystal Unit**



SM2520-4 Case

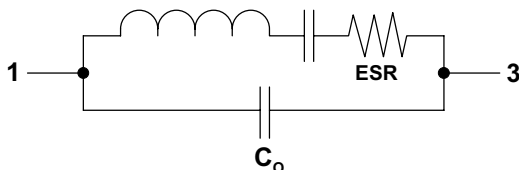
- **Ultra-miniature Surface Mount Seam-weld Package**
- **Good Frequency Stability over Temperature**
- **Excellent Reliability**
- **Complies with Directive 2002/95/EC (RoHS)** 

The XTL1021G is a surface mount 2.5 x 2.0 x 0.6 mm crystal unit for use in wireless telecommunications devices, especially where an ultra-miniature package is required.

## Electrical Characteristics

Characteristic	Sym	Notes	Minimum	Typical	Maximum	Units
Nominal Frequency	$F_O$			16.000000		MHz
Load Capacitance	$C_L$			12		pF
Mode of Vibration			Fundamental			
Drive Level				10		$\mu$ W
Frequency Make Tolerance	$F_L$		$\pm 10$ ppm @ 25 °C $\pm 3$ °C			ppm
Resistance	ESR				100	$\Omega$
Static Shunt Capacitance	$C_O$			3.0		pF
Insulation Resistance, 100 VDC			500			M $\Omega$
Frequency Stability Over Operating Temperature Range			$\pm 10$ ppm (referred to the value at 25 °C)			
Storage Temperature Range			-40		85	°C
Aging					$\pm 1$	ppm/yr
Operating Temperature Range			-10		60	°C
Standard Shipping Quantity on 178 mm (7") Reel				3000		units
Lid Symbolization			3M // <u>YW</u>			

Crystal Equivalent Circuit



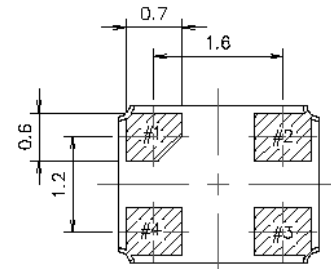
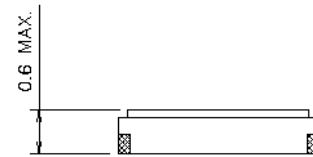
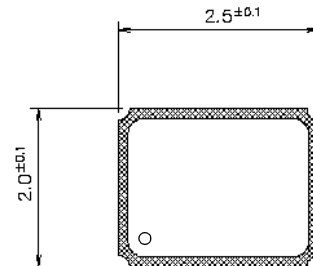
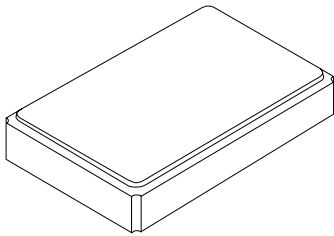
**CAUTION: Electrostatic Sensitive Device. Observe precautions for handling.**

### Notes:

1. The design, manufacturing process, and specifications of this device are subject to change without notice.

# SM2520-4 Case

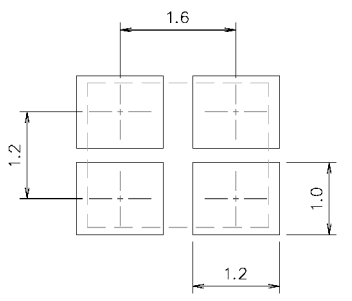
## 4-Terminal Surface-Mount Case 2.5 x 2.0 mm Nominal Footprint



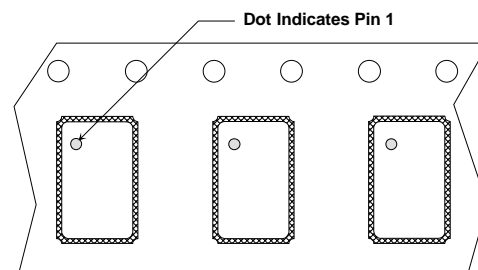
Package Dimensions (mm)

### Electrical Connections

Pin	Connection
1	IN/OUT
2	GND
3	IN/OUT
4	GND

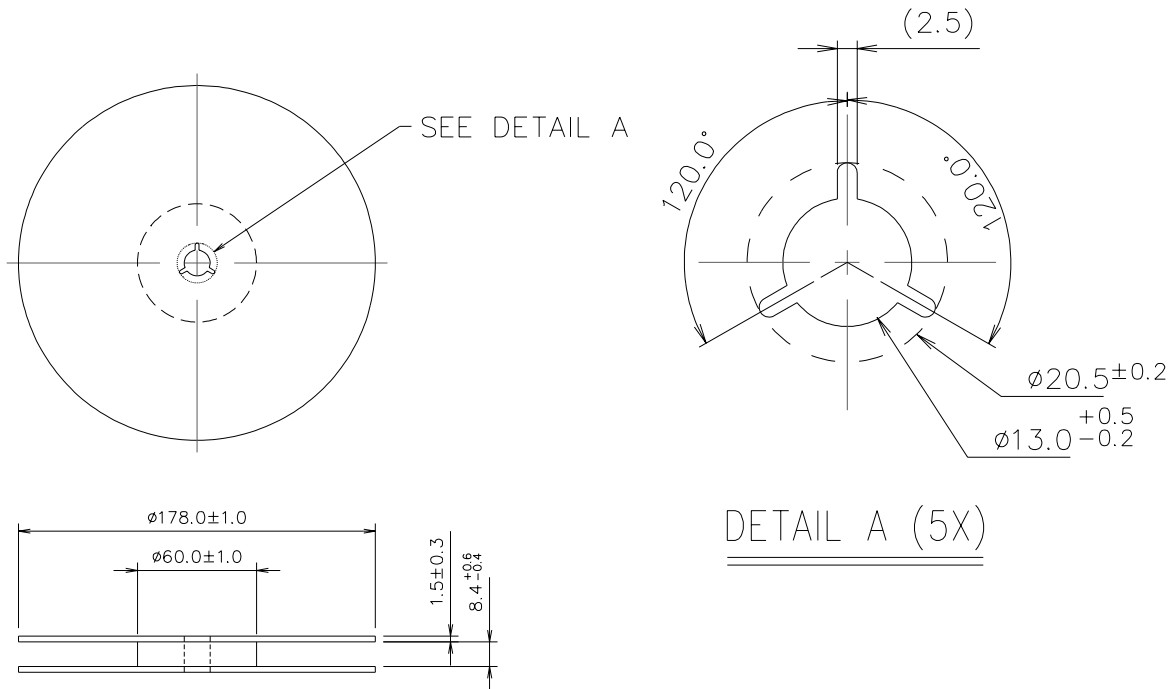


Land Pattern (mm)



Package Orientation in Carrier Tape

# Reel Dimensions



# Tape Dimensions

