

Industrial Power Supplies



TSPWR Series, 180-600 Watt

www.powersolve.co.uk

Features

- For Worldwide Operation - with ultra wide input range from 100 to 550VAC, for single and 3 phase networks
- DIN Rail or Wall Mounting (optional)
- Industrial safety approval package
- Power good signal & Remote ON/OFF
- Overload & over temperature protection
- Vibration & shock proof
- Detachable screw terminal block
- Operating temperature range -25°C to +70°C
- ATEX certification for hazardous locations (opt.)
- Rugged, compact metal casing for harsh industrial environments
- Add on Function Modules available - see separate data sheet



Electrical Specification

Applicable 3 Phase Networks	-TN, TT: 500VAC Star Configuration (EN60950 & UL508) 500VAC Delta (UL508 only) - IT: 400VAC Delta (IEC62103) 230VAC Delta (IEC60950) 500VAC (UL508 only)
Input Voltage Range	85-132VAC / (187-264 / 323-550VAC autorange) selectable by manual slide switch
EMI Emissions	EN61204-3, EN 61000-6-3
EMC Immunity	EN61204-3, EN61000-6-2 (industrial environment)
Output Current Limitation	at max. output current (constant current, automatic recovery)
Over Temperature Protection	switch off at over temperature, automatic restart
Output Characteristic	selectable for parallel operation or battery charging application
Operating Temperature Range	-25°C to +70°C (derate at 2%/°C above 40°C)
Safety Approvals	UL 60950-1 recognised, IEC/EN 60950-1, UL 508, CB report, EN 50178, EN60204, EN61558-2-4, SEMI F47, FM 3611, IEC/EN 60079-15 (class I, Div.2), ATEX 94/9EC (opt. EX)
Degree of protection	safety class I (IEC 536)
Case protection	IP20 (IEC 529)
Vibration & shock	IEC 60068-2-6 / IEC 60068-2-27
Connection	detachable screw terminals
Casing	aluminium (chassis) / stainless steel (cover)
Mounting	snap-on mounting on 35mm DIN-rail (optional wall mounting brackets)

Output Voltage and Current Ratings

MODEL	OUTPUT POWER	OUTPUT VOLTAGE			OUTPUT CURRENT	RIPPLE & NOISE	LINE REG.	LOAD REG.	EFF. (typ.)
		nominal	adj. range	OVP					
TSP180-124WR	180W	24VDC	24-28VDC	35V	7.5A	150mV pk-pk max.	0.5%	0.5%	88%
TSP360-124WR	360W	24VDC	24-28VDC	35V	15.0A	150mV pk-pk max.	0.5%	0.5%	88%
TSP600-124WR	600W	24VDC	24-28VDC	35V	25.0A	150mV pk-pk max.	0.5%	0.5%	88%

add suffix -EX to model number for ATEX certified models, eg. TSP180-124WR-EX

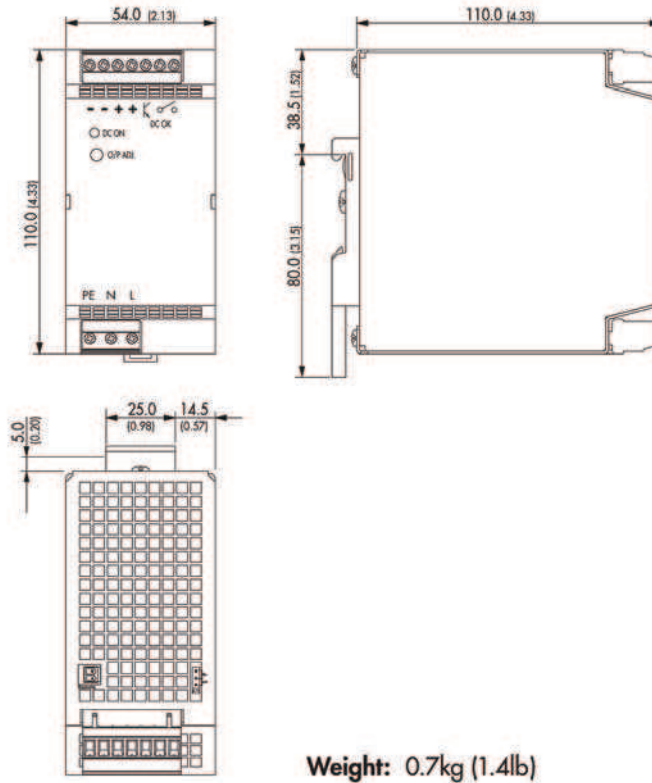
Industrial Power Supplies



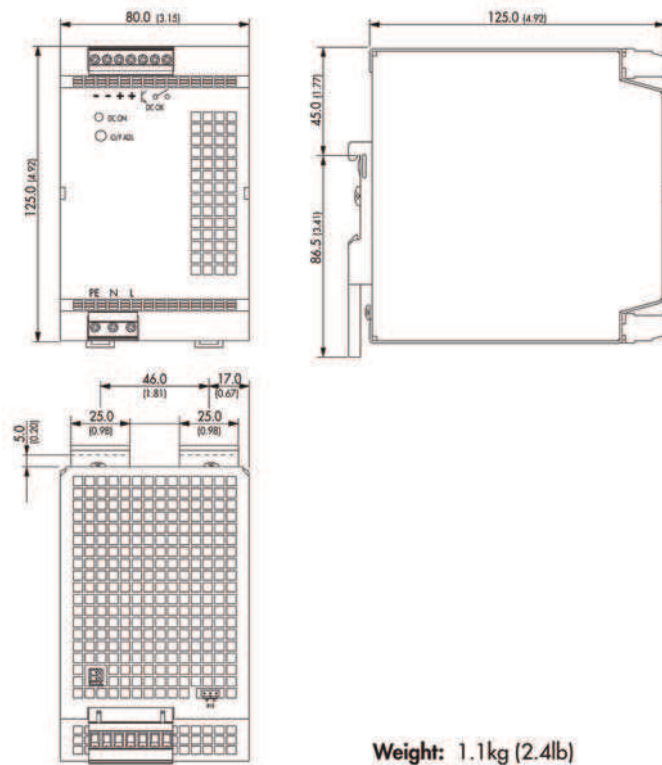
www.powersolve.co.uk

Mechanical Details

Model: TSP180-124WR

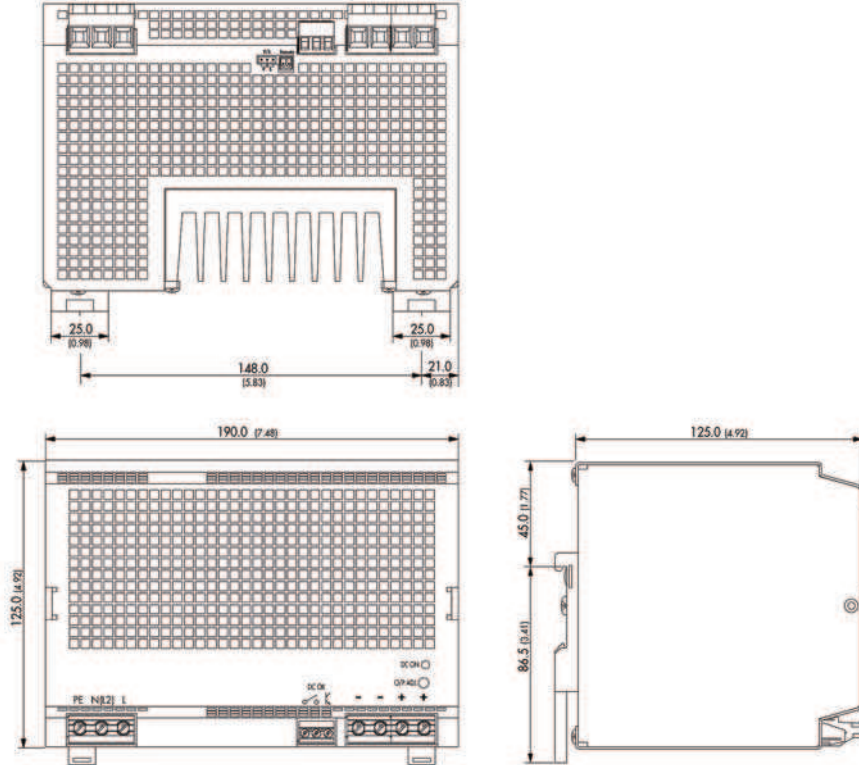


Model: TSP360-124WR



Mechanical Details (cont.)

Model: TSP600-124WR



Wall Mounting Brackets

Wall Bracket Model No.

For use with

Contents of kit

TSP-WMK01

TSP070, TSP090, TSP140, TSP180

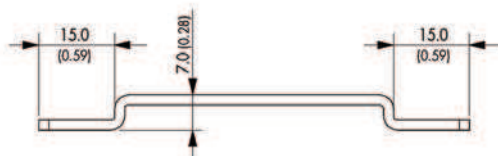
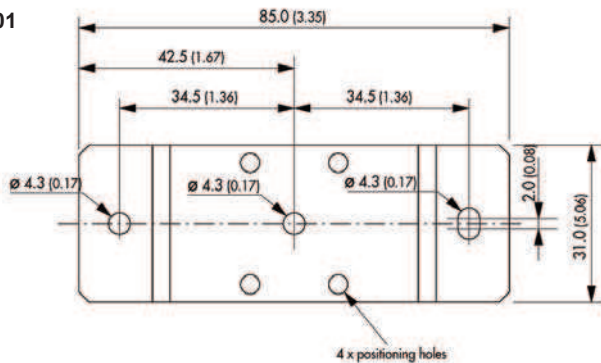
1 x TSP-WMK01

TSP-WMK02

TSP360, TSP600

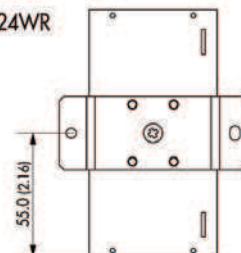
2 x TSP-WMK02

TSP-WMK01



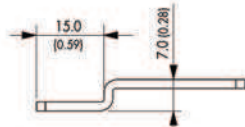
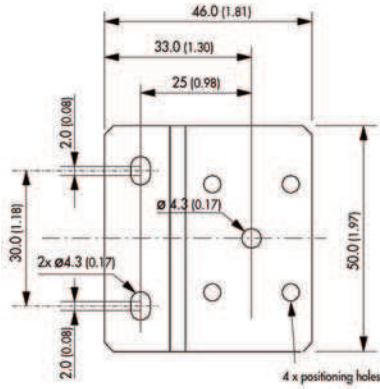
Material: 2 mm Mild Steel
Tolerance: $\pm 0.1\text{mm}$ (± 0.004)

TSP 180-124WR



Wall Mounting Brackets (cont.)

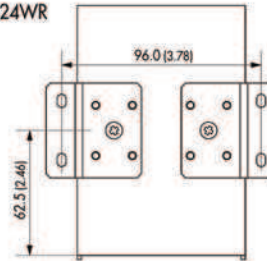
TSP-WMK02



Material: 2 mm Mild Steel
Tolerance: $\pm 0.1\text{mm}$ (± 0.004)

Dimensions: [mm] () = Inch

TSP 360-124WR



TSP 600-124WR

