



# 4.5 Watt BR Series



## Low Noise 25mVpp, Isolated Type DC-DC Converter

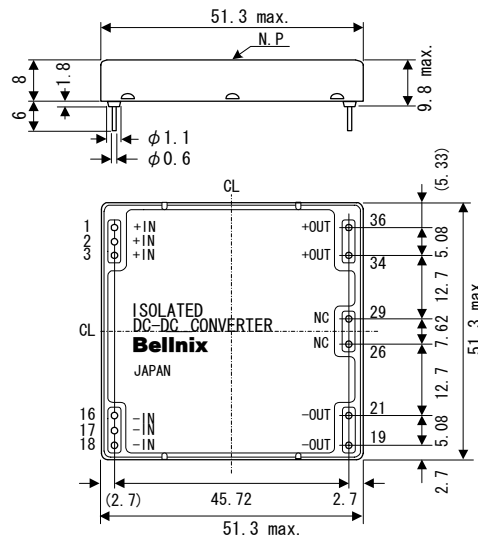
**Input: 5V Output: 5V, 12V, 15V**

- Analog, Digital Optimum
- Floating Type between Input and Output
- Low Noise 25mVp-p
- Short Circuit, Over-Current Protection
- No Electrolytic Capacitor, No Tantalum Capacitor
- 5-Side Metallic shield structure
- EMI Line Filter
- Over-Heat Protection
- Long-Life with TCT Patent Circuit
- Isolation Voltage DC500V
- Low Drift 50mV/8H
- Operating Temp Range -20°C to +70°C (Temp Derating Required for 50°C)
- RoHS Compliance

Models BR-S Series	Input V Vdc	Output V Vdc	Output I mA	Line Reg % (typ.)	Load Reg % (typ.)	Ripple/ Noise mVpp(typ.)	Efficiency % (typ.)
<b>BR05-05S-60</b>	4.75-6	5	0-600	0.5	0.5	25	60
<b>BR05-12S-38</b>		12	0-380				
<b>BR05-15S-30</b>		15	0-300				

Note 1: Derating required for input voltage 5.25V or greater.

<Outline>

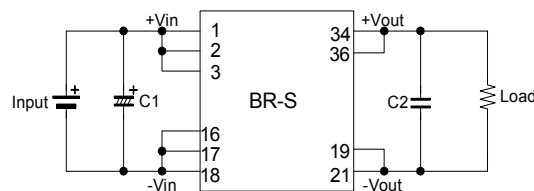


BR-S Series

Pin	Function
1	+Vin
2	+Vin
3	+Vin
16	-Vin
17	-Vin
18	-Vin
19	-Vout
21	-Vout
26	NC
29	NC
34	+Vout
36	+Vout

Units:mm  
Weight:25g typ.

<Standard Connection Diagram>



- Recommended Capacitor

C1=47μF-100μF (Electrolytic or multilayer ceramic capacitor)

C2=1μF (Multilayer ceramic capacitor)

External capacitors are not required, but noise can be lowered by reducing power line impedance and load line impedance.

- Note!

This catalogue is an outline of the products. When designing, be sure to refer to the data sheets.