

Absolute encoders - SSI

End or hollow shaft $\varnothing 12$ mm

Optical singleturn encoders 12 bit

BFF, BFG SSI



BFF SSI with end shaft

Features

- Encoder singleturn / SSI
- Optical sensing
- Resolution: 12 bit
- Small profile depth
- Counting direction input
- End or hollow shaft $\varnothing 12$ mm

Technical data - electrical ratings

Voltage supply	10...30 VDC
Consumption w/o load (typ.)	70 mA (24 VDC)
Initializing time (typ.)	170 ms after power on
Interface	SSI
Function	Singleturn
Steps per turn	4096 / 12 bit
Absolute accuracy	$\pm 0.025^\circ$
Sensing method	Optical
Code	Gray
Code sequence	CW/CCW coded by connection
Inputs	UP/DOWN SSI clock
Output circuit	SSI data: linedriver RS485
Interference immunity	DIN EN 61000-6-2
Emitted interference	DIN EN 61000-6-3
Diagnostic functions	Self-diagnosis Code continuity check
Approval	UL approval / E217823

Technical data - mechanical design

Dimensions (flange)	$\varnothing 58$ mm
Protection DIN EN 60529	IP 65
Operating speed	≤ 12000 rpm (mechanical) ≤ 6000 rpm (electric)
Operating temperature	0...+65 °C
Relative humidity	95 % non-condensing
Resistance	DIN EN 60068-2-6 Vibration 10 g, 10-200 Hz DIN EN 60068-2-27 Shock 50 g, 11 ms
Weight approx.	300 g
Connection	Connector M23, 12-pin Cable 2 m

BFF

Shaft	$\varnothing 12$ mm end shaft
Operating torque typ.	0.009 Nm (IP 42) 0.037 Nm (IP 65)
Materials	Housing: aluminium Housing: steel (connection -5) Flange: aluminium

BFG

Shaft	$\varnothing 12$ mm hollow shaft
Operating torque typ.	0.0175 Nm (IP 42) 0.047 Nm (IP 65)
Materials	Housing: aluminium Flange: aluminium

Absolute encoders - SSI

End or hollow shaft $\varnothing 12$ mm

Optical singleturn encoders 12 bit

BFF, BFG SSI

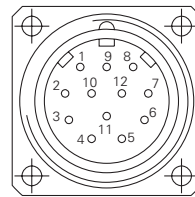
Terminal significance

+Vs	Encoder supply voltage.
0 V	Encoder ground connection relating to +Vs.
Data+	Positive, serial data output of differential linedriver.
Data-	Negative, serial data output of differential linedriver.
Clock+	Positive SSI clock input. Clock+ together with Clock- forms a current loop. A current of approx. 7 mA towards Clock+ input means logic 1 in positive logic.
Clock-	Negative SSI clock input. Clock- together with Clock+ forms a current loop. A current of approx. 7 mA towards Clock- input means logic 0 in positive logic.
UP/DOWN	UP/DOWN counting direction input. This input is standard on High. UP/DOWN means ascending output data with clockwise shaft rotation when looking at flange. UP/DOWN-Low means ascending values with counterclockwise shaft rotation when looking at flange.
DATAVALID	Diagnostic output. An error warning is given at level High. Important: Interferences must be drained by the downstream electronics.
Rot. direction	Ascending position values when looking at the flange and rotating the shaft clockwise.

Terminal assignment

Cable / Connector M23 male
for connection references **-A** and **-5**

Connector	Core colour	Signals	Description
Pin 1	yellow	Clock-	Clock signal
Pin 2	green	Clock+	Clock signal
Pin 3	grey	Data+	Data signal
Pin 4	pink	Data-	Data signal
Pin 5	–	n.c.	–
Pin 6	–	n.c.	–
Pin 7	–	n.c.	–
Pin 8	blue	UP/DOWN	Counting dir.
Pin 9	red	DATAVALID	Diagnostic outp.
Pin 10	–	n.c.	–
Pin 11	brown	+Vs	Supply voltage
Pin 12	white	0 V	Supply voltage
Screen	connected to housing		
Cable data	8 x 0,14 mm ²		



Trigger level

Control inputs	Input circuit
Input level Low	<0,4 V (>2 ms)
Input level High	+Vs or open

Absolute encoders - SSI

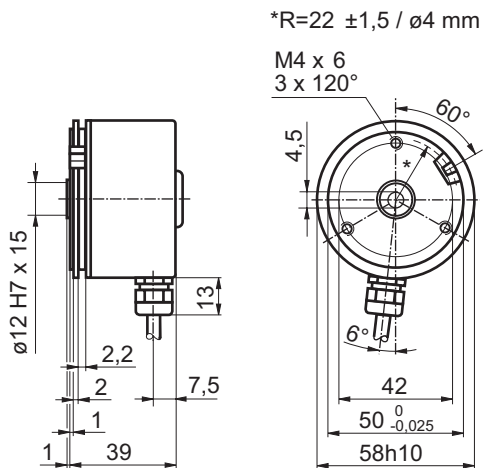
End or hollow shaft $\varnothing 12$ mm

Optical singleturn encoders 12 bit

BFF, BFG SSI

Dimensions

BFF SSI



BFG SSI

