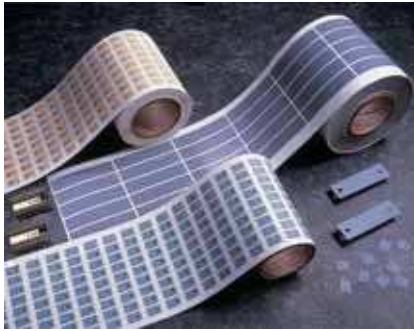


### Features and Benefits

- Thermal impedance:  
0.48°C-in<sup>2</sup>/W (@50 psi)
- Withstands high voltages
- High dielectric strength
- Very durable



Sil-Pad K-4 uses a specially developed film which has high thermal conductivity, high dielectric strength and is very durable. Sil-Pad K-4 combines the thermal transfer properties of well-known Sil-Pad rubber with the physical properties of a film.

Sil-Pad K-4 is a durable insulator that withstands high voltages and requires no thermal grease to transfer heat. Sil-Pad K-4 is available in customized shapes and sizes.

TYPICAL PROPERTIES OF SIL-PAD K-4						
PROPERTY		IMPERIAL VALUE		METRIC VALUE		TEST METHOD
Color		Gray		Gray		Visual
Reinforcement Carrier		Kapton		Kapton		—
Thickness (inch) / (mm)		0.006		0.152		ASTM D374
Hardness (Shore A)		90		90		ASTM D2240
Breaking Strength (lbs/inch) / (kN/m)		30		5		ASTM D1458
Elongation (%)		40		40		ASTM D412
Tensile Strength (psi) / (MPa)		5000		34		ASTM D412
Continuous Use Temp (°F) / (°C)		-76 to 356		-60 to 180		—
ELECTRICAL						
Dielectric Breakdown Voltage (Vac)		6000		6000		ASTM D149
Dielectric Constant (1000 Hz)		5.0		5.0		ASTM D150
Volume Resistivity (Ohm-meter)		10 <sup>12</sup>		10 <sup>12</sup>		ASTM D257
Flame Rating		VTM-O		VTM-O		UL94
THERMAL						
Thermal Conductivity (W/m-K)		0.9		0.9		ASTM D5470
THERMAL PERFORMANCE vs PRESSURE						
Pressure (psi)		10	25	50	100	200
TO-220 Thermal Performance (°C/W)		3.66	3.43	3.13	2.74	2.42
Thermal Impedance (°C-in <sup>2</sup> /W) (1)		1.07	0.68	0.48	0.42	0.38
1) The ASTM D5470 test fixture was used. The recorded value includes interfacial thermal resistance. These values are provided for reference only. Actual application performance is directly related to the surface roughness, flatness and pressure applied.						

1) The ASTM D5470 test fixture was used. The recorded value includes interfacial thermal resistance. These values are provided for reference only. Actual application performance is directly related to the surface roughness, flatness and pressure applied.

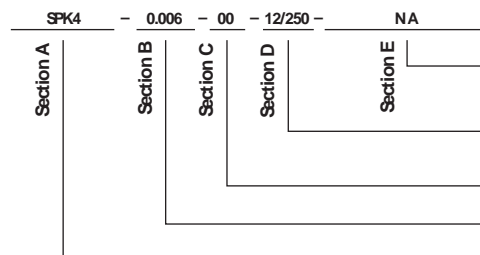
### Typical Applications Include:

- Power supplies
- Power semiconductors
- Motor controls

### Configurations Available:

- Sheet form, die-cut parts and roll form
- With or without pressure sensitive adhesive

### Building a Part Number



### Standard Options

◀ example

NA = Selected standard option. If not selecting a standard option, insert company name, drawing number, and revision level.

— = Standard configuration dash number,  
1212 = 12" x 12" sheets, 12/250 = 12" x 250" rolls, or  
00 = custom configuration

AC = Adhesive, one side  
00 = No adhesive

Standard thicknesses available: 0.006"

SPK4 = Sil-Pad K4 Material

Note: To build a part number, visit our website at [www.bergquistcompany.com](http://www.bergquistcompany.com).

Sil-Pad®: U.S. Patents 4,574,879; 4,602,125; 4,602,678; 4,685,987; 4,842,911 and others.  
Kapton® is a registered trademark of DuPont.



[www.bergquistcompany.com](http://www.bergquistcompany.com)

The Bergquist Company -  
North American Headquarters  
18930 West 78th Street  
Chanhassen, MN 55317  
Phone: 800-347-4572  
Fax: 952-835-0430

The Bergquist Company -  
European Headquarters  
Bramenberg 9a, 3755 BT Einnes  
Netherlands  
Phone: 31-35-5380684  
Fax: 31-35-5380295

The Bergquist Company - Asia  
Room 15, 8/F Wah Wai Industrial Centre  
No. 38-40, Au Pui Wan Street  
Fotan, Shatin, N.T. Hong Kong  
Ph: 852.2690.9296  
Fax: 852.2690.2344

All statements, technical information and recommendations herein are based on tests we believe to be reliable, and THE FOLLOWING IS MADE IN LIEU OF ALL WARRANTIES, EXPRESSED OR IMPLIED, INCLUDING THE IMPLIED WARRANTIES OF MARKETABILITY AND FITNESS FOR PURPOSE. Sellers and manufacturers' only obligation shall be to replace such quantity of the product proved to be defective. Before using user shall determine the suitability of the product for its intended use, and the user assumes all risks and liability whatsoever in connection therewith. NEITHER SELLER NOR MANUFACTURER SHALL BE LIABLE EITHER IN TORT OR IN CONTRACT FOR ANY LOSS OR DAMAGE, DIRECT, INCIDENTAL OR CONSEQUENTIAL, INCLUDING LOSS OF PROFITS OR REVENUE ARISING OUT OF THE USE OR THE INABILITY TO USE A PRODUCT. No statement, purchase order or recommendations by seller or purchaser not contained herein shall have any force or effect unless in an agreement signed by the officers of the seller and manufacturer.