

# Preset counters mechanic

## Meter counters PTB approved, adding

### Display 5 digits, manual reset by lever

#### ME282 PTB



ME282 - PTB Meter counter

#### Features

- PTB Preset counter with one or two presets
- Meter counter
- Adding
- Display 5-digits
- Reset by lever

#### Technical data - electrical ratings

Preset	2 presets
Preset setting	Press reset button and hold. Enter desired value in any order. Release reset button.
Limit switch	Trigger at preset 1 (adding)
Precontact	Trigger at preset 2
Output contact	Change-over contact
Switching voltage	230 VAC / VDC
Switching current	2 A
Switching capacity	100 VA / 30 W
Spark extinguisher	Recommended for inductive load

#### Technical data - mechanical design

Function	PTB Meter counter with preset
Display	White numbers on black Decimal digit with scale
Number of digits	5 digits
Digit height	7 mm
PTB approval	1.3 / 91.08
Count mode	Adding in a rotational direction to be indicated, subtracting in reverse direction. 2 revs. = 10 counts
Drive shaft	Both sides, $\varnothing 7$ mm
Reset	By reset lever to preset value. Do not let snap lever or make jerky movements.
Measuring speed	2 revs. = 10 di. = $<250.0$ m/min
Measuring accuracy	1 dm
Measuring range	9999.95 m
Ambient temperature	0...+60 °C
Housing type	Surface mount housing
Housing colour	Grey
Dimensions W x H x L	120 x 105 x 95 mm
Dimensions mounting plate	158 x 105 mm
Mounting	Base plate, 4 mounting holes
Weight approx.	140 g
Material	Aluminium die cast alloy
Connection	Terminal block connector

# Preset counters mechanic

## Meter counters PTB approved, adding Display 5 digits, manual reset by lever

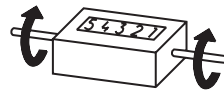
ME282 PTB

### Part number

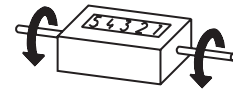
ME282.0   0 A   A

- Measuring range  
A 9999.95 m / decimal digit with scale
- Count mode /Direction of rotation  
01 2 revs. = 10 digits / I  
02 2 revs. = 10 digits / II
- Housing  
A Surface mount housing, grey
- Preset / reset
- 1 1 preset / reset lever, permanent contact
- 3 2 presets / reset lever, permanent contact

### Direction of strokes and rotation



Away from user  
Sense of rotation I



Towards user  
Sense of rotation II

### Accessories

#### Measuring wheels

- MR512.07A Circumf. 50 cm, knurled aluminium
- MR542.07D Circumf. 50 cm, smooth Hytrel TPE-E
- MR552.07A Circumf. 50 cm, smooth Vulkollan PUR
- MR562.07A Circumf. 50 cm, knopped rubber NBR Nitril
- MR592.07D Circumf. 50 cm, grooved Hytrel TPE-E

### Dimensions

