

Preset counters mechanic

Meter and revolution counters, adding

Display 5 digits, manual reset by lever

ME280, UE280



ME280 - Meter counter



UE280 - Revolution counter

Technical data - electrical ratings

Preset	2 presets
Preset setting	Press reset button and hold. Enter desired value in any order. Release reset button.
Limit switch	Trigger at preset 1 (adding)
Precontact	Trigger at preset 2
Output contact	Change-over contact
Switching voltage	230 VAC / VDC
Switching current	2 A
Switching capacity	100 VA / 30 W
Spark extinguisher	Recommended for inductive load

Features

- Preset counter with one or two presets
- Meter or revolution counter
- Adding
- Display 5-digits
- Reset by lever

Technical data - mechanical design

Number of digits	5 digits
Digit height	7 mm
Count mode	Adding in a rotational direction to be indicated, subtracting in reverse direction. See part number key
Drive shaft	Both sides, $\varnothing 7$ mm
Reset	By reset lever to preset value. Do not let snap lever or make jerky movements.
Ambient temperature	0...+60 °C
Housing type	Surface mount housing
Housing colour	Grey
Dimensions W x H x L	120 x 105 x 95 mm
Dimensions mounting plate	158 x 105 mm
Mounting	Base plate, 4 mounting holes
Weight approx.	1400 g
Material	Aluminium die cast alloy
Connection	Terminal block connector

ME280

Function	Meter counter with preset
Display	White numbers on black Decimal digits in red
Measuring speed	2 revs. = 1 digit = <3000 m/min 2 revs. = 10 di. = <300.0 m/min
Measuring accuracy	1 m, 1 dm
Measuring range	9 999.9 m and 99 999 m

UE280

Function	Revolution counter with preset
Display	White numbers on black
Operating speed	≤6000 rpm
Measuring range	99 999

Preset counters mechanic

Meter and revolution counters, adding Display 5 digits, manual reset by lever

ME280, UE280

Part number

Meter counter

ME280.0

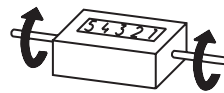
		<u>Measuring range</u>
	A	99 999 m
	B	9999.9 m
		<u>Count mode /Direction of rotation</u>
07		2 revs. = 10 digits / I
08		2 revs. = 10 digits / II
13		2 revs. = 1 digit / I
14		2 revs. = 1 digit / II
		<u>Preset / reset</u>
1		1 preset / reset lever, permanent contact
3		2 presets / reset lever, permanent contact

Revolution counter

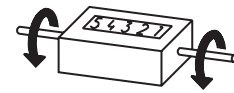
UE280.0

		<u>Measuring range</u>
	A	99 999
		<u>Count mode /Direction of rotation</u>
11		1 rev. = 1 digit / I
12		1 rev. = 1 digit / II
		<u>Preset / reset</u>
1		1 preset / reset lever, permanent contact
3		2 presets / reset lever, permanent contact

Direction of strokes and rotation



Away from user
Sense of rotation I



Towards user
Sense of rotation II

Accessories

Measuring wheels for ME280

MR512.07A	Circumf. 50 cm, knurled aluminium
MR542.07D	Circumf. 50 cm, smooth Hytrel TPE-E
MR552.07A	Circumf. 50 cm, smooth Vulkollan PUR
MR562.07A	Circumf. 50 cm, knopped rubber NBR Nitril
MR592.07D	Circumf. 50 cm, grooved Hytrel TPE-E

Dimensions

