



# CHEROKEE INTERNATIONAL

*"The Powerful Choice"*

## QF22 Series

70 Watt Single and Multiple Output Switching Power Supplies

### Features

- ◆ TUV licensed to IEC 950 and EN 60950
- ◆ CSA certified to C 22.2 No. 234 & 950 and EB 1402C
- ◆ Fully compliant with FCC and VDE (Level A) standards for EMI
- ◆ UL recognized to UL 1950
- ◆ 0°- 70°C operating ambient
- ◆ Wide range 90-264VAC input, 47-63Hz
- ◆ Input surge current limited
- ◆ Brown-out protection
- ◆ Overload protection
- ◆ Overvoltage protection
- ◆ Reverse voltage protection
- ◆ Low noise output



**70 Watts**

### Product Specifications

**AC Input (Nominal):** 115/230 VAC, 47-63Hz.  
Range: 90-264VAC wide range.

**DC Output Range:** Output 1 adjustable  $\pm 5\%$ , output 2 tracks output 1, outputs 3 & 4 fixed  $\pm 5\%$ .

**Output Tolerances:**

	<u>I-Min</u>	<u>I-Max</u>	<u>Tolerance</u>
Output 1 (+5V)	0.5A	10A	$\pm 5\%$
Output 2 (+12V)	0.4A	4.0A	$\pm 5\%$
(+15V)	0.4A	4.0A	$\pm 5\%$
(+24V)	0.2A	2.0A	$\pm 5\%$
Output 3 All	0A	1.0A	$\pm 5\%$
Output 4 All	0A	1.0A	$\pm 5\%$

**Note:** Tolerance includes load regulation, cross regulation, centering, line regulation and temperature regulation.

**Ripple/Noise:** Sum: 1% Pk-Pk, all outputs.

**Overshoot & Undershoot:** Deviation: 2% for 25% load change at 5A/ $\mu$ sec, Response: 200  $\mu$ sec to 1% deviation, all outputs turn-on or turn off.

**Temperature Coefficient:**  $\pm 0.02\%$ °C, all outputs.

**Temperature Range:** Operation 0°C to 50°C at rated output power derate linearly to 50% power at 70°; Storage: -55°C to +85°C.

**Efficiency:** 65% typical.

**Overload Protection:** Output 1 & 2: Current limited by primary power limiting. Output 3 & 4: Current limited by post regulator characteristic.

**Overload Protection:** Output 1: output level > 6.25V  $\pm 5\%$  causes shutdown, automatic recovery.

**Reverse Voltage Protection:** 100% of rated output current.

**Hold-up time:** 16 ms after loss of nominal AC Input, for specified load regulation.

**In-rush Surge:** 16A Pk/150 VAC, 35A Pk/230 VAC cold start.

**Fusing:** 3A, type 5MF for 115/230 VAC.

**Shock/Vibration:** Per MIL-STD-810C. Vibration: Method 514.2 Procedures X, X1. Shock (Transit): Method 516.2, Procedure II.

**Weight:** 11.0 oz.

**Warranty:** 1 year from date of shipment.

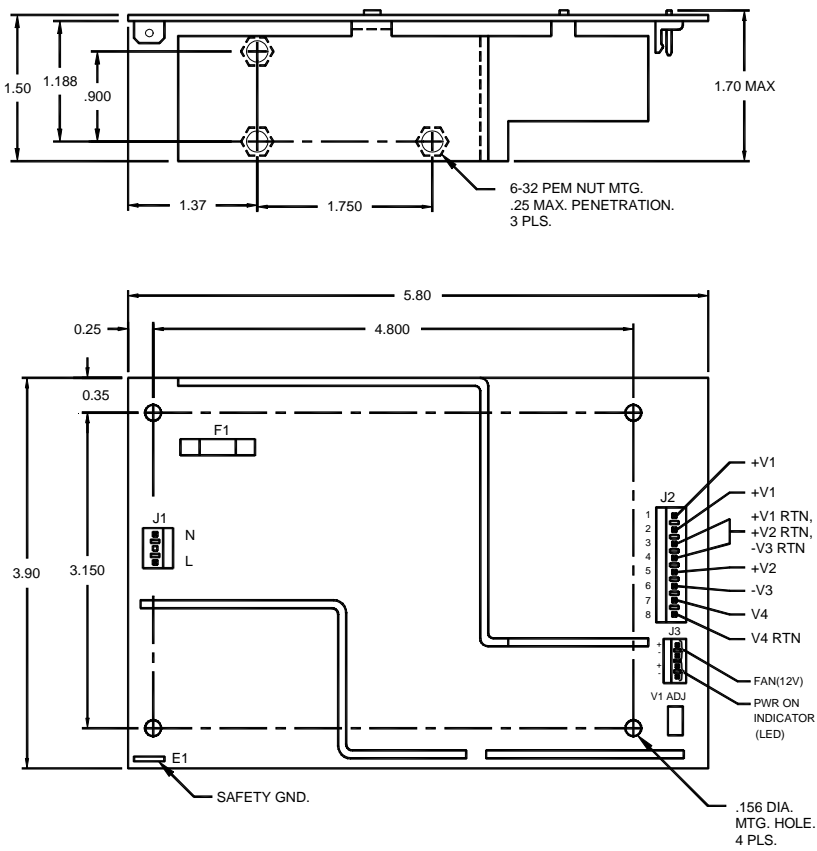
**Note:** Specifications subject to change without notice.

QF22 - VOLTAGE COMBINATIONS												
MODEL NUMBER	OUTPUT 1			OUTPUT 2			OUTPUT 3			OUTPUT 4		
	Volts	Amps	Peak	Volts	Amps	Peak	Volts	Amps	Peak	Volts	Amps	Peak
QF22A1	+5	10	12	+12	4	5	-12	1	-	5	1	-
QF22B1	+5	10	12	+24	2	2.5	-12	1	-	5	1	-
QF22C1	+5	10	12	+12	4	5	-12	1	-	12	1	-
QF22D1	+5	10	12	+15	4	5	-15	1	-	5	1	-
QF22E1	+5	10	12	-	-	-	-12	1	-	12	1	-
QF22F1	+5	10	12	+12	4	5	-	-	-	-	-	-
QF22G1	+5	14	16	-	-	-	-	-	-	-	-	-
QF22H1	+12	6	7	-	-	-	-	-	-	-	-	-
QF22I1	+5	4	-	+12	4	9	-	-	-	-	-	-

**Total (sum) of rated DC output power, Maximum:**

Convection cooling only	50 Watts	• Other output combinations are also available. Consult factory
Forced-air cooling (25 CFM)	70 Watts	
Peak Power (10 sec)	90 Watts	

### Outline/Mounting/Interface



	PCB CONNECTOR	MATING CONNECTOR
<b>J-1</b>		
AMP	640445-3	640427-3
MOLEX	09-74-1031	09-50-3031
PANDUIT	HLSS-156-3	CE 156F20-3
<b>J-2</b>		
AMP	640445-8	640427-8
MOLEX	09-74-1081	09-50-3081
PANDUIT	HLSS-156-8	CE 156F20-8
<b>J-3</b>		
AMP	640445-4	640427-4
SAFETY GND. FASTON .25 TAB		