

5 channels step-up white LED driver

Datasheet – production data

Features

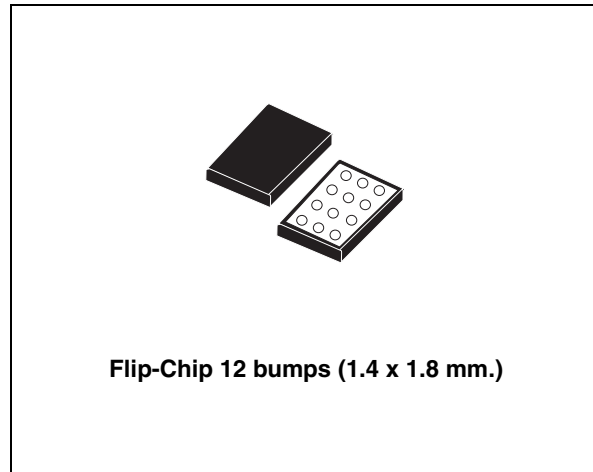
- Operating input voltage range from 2.3 V to 5.5 V
- $\pm 7.5\%$ LED current accuracy
- Two LEDs in series per channel
- High side current source
- Up to 125 mA of total LED current
- 86% efficiency at 100 mA
- PWM dimming with automatic shutdown time window
- 2.5 MHz switching frequency
- CSP 12 bumps 0.4 mm. pitch 1.4 x 1.8 mm.

Applications

- LCD backlight with up to 10 LEDs
- Cellular phones
- PDAs

Description

The STLED25 is a fixed frequency, high efficiency, boost DC-DC converter with five parallel high side current sources. It is capable of providing 125 mA of total current with a maximum voltage of 7.5 V on each channel. Each current source supports single or dual LED connection. The output voltage of the step-up converter is automatically set at 100 mV above the highest voltage required on any driver, to guarantee proper operation of the linear current sources. The device implements a self-test feature to detect failure of any of the LEDs and to disable the related channel. The failure status is reset as soon the IC is disabled. This mode of failure detection allows the device to



continue operating driver channels that are functioning normally, while avoiding excessive power consumption or associated thermal issues. The control technique is able to maintain the efficiency close to 87% at medium load and higher than 85% at light or full load. The device also includes soft-start control, inrush current limit, thermal shutdown and inductor peak current limit. The STLED25 is packaged in a 12-bump CSP (1.4 x 1.8 mm, 0.5 mm height).

Table 1. Device summary

| Order code | Package | Packaging |
|------------|-------------|---------------|
| STLED25JR | Flip-Chip12 | Tape and reel |

Contents

| | | |
|----------|--|-----------|
| 1 | Application schematic | 3 |
| 2 | Pin configuration | 5 |
| 3 | Maximum ratings | 6 |
| 4 | Electrical characteristics | 7 |
| 5 | Typical application performance | 9 |
| 5.1 | Quiescent current consumption | 9 |
| 5.2 | Switching frequency | 9 |
| 5.3 | Continuous output current | 10 |
| 5.4 | Efficiency at 100 mA I _{OUT} | 10 |
| 5.5 | Efficiency at 75 mA I _{OUT} | 11 |
| 5.6 | Efficiency at 50 mA I _{OUT} | 11 |
| 5.7 | Absolute channel accuracy | 12 |
| 5.8 | Current matching between LED strings | 12 |
| 5.9 | PWM dimming linearity 0.39 - 10% | 13 |
| 5.10 | PWM dimming linearity 10 - 100% | 13 |
| 5.11 | Inductor peak current | 14 |
| 5.12 | Maximum continues output current | 14 |
| 6 | Detailed description | 16 |
| 6.1 | Boost DC-DC converter operation | 16 |
| 6.2 | Current setting | 16 |
| 6.3 | EN13 and EN45 | 16 |
| 6.4 | Modes of operation | 17 |
| 6.5 | Undervoltage lockout | 17 |
| 6.6 | Overtemperature protection | 18 |
| 6.7 | Open LED protection | 18 |
| 6.8 | Overvoltage protection | 18 |
| 6.9 | Short LED protection | 18 |

| | | |
|----------|--|-----------|
| 7 | Application information | 19 |
| 7.1 | External passive components | 19 |
| 7.1.1 | Inductor selection | 19 |
| 7.1.2 | Input and output capacitor selection | 19 |
| 7.2 | Recommended PCB layout | 20 |
| 8 | Package mechanical data | 24 |
| 9 | Revision history | 29 |

1 Application schematic

Figure 1. STLED25 application schematic

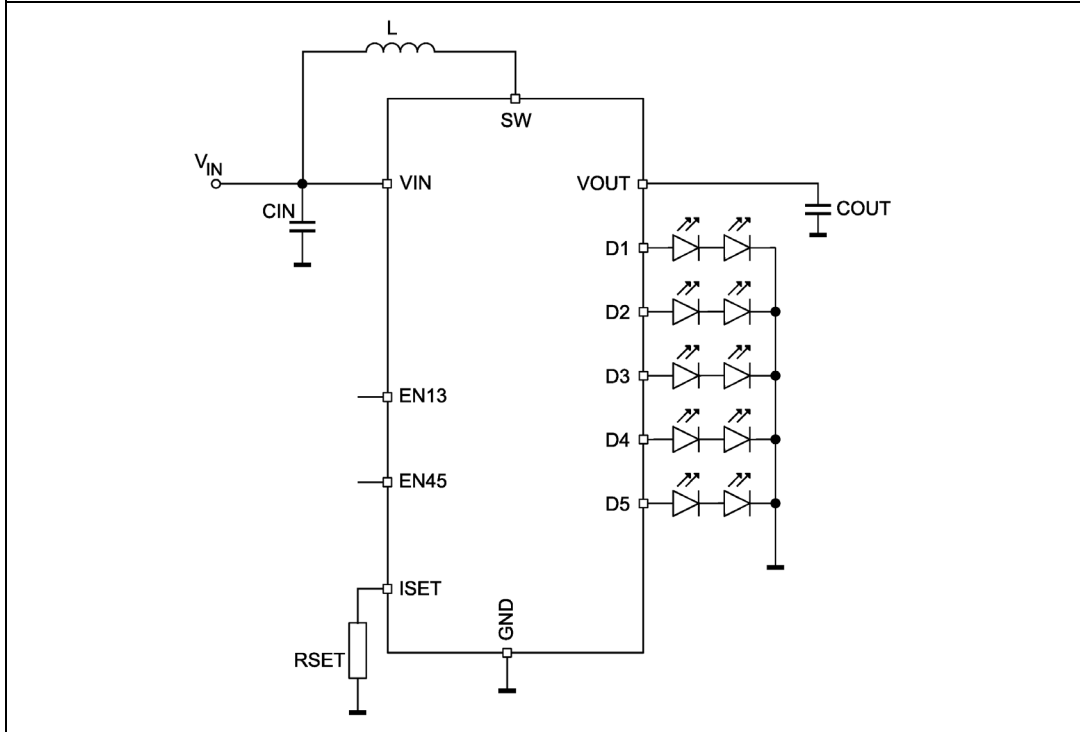


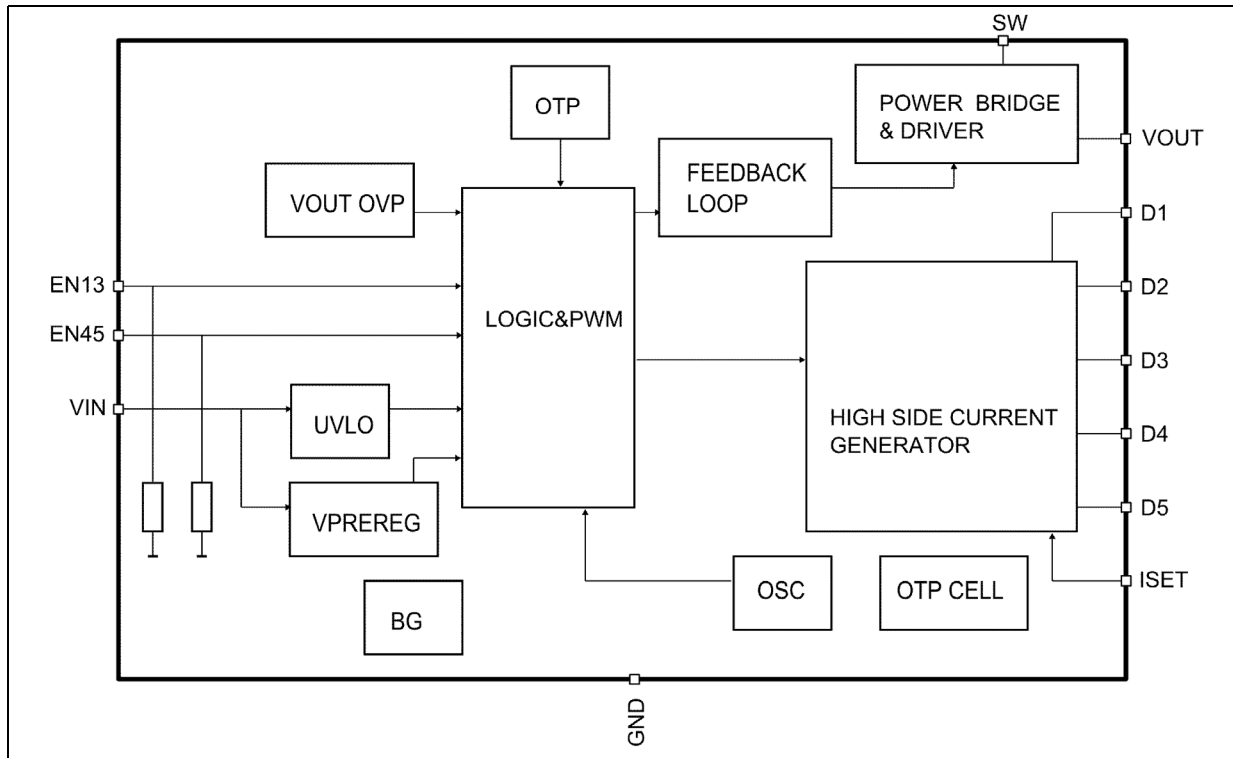
Table 2. Typical external components

| Component | Manufacturer | Part number | Value | Size |
|------------------|--------------|-------------------|---------------------|------|
| C _{IN} | Murata | GRM155R60J155M | 1.5 μF | 0402 |
| C _{OUT} | Murata | GRM219R61A106ME47 | 10 μF | 0805 |
| L | Samsung | CIG21K4R7SCE | 4.7 μH | 0805 |
| R _{SET} | | | 25 k ⁽¹⁾ | 0402 |

1. For 20 mA per branch.

Note: All the above components refer to a typical application. Operation of the device is not limited to the choice of these external components.

Figure 2. Functional block diagram



2 Pin configuration

Figure 3. Pin configuration (top view)

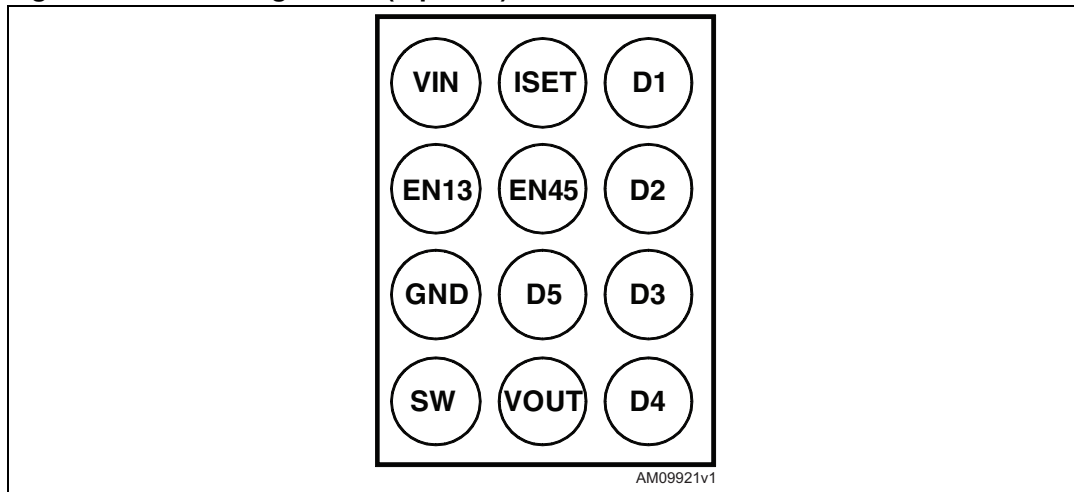


Table 3. Pin description

| Pin name | Pin number | Description |
|----------|------------|--|
| VIN | A1 | Supply from battery |
| ISET | A2 | Resistor to GND from 1.28 V (typ.) internal reference: 390x current multiplier |
| D1 | A3 | String 1 controlled by EN13 |
| EN13 | B1 | Positive polarity. EN13 & 45 Low = IC shutdown |
| EN45 | B2 | Positive polarity. EN13 & EN45 Low = IC shutdown |
| D2 | B3 | String 2 controlled by EN13 |
| GND | C1 | Power ground and IC ground |
| D5 | C2 | String 5 controlled by EN45 |
| D3 | C3 | String 3 controlled by EN13 |
| SW | D1 | Inductor connection to internal switch |
| VOUT | D2 | DC-DC output to V _{OUT} capacitor |
| D4 | D3 | String 4 controlled by EN45 |

3 Maximum ratings

Table 4. Absolute maximum ratings

| Symbol | Parameter | Value | Unit |
|------------------|--|-------------------------|------|
| V _{IN} | Supply voltage | -0.3 to +6 | V |
| SW | Switching node | -0.3 to + 11 | V |
| V _{OUT} | Output voltage | -0.3 to +10 | V |
| D1-D5 | LED strings | -0.3 to +10 | V |
| EN13, EN45 | Signal pins | -0.3 to V _{IN} | V |
| I _{SET} | Current setting | -0.3 V to 2 | V |
| ESD | Machine model | ± 200 | V |
| | Human body model | ± 2000 | |
| | Charged device model | ± 500 | |
| T _{AMB} | Operating ambient temperature | -30 to 85 | °C |
| T _J | Maximum operating junction temperature | +150 | °C |
| T _{STG} | Storage temperature | -65 to 150 | °C |

Table 5. Thermal data

| Symbol | Parameter | Value | Unit |
|-------------------|---|-------|------|
| R _{THJA} | Junction to ambient thermal resistance (1) | 62 | °C/W |

1. This parameter corresponds to a 4-layer PCB board with 1 inch² of cooling area.

4 Electrical characteristics

- 30 °C < T_A < 85 °C, V_{IN} = 3.7 V; V_{OUT} = 7.5 V, EN13 = EN45 = V_{IN}, typical values are at T_A = 25 °C, unless otherwise specified.

Table 6. Electrical characteristics

| Symbol | Parameter | Test conditions | Min. | Typ. | Max. | Unit |
|------------------------|--|---|------|------|------|------|
| General section | | | | | | |
| V _{IN} | Operating input voltage | | 2.3 | 3.7 | 5.5 | V |
| I _q | Shutdown mode | EN13 = EN45 = 0 | | 0.5 | 2 | µA |
| V _{UVLO} | Undervoltage lockout threshold | V _{IN} rising | | 1.9 | 2.0 | V |
| | | V _{IN} falling | 1.7 | 1.8 | | |
| f _{SW} | Switching frequency | | 2.25 | 2.5 | 2.75 | MHz |
| I _{OUT} | Continuous output current ⁽¹⁾ | V _{IN} = 2.5 V, V _{OUT} = 6.2 V | | | 125 | mA |
| I _{PK} | Inductor peak current | | 550 | | 650 | mA |
| η | Application efficiency ⁽¹⁾ (V _{IN} = 3.7 V; V _{OUT} = 6.2 V; see application schematic) | I _{OUT} = 50 mA | | 84 | | % |
| | | I _{OUT} = 75 mA | | 86 | | |
| | | I _{OUT} = 100 mA | | 86 | | |
| η _{DC-DC} | DC-DC converter efficiency | I _{OUT} = 100 mA | | 88 | | |
| V _{OVP} | Overvoltage protection | | 8.8 | 9.05 | 9.3 | V |
| OVP _{HYST} | Overvoltage protection hysteresis | | | 250 | | mV |
| T _{SHDN} | Thermal shutdown | | | 150 | | °C |
| | Hysteresis | | | 20 | | °C |
| LEDs current | | | | | | |
| I _{D1-D5} | Current matching | | -5.5 | | +5.5 | % |
| V _{SCP} | Short-circuit protection on LEDs | Measured on the Dx pins | | 1.28 | | V |
| I _{LED} | Absolute channel accuracy | 5 mA < I _{LED} < 25 mA, V _{IN} = 2.5 V to 5.5 V | -7.5 | | +7.5 | % |
| | | 2.5 mA < I _{LED} < 5 mA, V _{IN} = 2.5 V to 5.5 V | -10 | | 10 | % |
| I _{SET} | Voltage reference | R _{SET} = 200 k to 15 k | | 1.28 | | V |
| | Current mirror | I _{LED} / I _{SET} | | 390 | | A/A |
| V _{CSH} | Current source headroom voltage | | | 135 | | mV |

Table 6. Electrical characteristics (continued)

| Symbol | Parameter | Test conditions | Min. | Typ. | Max. | Unit |
|---------------------------|---|---|------|------|------|---------------|
| I_{RIPPLE} | LED peak-to-peak current ripple ⁽¹⁾ ⁽²⁾ | $V_{\text{IN}} = 2.5 \text{ V}$; $I_{\text{LED}} = 20 \text{ mA}$ at all channels, $\text{EN13}_{\text{PWM}} = \text{EN45}_{\text{PWM}}$ | | 500 | | μA |
| | | $V_{\text{IN}} = 2.5 \text{ V}$; $I_{\text{LED}} = 20 \text{ mA}$ at all channels, $\text{EN13}_{\text{PWM}} = \text{EN45}_{\text{PWM}}$ | | 4000 | | |
| PWM_{LIN} | PWM linearity ⁽¹⁾ ⁽²⁾ | 1/255 PWM, 300 Hz, 20 mA on all drivers, $V_{\text{IN}} = 2.5 \text{ V}$ ⁽³⁾ | | | 10 | % |
| | | 25/255 PWM, 300 Hz, 20 mA on all drivers, $V_{\text{IN}} = 2.5 \text{ V}$ ⁽³⁾ | | | 2 | % |
| $I_{\text{LED_LEAK}}$ | LED driver leakage in OFF state | $V_{\text{OUT}} = 7.5 \text{ V}$ | | | 0.5 | μA |
| $I_{\text{LED_MAX}}$ | LED driver max current | | 25 | | | mA |
| Line_tr | Line transient response ⁽¹⁾ | $V_{\text{IN_TR}} = \pm 350 \text{ mV}$, 10 μs step | | 30 | | % |
| f_{DIM} | PWM dimming frequency | | 100 | | 800 | Hz |
| D_{DIM} | Duty cycle of PWM dimming | | 0.39 | | 100 | % |
| Logic inputs | | | | | | |
| R_{EN} | Internal pull-down resistor | | | 100 | | k Ω |
| V_{IL} | EN low-level input voltage | $V_{\text{IN}} = 2.7 \text{ V}$ to 4.5 V | | | 0.68 | V |
| | | $V_{\text{IN}} = 2.3 \text{ V}$ to 5.5 V | | | 0.55 | |
| V_{IH} | EN high-level input voltage | $V_{\text{IN}} = 2.7 \text{ V}$ to 4.5 V | 1.07 | | | V |
| | | $V_{\text{IN}} = 2.3 \text{ V}$ to 5.5 V | 1.14 | | | |
| $I_{\text{LK-I}}$ | EN input leakage current | $V_{\text{EN}} = V_{\text{IN}} = 4.2 \text{ V}$, 100 k internal pulldowns | | 42 | | μA |
| Power switches | | | | | | |
| R_{DSON} | P-channel on resistance | | | 880 | | m Ω |
| | N-channel on resistance | | | 450 | | |
| $I_{\text{LKG-LX}}$ | LX leakage current | $V_{\text{IN}} = V_{\text{LX}} = 4.8 \text{ V}$; $V_{\text{EN}} = 0$ | | | 1 | μA |

1. Not tested in production

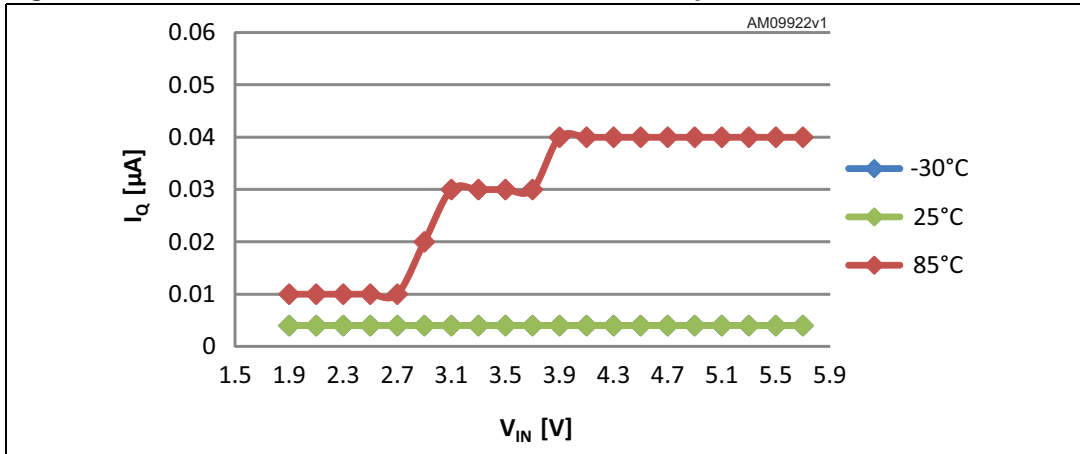
2. 10% value reduction at $V_{\text{IN}} = 2.3 \text{ V}$

3. The PWM linearity is measured on the mean value of the output current in PWM mode in the 100 ms window. The frequency of the PWM is 300 Hz

5 Typical application performance

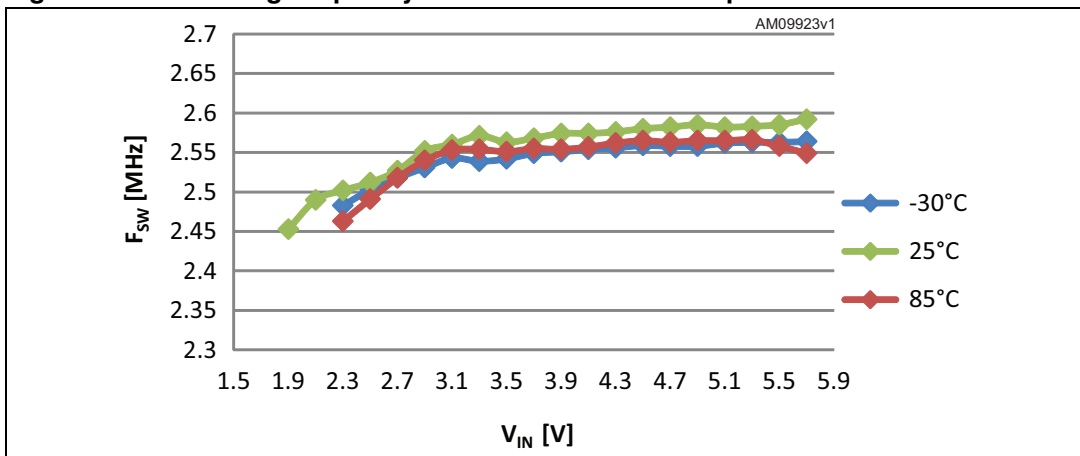
5.1 Quiescent current consumption

Figure 4. Quiescent current at different ambient temperatures



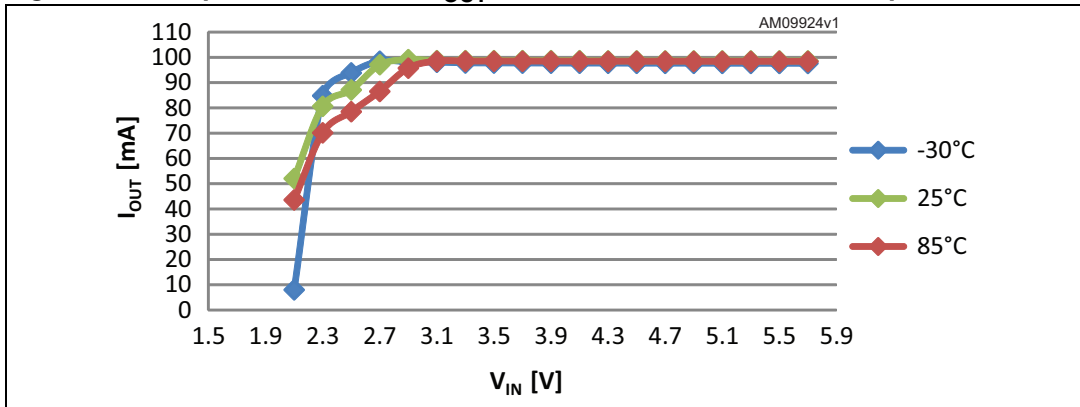
5.2 Switching frequency

Figure 5. Switching frequency at different ambient temperatures



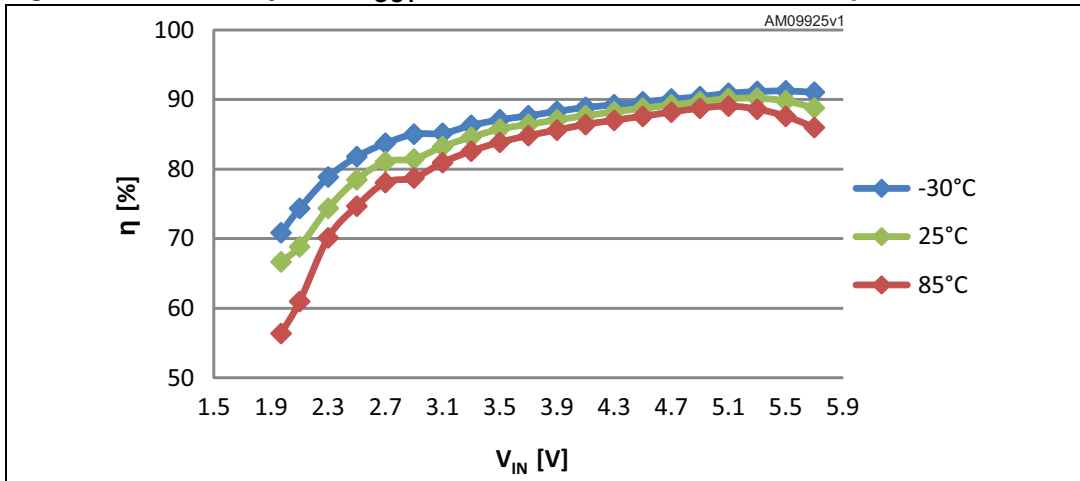
5.3 Continuous output current

Figure 6. Output current when $V_{OUT} = 8.5\text{ V}$ at different ambient temperatures



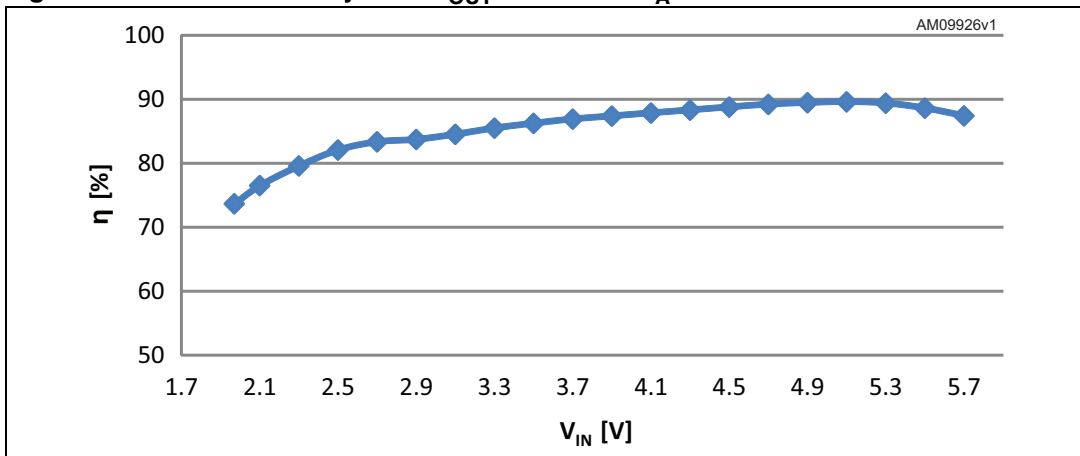
5.4 Efficiency at 100 mA I_{OUT}

Figure 7. Efficiency when $I_{OUT} = 100\text{ mA}$ at different ambient temperatures



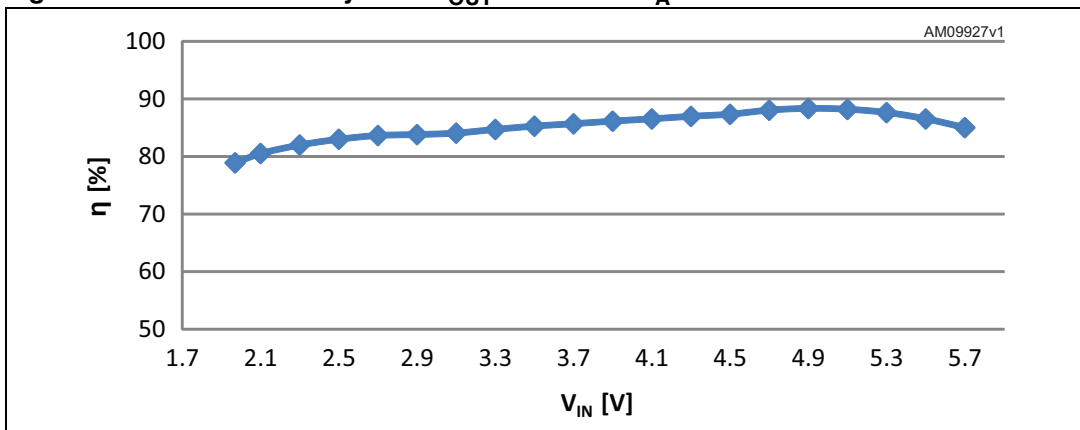
5.5 Efficiency at 75 mA I_{OUT}

Figure 8. APPL efficiency when I_{OUT} = 75 mA at T_A = 25 °C



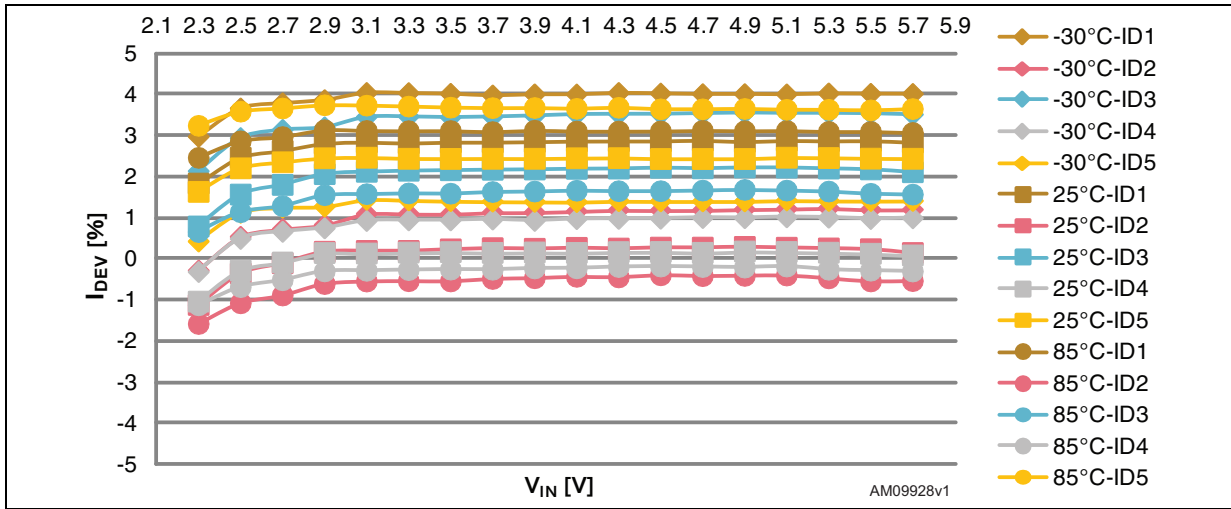
5.6 Efficiency at 50 mA I_{OUT}

Figure 9. APPL efficiency when I_{OUT} = 50 mA at T_A = 25 °C



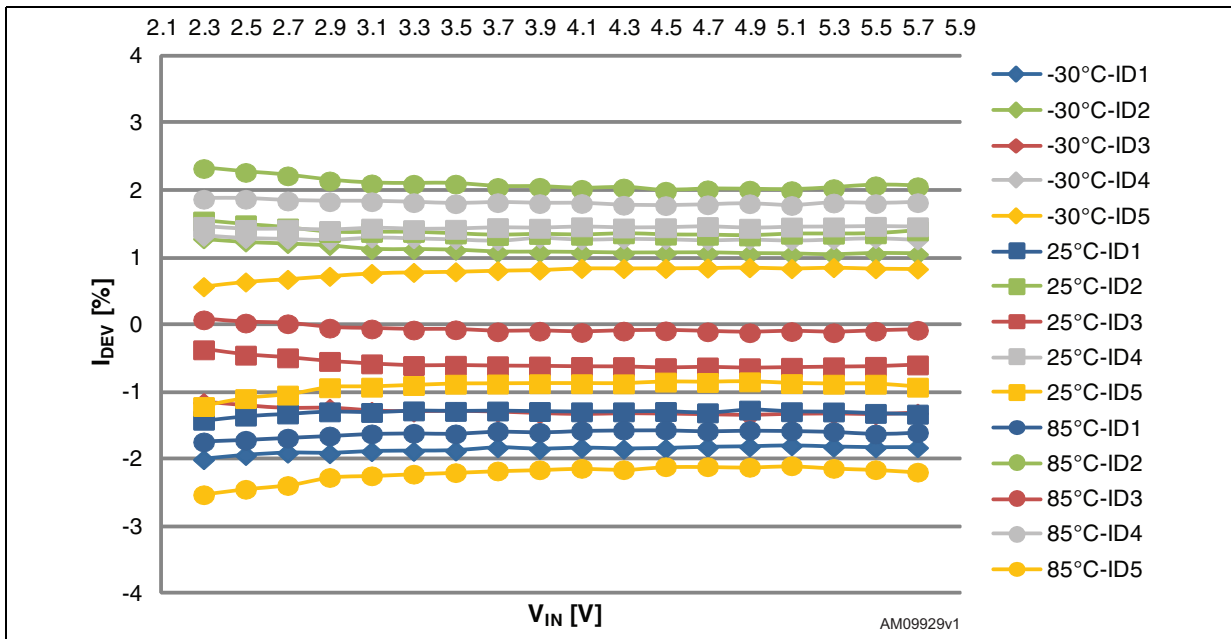
5.7 Absolute channel accuracy

Figure 10. Absolute channel accuracy - set string current to 20 mA



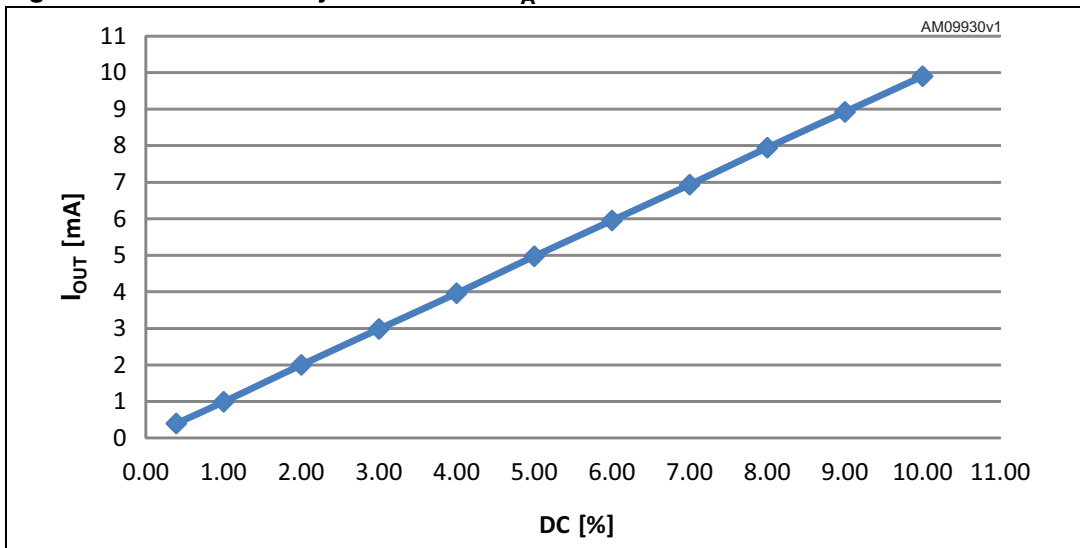
5.8 Current matching between LED strings

Figure 11. Current matching - set string current to 20 mA



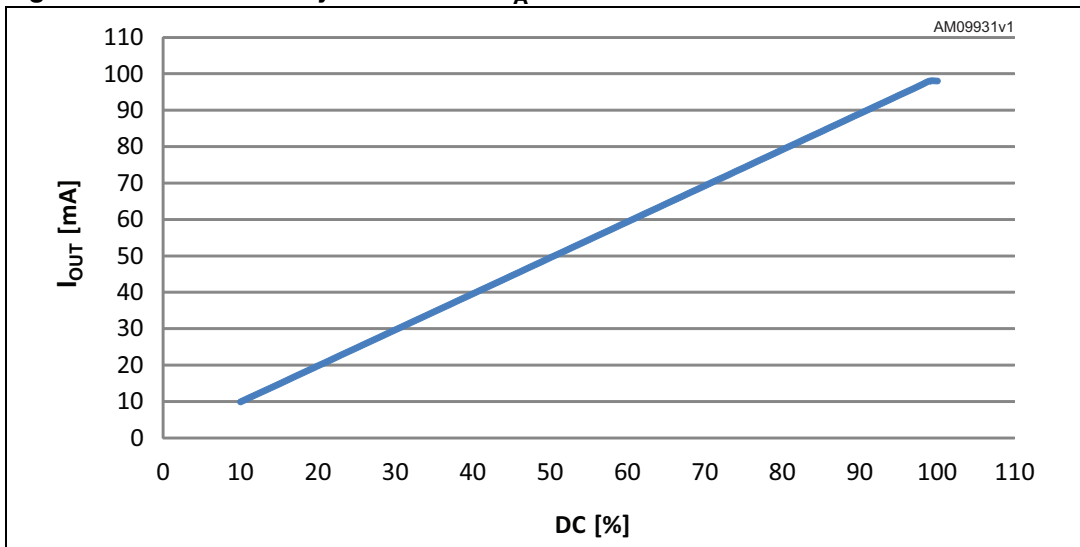
5.9 PWM dimming linearity 0.39 - 10%

Figure 12. PWM linearity 0.39 - 10% at $T_A = 25\text{ }^\circ\text{C}$



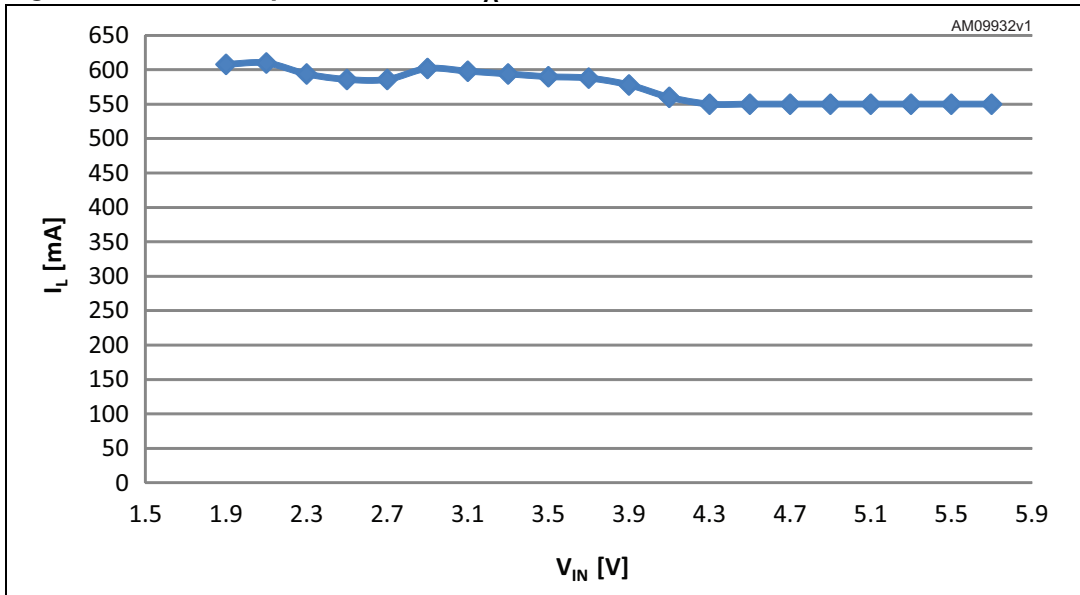
5.10 PWM dimming linearity 10 - 100%

Figure 13. PWM linearity 10 - 100% at $T_A = 25\text{ }^\circ\text{C}$



5.11 Inductor peak current

Figure 14. Inductor peak current at $T_A = 25\text{ }^\circ\text{C}$



5.12 Maximum continues output current

Figure 15. Maximum output current at $T_A = 25\text{ }^\circ\text{C}$

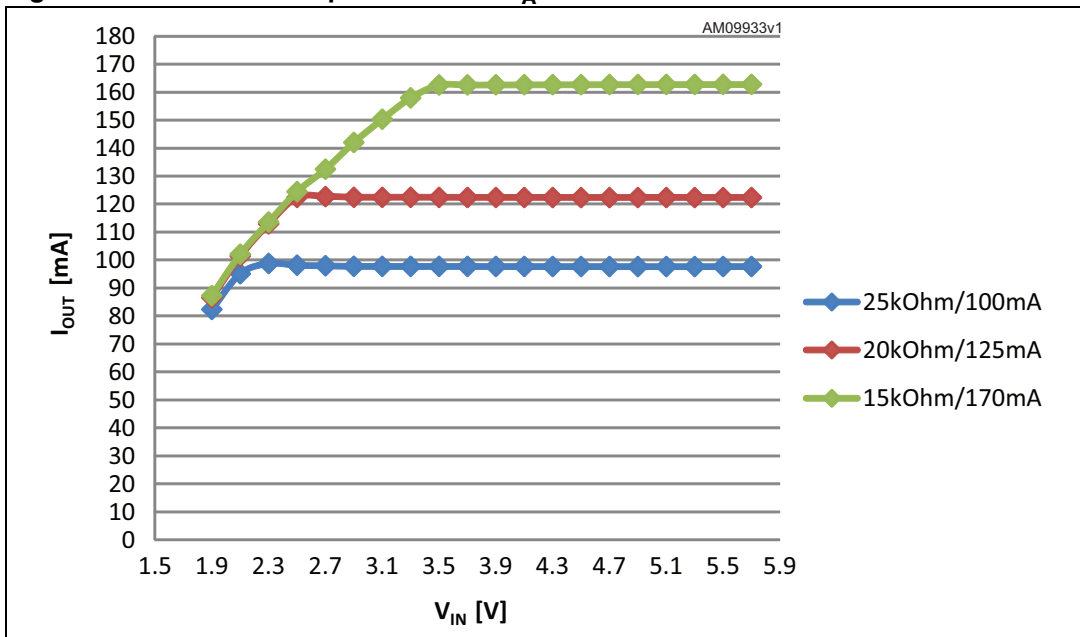


Figure 16. Startup waveform

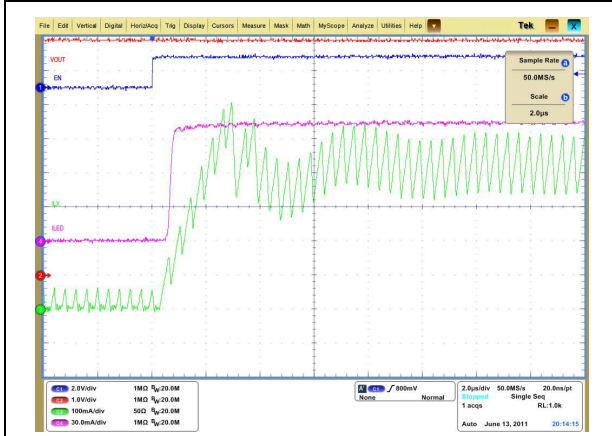


Figure 17. Line transient response

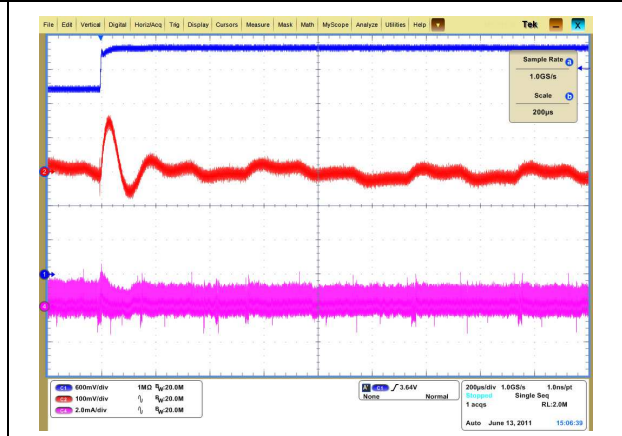
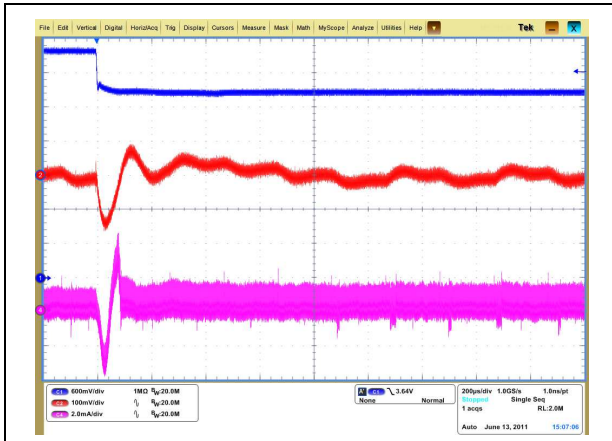


Figure 18. Line transient response



6 Detailed description

The STLED25 is a high efficiency white LED power supply which integrates a step-up converter and 5 high-side current sources. The device is controlled by two enable inputs called EN13 and EN45 according to the labels of the LED channels. EN13 enables LED channels 1, 2, 3 and EN45 enables LED channels 4, 5. The device is protected against shorted LED channels by short LED protection and against open LED channels by open LED protection. The device is able to recognize which channel has failed, and switch off this channel to maintain correct operation of the remaining channels. The STLED25 device is 125 mA total output current capable and works over a battery voltage range of 2.3 V to 5.5 V. The typical output voltage during operation corresponds to the voltage level equal to $V_{\text{FLED}} + 125 \text{ mV}$. The STLED25 device has an optimized switching power bridge to reach a high level of application efficiency (86%) with the typical battery voltage of 3.7 V. The device is also able to work at high efficiency when not all the LED channels of the device are used.

6.1 Boost DC-DC converter operation

The step-up bridge with current mode control of the regulation regulates the output voltage level according to the LED channel with the highest V_{FLED} , in order to maintain sufficient voltage headroom for the related current sources. The typical headroom of the current sources is in the range of 135 mV. The STLED25 contains a current limiter, with a typical value 600 mA, and soft-start control to limit the supply current from the battery. The method of regulation during startup and normal operation is explained in [Section 6.4](#).

6.2 Current setting

Each LED channel regulates to the same current. The value of the LED current is set by choosing the R_{SET} resistor. The current flowing through this resistor is mirrored in order to obtain the LED current. The multiplication factor is 390.

The LED current is calculated with the following formula:

Equation 1

$$I_{\text{LED}} = \frac{V_{\text{SET}}}{R_{\text{SET}}} \times 390$$

where:

$V_{\text{SET}} = 1.28 \text{ V}$ typical

6.3 EN13 and EN45

EN13 and EN45 play the dual role of enable pin and PWM dimming. EN13 drives strings D1, D2, D3 while EN45 drives D4 and D5. Both EN13 and EN45 are pulled down internally by 100 k resistors.

The EN pins accept a signal between 100 Hz and 800 Hz, at duty cycles from 0.39% to 100%. The output average current maximum error is 10% at 0.39%, PWM duty cycle at 300 Hz.

6.4 Modes of operation

Shutdown mode

The device is in shutdown with minimum current consumption. It goes to PWM_start as soon as EN13 or EN45 are pulled high.

PWM_start

Once EN_{xx} is asserted, the DC-DC is turned ON with a soft-start procedure until V_{OUT} reaches 7 V; this phase takes around 1.2 ms.

If EN_{xx} remains asserted, the device will stay in this condition and wait for 10 ms (PWM_start_up), then the STLED25 goes to PWM_normal mode. If the next EN is asserted during the PWM_start_up mode, the device will immediately enable the LED current sources and continue in PWM_normal mode.

PWM_normal

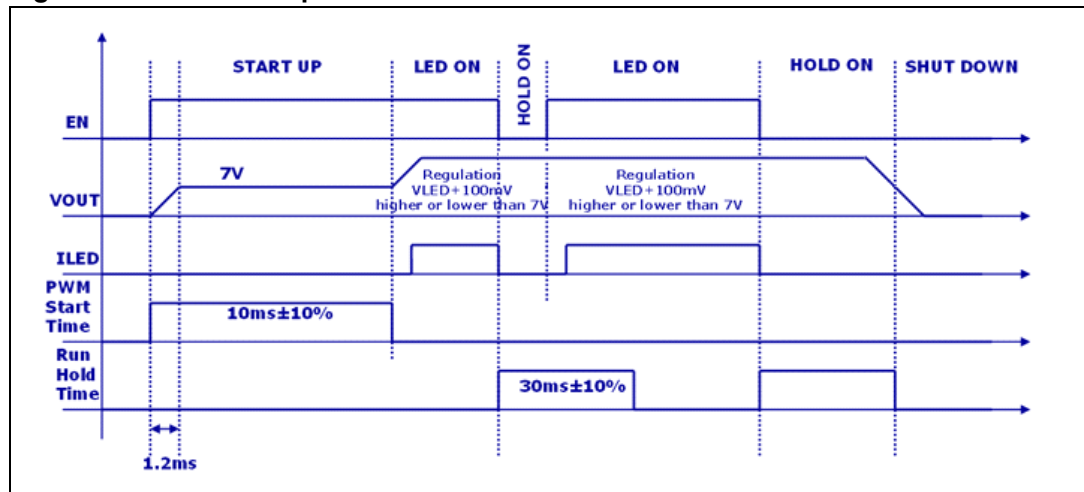
In this mode of operation the drivers are in the ON state delivering current to the LEDs, and the DC-DC converter maintains the V_{OUT} value with enough headroom to keep the high side current sources in regulation.

When both EN pins are low, the drivers are turned off and the RUN_HOLD timer starts.

RUN_hold

The RUN_hold time lasts approximately 30 ms. During this time, the DC-DC converter maintains the last optimum voltage on V_{OUT}. If RUN_hold time elapses without EN reassertion, then the STLED25 goes into shutdown mode. If EN is reasserted, the device goes to PWM_normal mode.

Figure 19. Modes of operation



6.5 Undervoltage lockout

The undervoltage lockout function prevents improper operation of the STLED25 when the input voltage is not high enough. When the input voltage is below the UVLO threshold, the device is in shutdown mode. The hysteresis of 100 mV prevents unstable operation when the input voltage is close to the UVLO threshold.

6.6 Overtemperature protection

An internal temperature sensor continuously monitors the IC junction temperature. If the IC temperature exceeds 150 °C (typical), the device stops operating. As soon as the temperature falls below 135 °C (typical), normal operation is restored.

6.7 Open LED protection

The device is able to detect an “Open LED” failure in each LED channel independently. When this failure appears, the DC-DC increases the output voltage to maintain the current source headroom voltage until the OVP threshold is reached; the device detects which LED channel is the root cause and switches off this LED channel. This state is maintained until the STLED25 goes into shutdown mode.

6.8 Overvoltage protection

The device has overvoltage protection on the V_{OUT} pin to protect the device and external components against the high voltage coming from the DC-DC, in case of a disconnected load. When the output voltage level reaches the OVP threshold (9.3 V typical), the DC-DC is turned off until the output voltage level goes below the OVP threshold. The hysteresis of the OVP threshold is approximately 250 mV.

6.9 Short LED protection

The device is able to detect a shorted LED in each LED channel independently; when the protection detects a failure on any of the LED channels, it switches off this channel until the STLED25 enters shutdown mode.

7 Application information

7.1 External passive components

7.1.1 Inductor selection

The inductor is the key passive component for switching converters.

For the STLED25, an inductance of 4.7 μH is recommended. It is very important to select the right inductor according to the maximum current the inductor can handle to avoid saturation. The peak current for the step-up can be calculated with the following formula:

Equation 2

$$I_{\text{PEAK-BOOST}} = \frac{V_{\text{OUT}} \times I_{\text{OUT}}}{\eta \times V_{\text{IN MIN}}} + \frac{V_{\text{IN MIN}} \times (V_{\text{OUT}} - V_{\text{IN MIN}})}{2 \times V_{\text{OUT}} \times f_s \times L}$$

where:

V_{OUT} : step-up output voltage. The boost control loop keeps it 135 mV higher than the maximum among VD1-D5

I_{OUT} : total output current

V_{IN} : input voltage of STLED25

f_s : switching frequency. Use the minimum value of 2.25 MHz for the worst case

η : efficiency of step-up converter. It is 0.87 at 75 mA load

Table 7. List of recommended inductors

| Manufacturer | Part number | Inductance [μH] | Saturation current [A] | Size [mm] |
|--------------|--------------|------------------------------|------------------------|-----------|
| Samsung | CIG21K4R7SCE | 4.7 | 0.6 | 0805 |
| Murata | LQM21PN4R7 | 4.7 | 0.6 | 0805 |

7.1.2 Input and output capacitor selection

It is recommended to use ceramic capacitors with low ESR as input and output capacitors in order to filter any disturbance present in the input line and to maintain stable operation of the step-up converter. A minimum real capacitance value of 1 μF must be guaranteed for C_{IN} and 4.2 μF C_{OUT} in all conditions.

Table 8. Input and output capacitor

| Manufacturer | Part number | Nominal capacitance [μF] | Rated voltage [V] | TCC | Size [mm] |
|------------------------|-------------------|---------------------------------------|-------------------|-----|-----------|
| C_{IN} | | | | | |
| Murata | GRM155R60J155M | 1.5 | 6.3 | | 0402 |
| Samsung | CL05A225MQ5NSKC | 2.2 | 6.3 | | 0402 |
| C_{OUT} | | | | | |
| Murata | GRM219R61A106ME47 | 10 | 10 | | 0805 |

7.2 Recommended PCB layout

The STLED25 is a high-frequency power switching device, so it requires a proper PCB layout in order to obtain the necessary stability and optimize line/load regulation and output voltage ripple. Input and output capacitors must be as close as possible to their relative pins.

Figure 20. Top layer

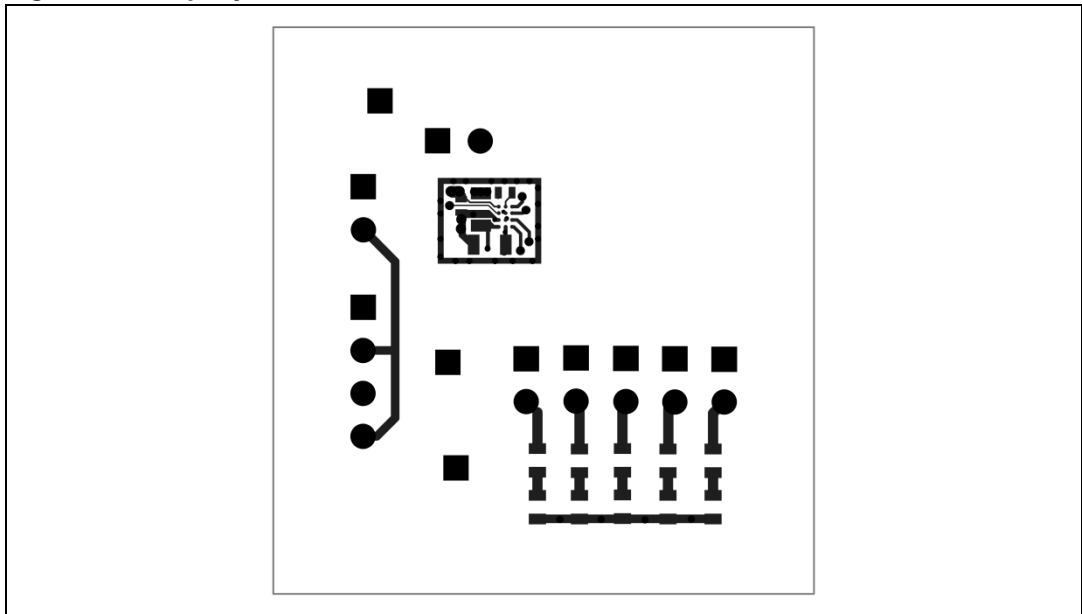


Figure 21. Mid layer 1

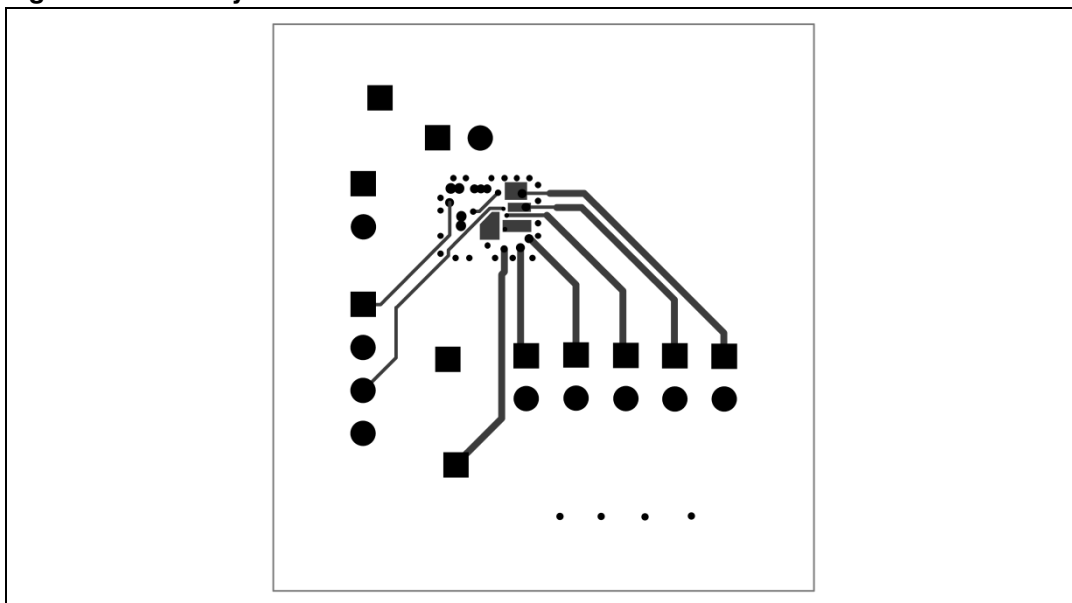


Figure 22. Mid layer 2

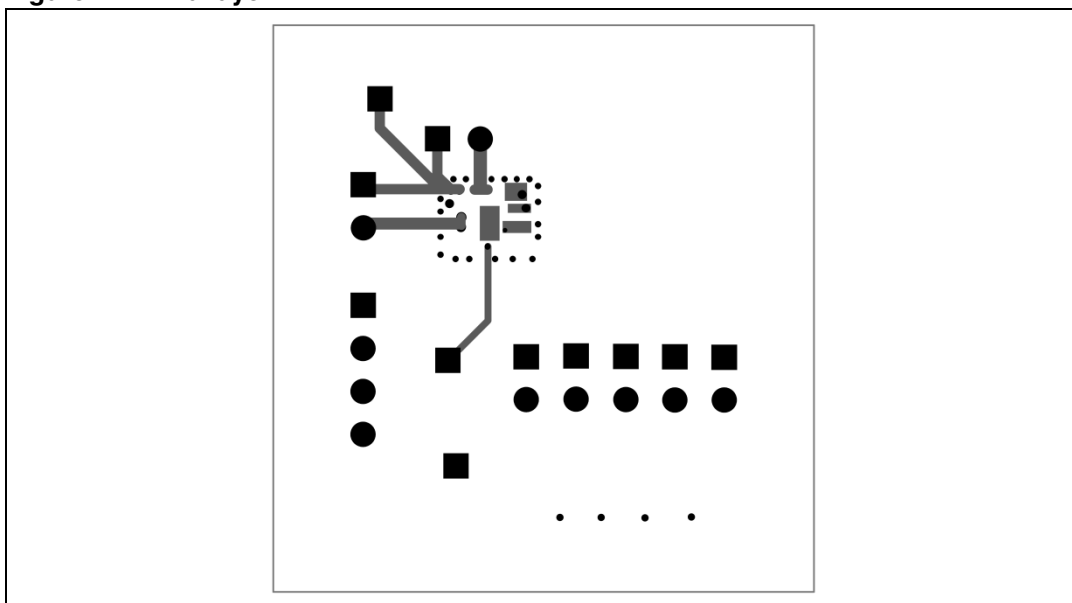


Figure 23. Bottom layer

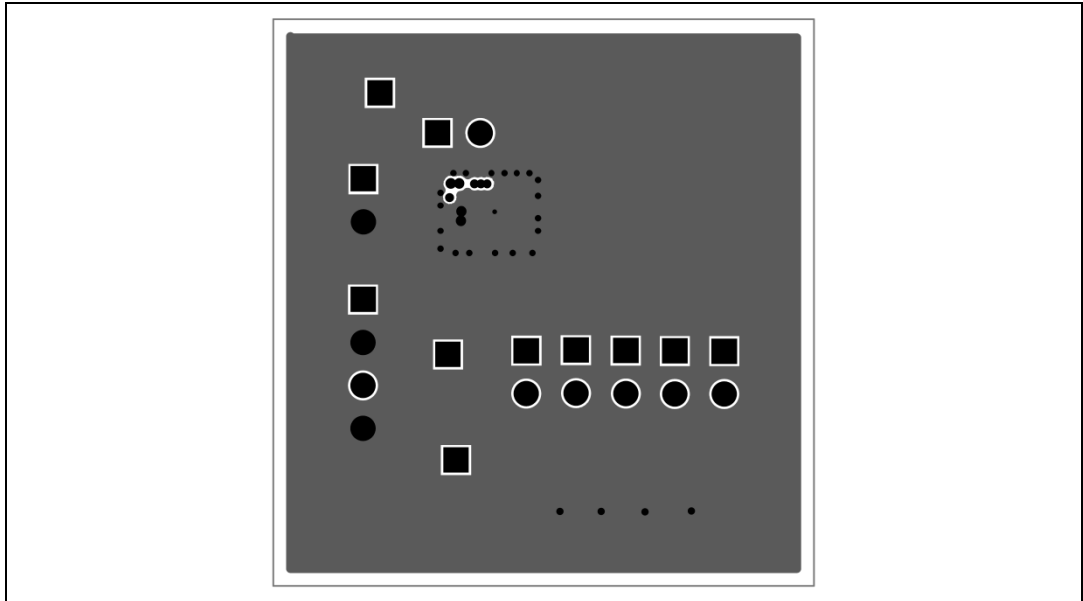


Figure 24. Top overlay

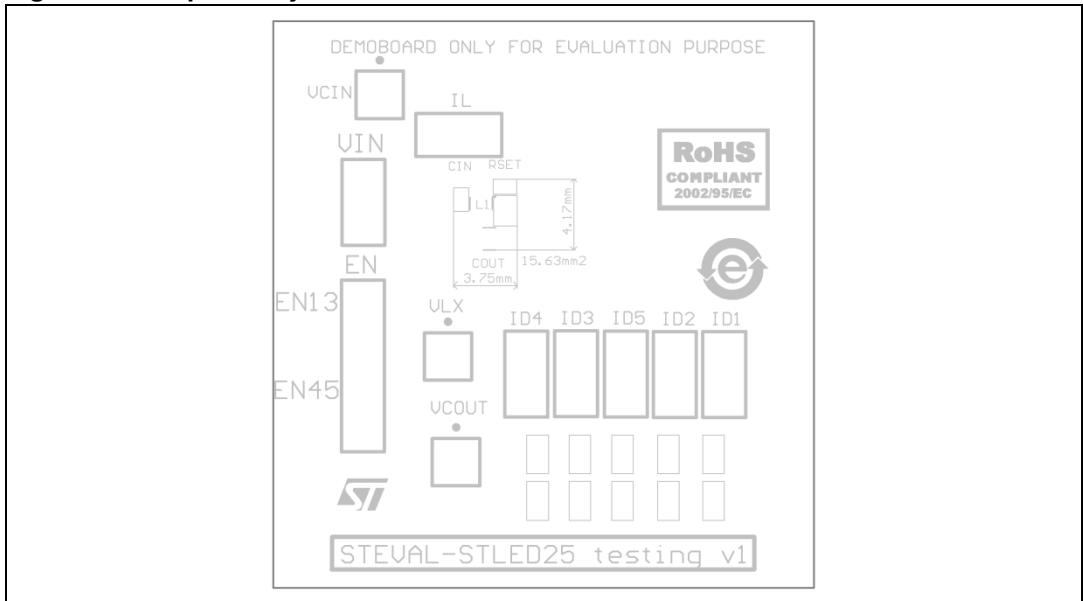
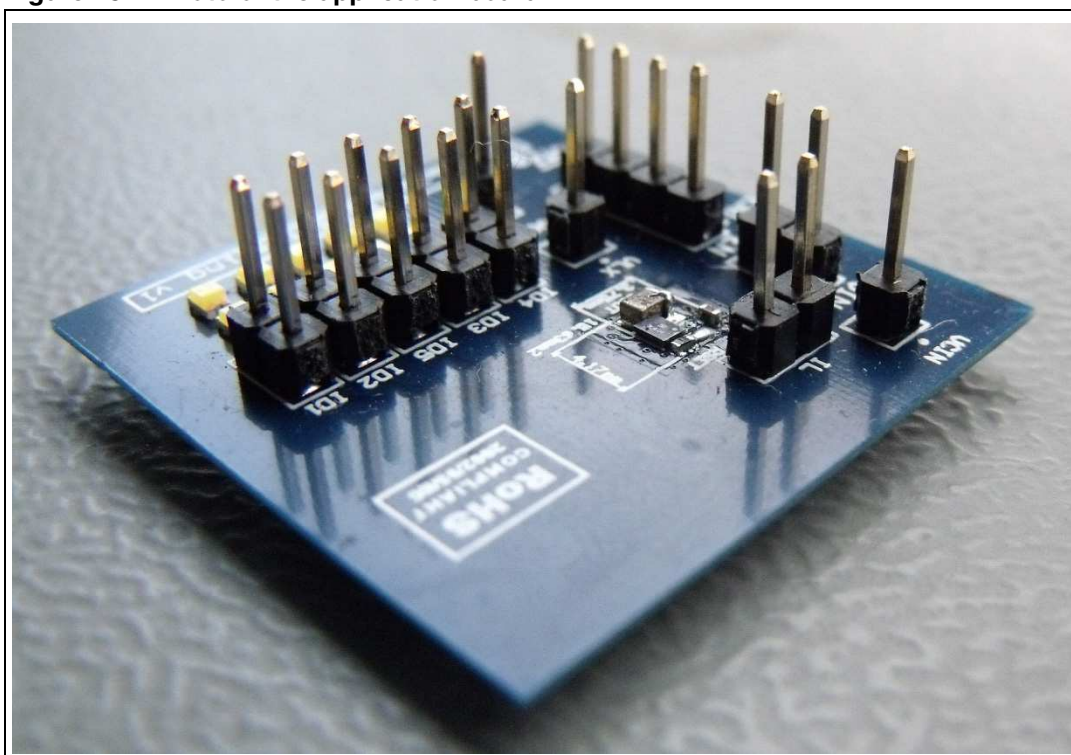


Figure 25. Photo of the application board

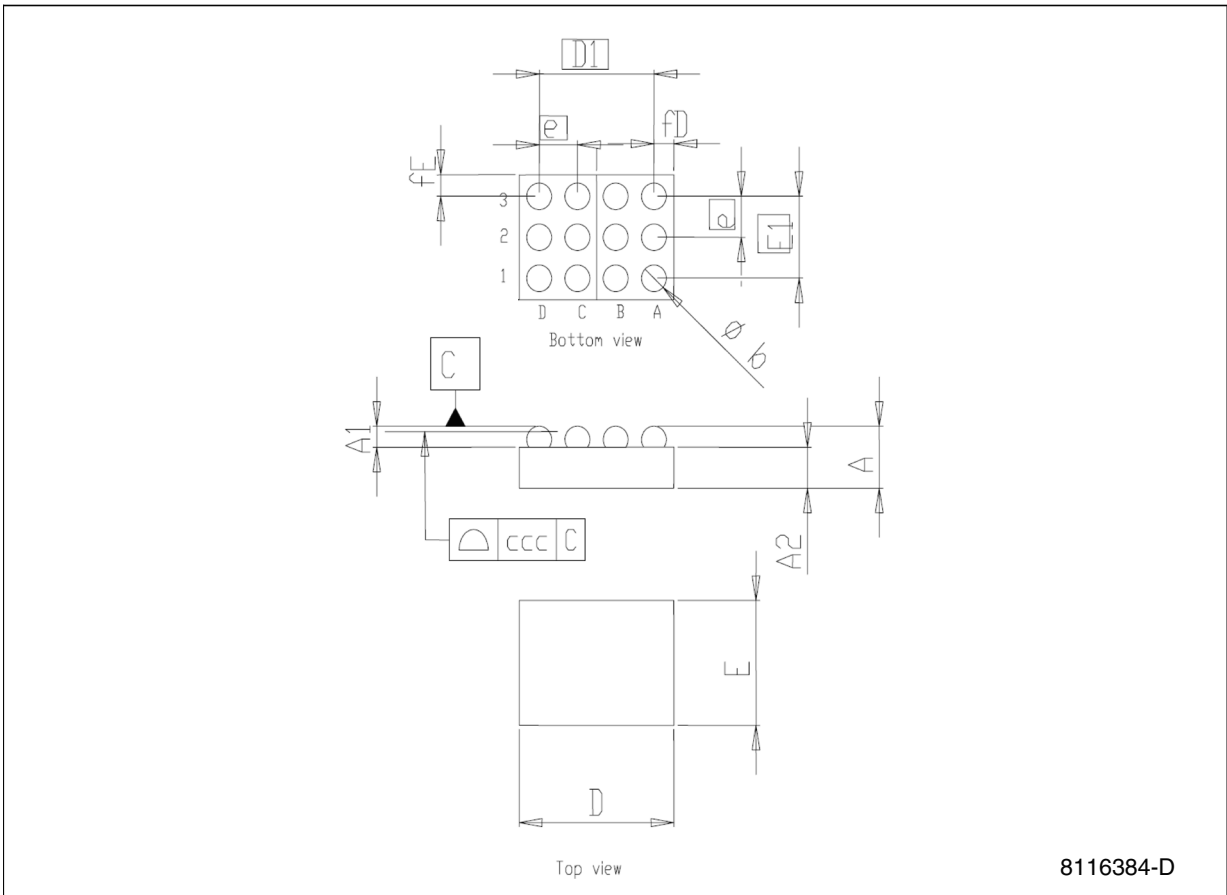


8 Package mechanical data

In order to meet environmental requirements, ST offers these devices in different grades of ECOPACK[®] packages, depending on their level of environmental compliance. ECOPACK[®] specifications, grade definitions and product status are available at: www.st.com. ECOPACK[®] is an ST trademark.

Flip-chip 12 mechanical data

| Dim. | mm. | | |
|------|-------|-------|-------|
| | Min. | Typ. | Max. |
| A | 0.45 | 0.50 | 0.55 |
| A1 | 0.17 | 0.20 | 0.23 |
| A2 | 0.28 | 0.30 | 0.32 |
| b | 0.22 | 0.26 | 0.30 |
| D | 1.815 | 1.845 | 1.875 |
| D1 | | 1.20 | |
| E | 1.358 | 1.388 | 1.418 |
| E1 | | 0.80 | |
| e | 0.36 | 0.40 | 0.44 |
| fD | 0.313 | 0.323 | 0.333 |
| fE | 0.284 | 0.294 | 0.304 |
| ccc | | | 0.05 |



8116384-D

Tape & reel Flip-Chip 12 mechanical data

| Dim. | mm. | | | inch. | | |
|------|------|------|------|-------|-------|-------|
| | Min. | Typ. | Max. | Min. | Typ. | Max. |
| A | | | 180 | | | 7.087 |
| C | 12.8 | | 13.2 | 0.504 | | 0.520 |
| D | 20.2 | | | 0.795 | | |
| N | 60 | | | 2.362 | | |
| T | | | 14.4 | | | 0.567 |
| Ao | 1.46 | 1.51 | 1.56 | 0.057 | 0.059 | 0.061 |
| Bo | 1.89 | 1.94 | 1.99 | 0.074 | 0.076 | 0.078 |
| Ko | 0.54 | 0.59 | 0.64 | 0.021 | 0.023 | 0.025 |
| Po | 3.9 | | 4.1 | 0.154 | | 0.161 |
| P | 3.9 | | 4.1 | 0.154 | | 0.161 |

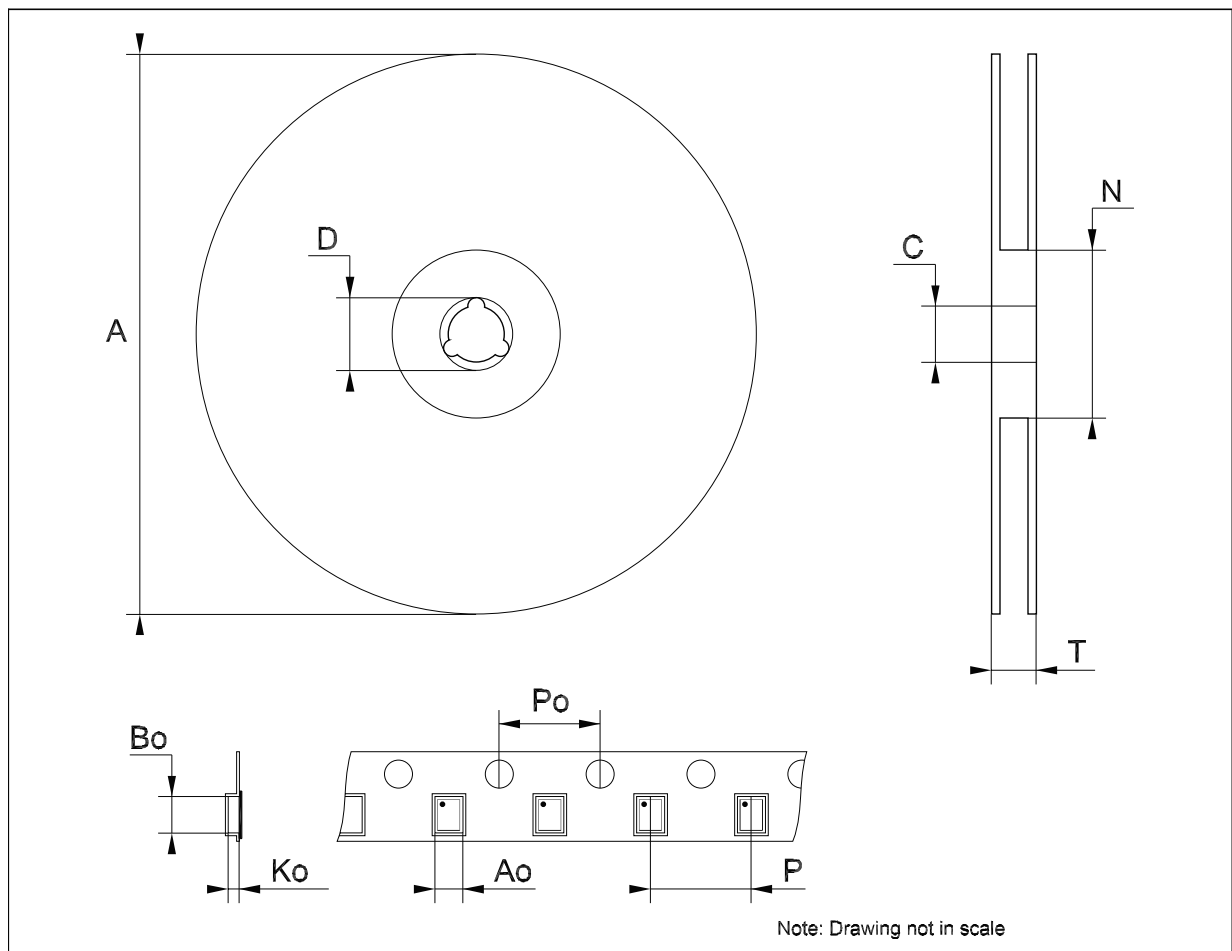
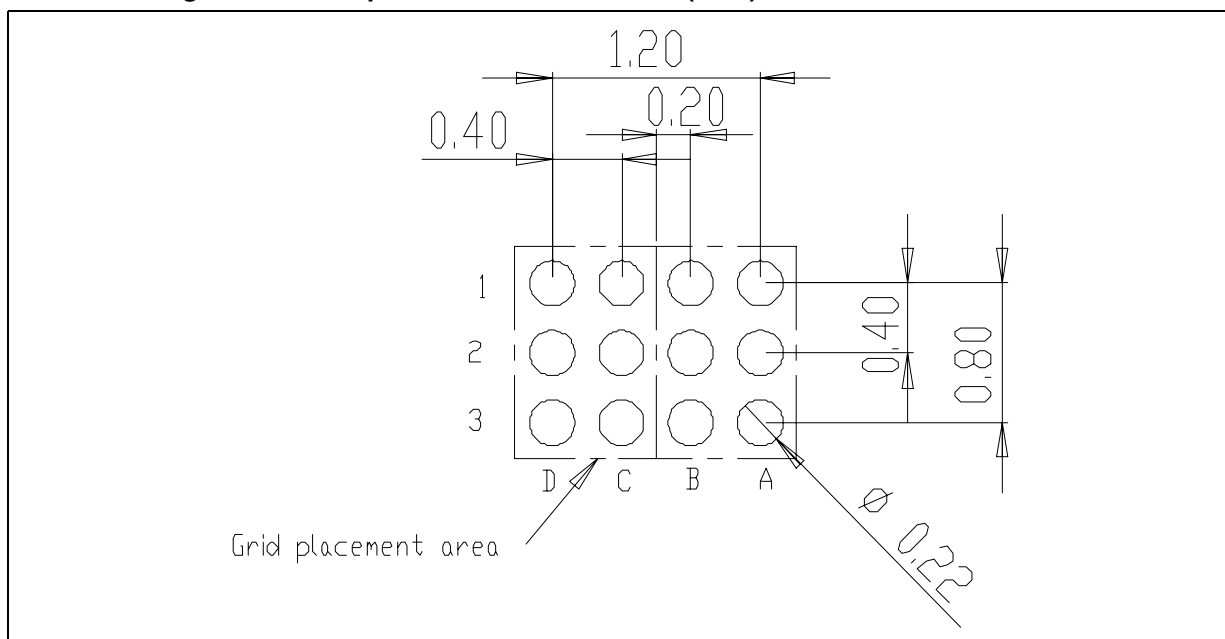


Figure 26. Footprint recommended data (mm.)



9 Revision history

Table 9. Document revision history

| Date | Revision | Changes |
|-------------|----------|---|
| 10-Oct-2011 | 1 | Initial release. |
| 13-Dec-2011 | 2 | Modified: C _{OUT} part number Table 2 on page 4 and Table 8 on page 21 . |
| 11-May-2012 | 3 | Document status promoted from preliminary data to production data. |

Please Read Carefully:

Information in this document is provided solely in connection with ST products. STMicroelectronics NV and its subsidiaries ("ST") reserve the right to make changes, corrections, modifications or improvements, to this document, and the products and services described herein at any time, without notice.

All ST products are sold pursuant to ST's terms and conditions of sale.

Purchasers are solely responsible for the choice, selection and use of the ST products and services described herein, and ST assumes no liability whatsoever relating to the choice, selection or use of the ST products and services described herein.

No license, express or implied, by estoppel or otherwise, to any intellectual property rights is granted under this document. If any part of this document refers to any third party products or services it shall not be deemed a license grant by ST for the use of such third party products or services, or any intellectual property contained therein or considered as a warranty covering the use in any manner whatsoever of such third party products or services or any intellectual property contained therein.

UNLESS OTHERWISE SET FORTH IN ST'S TERMS AND CONDITIONS OF SALE ST DISCLAIMS ANY EXPRESS OR IMPLIED WARRANTY WITH RESPECT TO THE USE AND/OR SALE OF ST PRODUCTS INCLUDING WITHOUT LIMITATION IMPLIED WARRANTIES OF MERCHANTABILITY, FITNESS FOR A PARTICULAR PURPOSE (AND THEIR EQUIVALENTS UNDER THE LAWS OF ANY JURISDICTION), OR INFRINGEMENT OF ANY PATENT, COPYRIGHT OR OTHER INTELLECTUAL PROPERTY RIGHT.

UNLESS EXPRESSLY APPROVED IN WRITING BY TWO AUTHORIZED ST REPRESENTATIVES, ST PRODUCTS ARE NOT RECOMMENDED, AUTHORIZED OR WARRANTED FOR USE IN MILITARY, AIR CRAFT, SPACE, LIFE SAVING, OR LIFE SUSTAINING APPLICATIONS, NOR IN PRODUCTS OR SYSTEMS WHERE FAILURE OR MALFUNCTION MAY RESULT IN PERSONAL INJURY, DEATH, OR SEVERE PROPERTY OR ENVIRONMENTAL DAMAGE. ST PRODUCTS WHICH ARE NOT SPECIFIED AS "AUTOMOTIVE GRADE" MAY ONLY BE USED IN AUTOMOTIVE APPLICATIONS AT USER'S OWN RISK.

Resale of ST products with provisions different from the statements and/or technical features set forth in this document shall immediately void any warranty granted by ST for the ST product or service described herein and shall not create or extend in any manner whatsoever, any liability of ST.

ST and the ST logo are trademarks or registered trademarks of ST in various countries.

Information in this document supersedes and replaces all information previously supplied.

The ST logo is a registered trademark of STMicroelectronics. All other names are the property of their respective owners.

© 2012 STMicroelectronics - All rights reserved

STMicroelectronics group of companies

Australia - Belgium - Brazil - Canada - China - Czech Republic - Finland - France - Germany - Hong Kong - India - Israel - Italy - Japan - Malaysia - Malta - Morocco - Philippines - Singapore - Spain - Sweden - Switzerland - United Kingdom - United States of America

www.st.com