

FEATURES

- Cylindrical leadless type for surface mounting.
- Non-polar, general purpose, 1000 hours at 85°C.
- Maximum 5.5mm height & anti-solvent (2 minutes).
- Designed for automatic mounting and reflow soldering.

PART NUMBERING

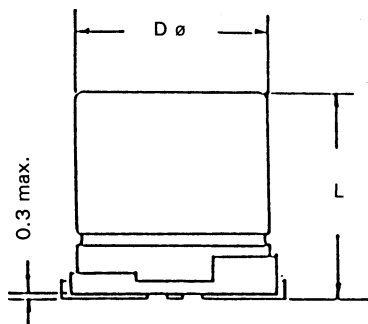
Part Number Example: MXNP-016/100M5X5TR13F									
MXNP	-	016	/	100	M	5X5	TR	13	F
Type		Rated DC Voltage		Capacitance Code (μF)*	Tolerance Code	Size	Package Code**	Reel Size	RoHs Compliant
* Capacitance Code: First two digits represent significant figure, third digit represents multiplier (number of zeros).									
** Package Code: TR = Tape & Reel.									

SPECIFICATIONS

Performance Characteristics							
Operating Temperature Range	-40°C ~ +85°C.						
Temperature Characteristics (120Hz)	Impedance Ratio						
	Rated Voltage (WVDC)	6.3	10	16	25	35	50
	Z (-25°C) / Z (+20°C)	4	3	2	2	2	2
	Z (-40°C) / Z (+20°C)	8	6	4	4	3	3
Voltage Range	6.3VDC ~ 50VDC (nonpolar).						
Capacitance Range	0.1μF ~ 47μF.						
Capacitance Tolerance	±20% (m).						
Maximum Dissipation Factor (20°C, 120Hz)	Rated Voltage (WVDC)	6.3	10	16	25	35	50
	DF %	24	20	17	17	15	15
Maximum Leakage Current (20°C) (after 2 minutes)	0.05CV or 10μA, whichever is greater.						
Load Life Test (85°C, 1000 hours) (reverse polarity every 250 hours)	Capacitance Change	Within ±25% of initial measured value.					
	DF	Less than 200% of specific value.					
	Leakage Current	Less than specified value.					

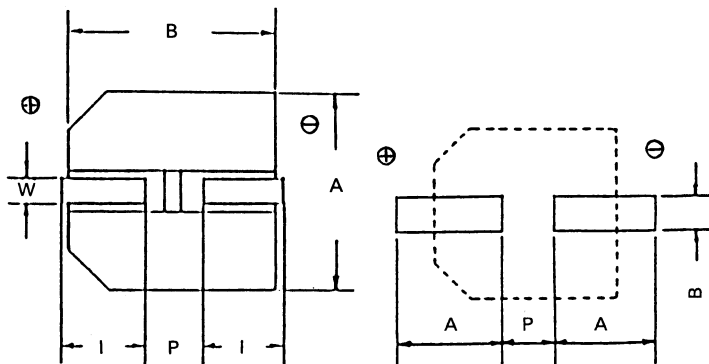
STANDARD PRODUCT TABLE (dø X L(mm))

Capacitance (μF)	WVDC					
	6.3	10	16	25	35	50
0.10						4 x 5.5
0.22						4 x 5.5
0.33						4 x 5.5
0.47						4 x 5.5
1.0						4 x 5.5
2.2					4 x 5.5	5 x 5.5
3.3				5 x 5.5	5 x 5.5	5 x 5.5
4.7			4 x 5.5	5 x 5.5	5 x 5.5	6.3 x 5.5
10		4 x 5.5	5 x 5.5	6.3 x 5.5	6.3 x 5.5	6.3 x 5.5
22	5 x 5.5	6.3 x 5.5	6.3 x 5.5			
33	6.3 x 5.5	6.3 x 5.5	6.3 x 5.5			
47	6.3 x 5.5					



DIMENSIONS (mm)

Case Size	d \varnothing \pm 0.5	L Max.	A \pm 0.2	B \pm 0.2	l \pm 0.2	W	P \pm 0.2
4 x 5.5	4	5.5	4.3	4.3	1.8	0.5 ~ 0.8	1
5 x 5.5	5	5.5	5.3	5.3	2.1	0.5 ~ 0.8	1.4
6.3 x 5.5	6.3	5.5	6.6	6.6	2.5	0.5 ~ 0.8	2.2



RECOMMENDED LAND PATTERN

Case Size	A	B	P
4 x 5.5	2.5	1.6	1.0
5 x 5.5	2.7	1.6	1.4
6.3 x 5.5	3.1	1.6	2.2

MAXIMUM RIPPLE (mA rms @ 120Hz & 105°C)

Capacitance (μ F)	WVDC					
	6.3	10	16	25	35	50
0.10						1.0
0.22						2.0
0.33						2.8
0.47						4.0
1.0						8.4
2.2					8.4	13
3.3				12	16	17
4.7			12	16	18	20
10		17	23	27	29	23
22	28	33	37			
33	37	41	49			
47	45					