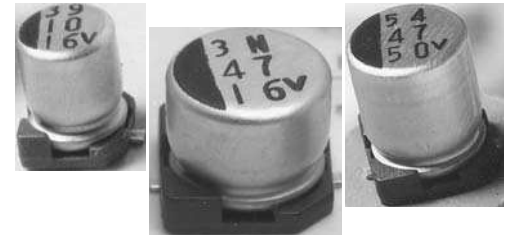


FEATURES

- Cylindrical leadless type for surface mounting.
- Low profile 4.5mm height max.
- Wide temperature (-40°C to +85°C).
- Solvent resistant (2 minutes).
- Designed for automatic mounting and reflow soldering.



PART NUMBERING

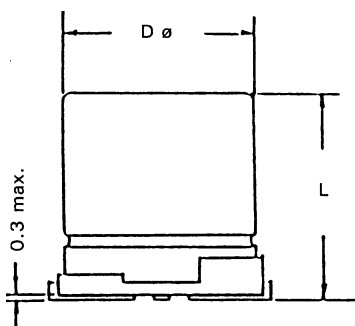
Part Number Example: MXLP-016/100M4X5TR13F									
MXLP	-	016	/	100	M	4X5	TR	13	F
Type		Rated DC Voltage		Capacitance Code (μF)*	Tolerance Code	Size	Package Code**	Reel Size	RoHs Compliant
* Capacitance Code: First two digits represent significant figure, third digit represents multiplier (number of zeros).									
** Package Code: TR = Tape & Reel.									

SPECIFICATIONS

Performance Characteristics							
Operating Temperature Range	-40°C ~ +85°C.						
Temperature Characteristics (120Hz)	Impedance Ratio						
	Rated Voltage (WVDC)	4	6.3	10	16	25	35
	Z (-40°C) / Z (+20°C)	7	4	3	2	2	2
	Z (-55°C) / Z (+20°C)	15	10	8	6	4	4
Voltage Range	4VDC ~ 50VDC.						
Surge Voltage (20°C, 120Hz)	VDC	5	8.0	13	20	32	44
Capacitance Range	0.47μF ~ 220μF.						
Capacitance Tolerance	±20%.						
Maximum Dissipation Factor (20°C, 120Hz)	Rated Voltage (WVDC)	4	6.3	10	16	25	35
	DF %	40	30	24	20	16	14
Maximum Leakage Current (20°C) (after 2 minutes)	0.01CV or 3μA, whichever is greater.						
Load Life Test (85°C, 1000 hours)	Capacitance Change	Within ±25% of initial measured value.					
	DF	Less than 200% of specific value.					
	Leakage Current	Less than specified value.					

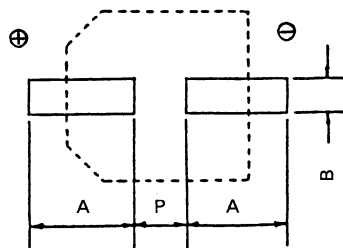
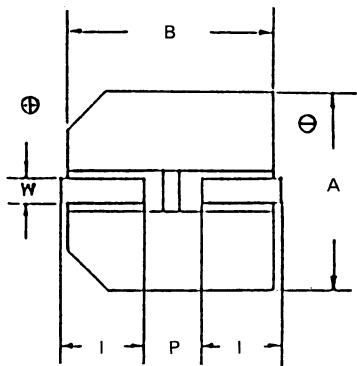
STANDARD PRODUCT TABLE (dØ X L(mm))

Capacitance (μF)	WVDC						
	4	6.3	10	16	25	35	50
0.47							4 x 4.5
1							4 x 4.5
2.2							4 x 4.5
3.3							4 x 4.5
4.7					4 x 4.5	4 x 4.5	5 x 4.5
10				4 x 4.5	5 x 4.5	5 x 4.5	6.3 x 4.5
22		4 x 4.5	5 x 4.5	5 x 4.5	6.3 x 4.5	6.3 x 4.5	
33	4 x 4.5	5 x 4.5	5 x 4.5	6.3 x 4.5	6.3 x 4.5		
47	4 x 4.5	5 x 4.5	6.3 x 4.5	6.3 x 4.5			
100	5 x 4.5	6.3 x 4.5					
220	6.3 x 4.5						



DIMENSIONS (mm)

Case Size	dØ ± 0.5	L Max.	A ± 0.2	B ± 0.2	1 ± 0.2	W	P ± 0.2
4 x 4.5	4.0	4.5	4.3	4.3	1.8	0.5 ~ 0.8	1.0
5 x 4.5	5.0	4.5	5.3	5.3	2.1	0.5 ~ 0.8	1.4
6.3 x 4.5	6.3	4.5	6.6	6.6	2.5	0.5 ~ 0.8	2.2



RECOMMENDED LAND PATTERN (mm)

Case Size	A	B	P
4 x 4.5	2.5	1.6	1.0
5 x 4.5	2.7	1.6	1.4
6.3 x 4.5	3.1	1.6	2.2

MAXIMUM RIPPLE (mA rms @ 120Hz & 105°C)

Cap. (µF)	WVDC						
	4	6.3	10	16	25	35	50
0.47							4
1.0							8.4
2.2							14
3.3							17
4.7					17	18	21
10				23	27	29	33
22		28	33	37	47	49	
33	28	37	41	51	57		
47	33	45	58	61			
100	56	70					
220	96						

MAXIMUM ESR (Ω @ 120Hz & 20°C)

Cap. (µF)	WVDC						
	4	6.3	10	16	25	35	50
0.47							423
1.0							199
2.2							90.5
3.3							60.3
4.7					56.5	49.4	42.3
10				33.2	28.5	23.2	19.9
22		22.6	18.1	15.1	12.1	10.6	
33	20.1	15.1	12.6	10.1	8.1		
47	14.1	10.6	8.5	7.1			
100	6.6	5					
220	3						