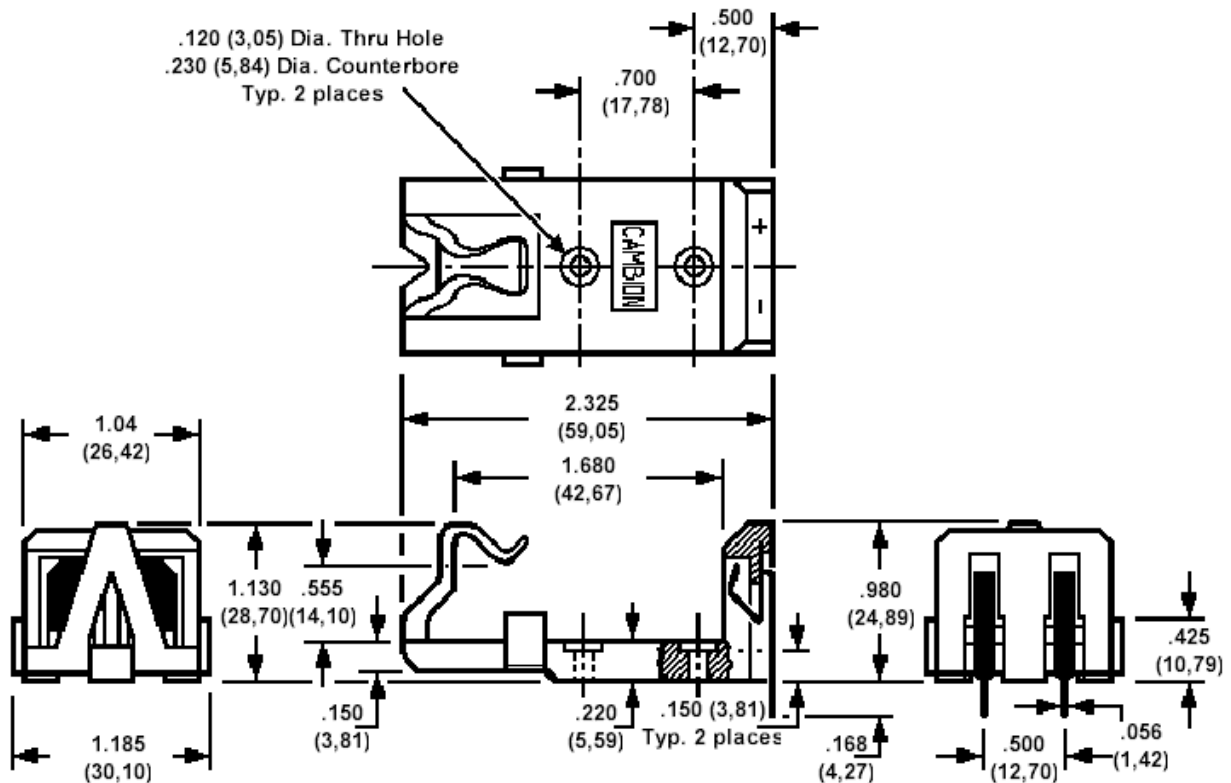


400-1803, "PP3" size Battery Holder - PC mount



Rec. Mounting Holes - .062 (1,57) Dia., on pitch of 0.500 (12,70) centres, plus bolt down holes per drawing
 Suited for use on boards up to .125 (3,18) thick

How to order code
400-1803-01-00-20
 Basic Part No

FEATURES	
Single Piece Construction	
Requires No Snap on Battery Connection	
Shockproof Battery Retention	

BATTERY INSERTION/REMOVAL PROCEDURE	
Insertion	Pull back moulded clip part of holder, and slide flat end of battery down into the holder. Drop contact end of battery into position, and release clip
Removal	Pull back moulded clip part of holder, and lift battery out of holder, contact end first.

Component	Material	Finish
Body	PBT	Colour - Natural
Spring and Solder Tail	Phosphor Bronze	Electro Tin

Mechanical tolerance unless otherwise stated $\pm .010(0,25)$