



NPN 2N3227

SILICON ANNULAR TRANSISTORS

The 2N3227 are silicon NPN silicon annular transistors for low-current, high-speed switching applications.

They are mounted in Jedec TO-18 metal.

Compliance to RoHS

ABSOLUTE MAXIMUM RATINGS

Symbol	Ratings		Value	Unit
V_{CBO}	Collector-Base Voltage		40	V
V_{CEO}	Collector-Emitter Voltage		20	V
V_{EBO}	Emitter-Base Voltage		6	V
V_{CES}	Collector-Emitter Voltage		40	V
$I_{C(peak)}$	Collector Current		500	mA
P_D	Total Device Dissipation Ambient Temperature	@ $T_C = 25^\circ$	0.36	Watts
	Derating Factor Above		2.06	mW/°C
P_D	Total Device Dissipation Case Temperature	@ $T_C = 25^\circ$	1.2	Watts
	Derating Factor Above		6.85	mW/°C
T_J	Junction Temperature		+200	°C
T_{Stg}	Storage Temperature range		-65 to +200	

NPN 2N3227

ELECTRICAL CHARACTERISTICS

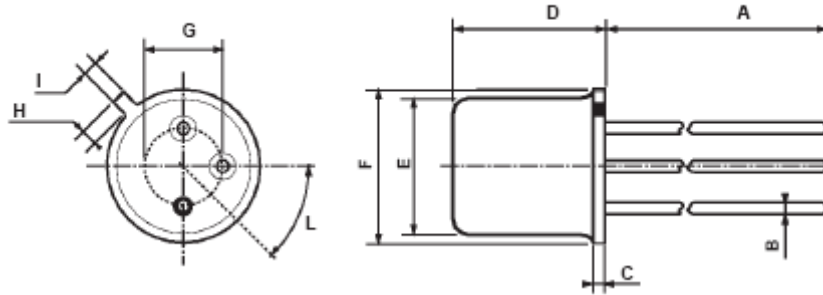
TC=25°C unless otherwise noted

Symbol	Ratings	Test Condition(s)	Min	Typ	Max	Unit
I_{CBO}	Collector cut-off current	$I_E = 0 ; V_{CB} = 20V$	-	-	0.2	μA
		$I_E = 0 ; V_{CB} = 20V$ $T_A = 150^\circ C$	-	-	50	
		$V_{CE} = 20V ; V_{EB(off)} = 3V$	-	-	0.2	
I_{BL}	Base cut-off current	$V_{CE} = 20V ; V_{EB(off)} = 3V$	-	-	0.5	
BV_{CBO}	Collector-Base Breakdown voltage	$I_C = 10 \mu A ; I_B = 0$	40	-	-	V
BV_{EBO}	Emitter-Base Breakdown voltage	$I_E = 10 \mu A ; I_C = 0$	6	-	-	V
BV_{CEO}	Collector-Emitter Breakdown voltage	$I_C = 10 mA$	20	-	-	V
BV_{CES}	Collector-Emitter voltage	$I_C = 10 \mu A ; I_B = 0$	40	-	-	V
$V_{CE(SAT)}$	Collector-Emitter saturation Voltage	$I_C = 10 mA, I_B = 1.0 mA$	-	-	0.25	V
		$I_C = 100 mA, I_B = 10 mA$	-	-	0.45	
$V_{BE(SAT)}$	Base-Emitter saturation Voltage	$I_C = 10 mA, I_B = 1.0 mA$	-	-	0.85	V
		$I_C = 100 mA, I_B = 10 mA$	-	-	1.4	
h_{FE}	DC Current Gain	$V_{CE} = 1.0 V, I_C = 10 mA$	100	-	300	-
		$V_{CE} = 1.0 V, I_C = 10 mA$ $T_A = -55^\circ C$	40	-	-	
		$V_{CE} = 1.0 V, I_C = 100 mA$	30	-	-	
h_{fe}	Small Signal Current Gain	$V_{CE} = 10 V, I_C = 10 mA$ $f = 100 MHz$	5	-	-	-
t_s	Storage time	$I_C = I_{B1} = I_{B2} = 10 mA$	-	-	13	Ns
T_{off}	Turn-off time	$I_C = 10 A ; I_{B1} = 3 mA ;$ $I_{B2} = 1.5 mA ; V_{CC} = 3.0 V$	-	-	18	
t_{on}	Turn-on time	$I_C = 10 A ; I_{B1} = 3 mA$ $V_{CC} = 3.0 V, V_{EB(off)} = 1.5 V$	-	-	12	
C_{ob}	Output Capacitance	$V_{CB} = 5 V ; I_E = 0$, $f = 140 kHz$	-	-	4.0	pF
C_{ib}	Input Capacitance	$V_{BE} = 1 V ; I_C = 0$, $f = 140 kHz$	-	-	4.0	pF

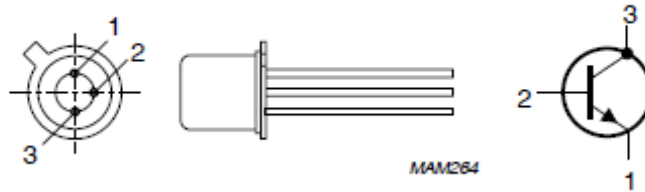
NPN 2N3227

MECHANICAL DATA CASE TO-18

DIMENSIONS (mm)		
	min	max
A	12.7	-
B	-	0.49
C	0.9	-
D	-	5.3
E	-	4.9
F	-	5.8
G	2.54	-
H	-	1.2
I	-	1.16
L	45°	-



Pin 1 :	emitter
Pin 2 :	base
Pin 3 :	Collector
Case :	Collector



Revised September 2012

Information furnished is believed to be accurate and reliable. However, Comset Semiconductors assumes no responsibility for the consequences of use of such information nor for any infringement of patents or other rights of third parties which may result from its use. Data are subject to change without notice. Comset Semiconductors makes no warranty, representation or guarantee regarding the suitability of its products for any particular purpose, nor does Comset Semiconductors assume any liability arising out of the application or use of any product and specifically disclaims any and all liability, including without limitation consequential or incidental damages. Comset Semiconductors' products are not authorized for use as critical components in life support devices or systems.