



**BUZ22**

**SIPMOS<sup>®</sup> POWER TRANSISTORS**

**FEATURE**

- Nchannel
- Enhancement mode
- Avalanche-rated
- TO-220 envelope
- Compliance to RoHS.

**ABSOLUTE MAXIMUM RATINGS**

Symbol	Ratings	Value	Unit
$V_{DS}$	Drain-Source Voltage	100	V
$I_D$	Continuous Drain Current $T_C= 27^{\circ}C$	34	A
$I_{Dpuls}$	Pulsed Drain Current $T_C= 25^{\circ}C$	136	
$I_{AR}$	Avalanche Current, Limited by $T_{jmax}$	34	
$E_{AR}$	Avalanche Energy, Periodic Limited by $T_{jmax}$	15	mJ
$E_{AS}$	Avalanche Energy, Single pulse $I_D = 34\text{ A}, V_{DD} = 25\text{ V}, R_{GS} = 25\ \Omega$ $L = 285.5\ \mu\text{H}, T_j = 25^{\circ}C$	220	
$V_{GS}$	Gate-Source Voltage	20	V
$R_{DS(on)}$	Drain-Source on Resistance	0.055	$\Omega$
$P_T$	Power Dissipation $T_C= 25^{\circ}C$	125	W
$t_J$	Operating Temperature	-55 to +150	$^{\circ}C$
$t_{stg}$	Storage Temperature range	-55 to +150	

**THERMAL CHARACTERISTICS**

Symbol	Ratings	Value	Unit
$R_{thJC}$	Thermal Resistance, chip case	<1	K/W
$R_{thJA}$	Thermal Resistance, chip to ambient	<75	

## BUZ22

### ELECTRICAL CHARACTERISTICS

TC=25°C unless otherwise noted

Symbol	Ratings	Test Condition(s)	Min	Typ	Max	Unit
$V_{DSS}$	Drain-Source Breakdown Voltage	$I_D = 250 \mu A, V_{GS} = 0 V$	100	-	-	V
$V_{GS(th)}$	Gate-threshold Voltage	$I_D = 1 mA, V_{GS} = V_{DS}$	2.1	3	4	V
$I_{DSS}$	Zero Gate Voltage Drain Current	$V_{DS} = 100 V, V_{GS} = 0 V$ $T_j = 25^\circ C$	-	0.1	1	$\mu A$
		$V_{DS} = 100 V, V_{GS} = 0 V$ $T_j = 125^\circ C$	-	10	100	
$I_{GSS}$	Gate-Source leakage Current	$V_{GS} = 20 V, V_{DS} = 0 V$	-	10	100	nA
$R_{DS(on)}$	Drain-Source on Resistance	$I_D = 22 A, V_{GS} = 10 V$	-	0.05	0.055	$\Omega$

### DYNAMIC CHARACTERISTICS

Symbol	Ratings	Test Condition(s)	Min	Typ	Max	Unit
$g_{fs}$	Transconductance	$V_{DS} > 2 * I_D * R_{DS(on)max}$ $I_D = 22 A$	10	17.5	-	S
$C_{ISS}$	Input Capacitance	$V_{GS} = 0 V, V_{DS} = 25 V$ $f = 1 MHz$	-	1400	1850	$\mu F$
$C_{OSS}$	Output Capacitance		-	450	700	
$C_{RSS}$	Reverse transfer Capacitance		-	230	370	
$t_{d(on)}$	Turn-on Delay Time	$V_{DD} = 30 V, V_{GS} = 10 V$ $I_D = 3 A, R_{GS} = 50 \Omega$	-	20	30	ns
$t_r$	Rise time		-	80	120	
$t_{d(off)}$	Turn-off Delay Time		-	230	300	
$t_f$	Fall Time		-	120	160	

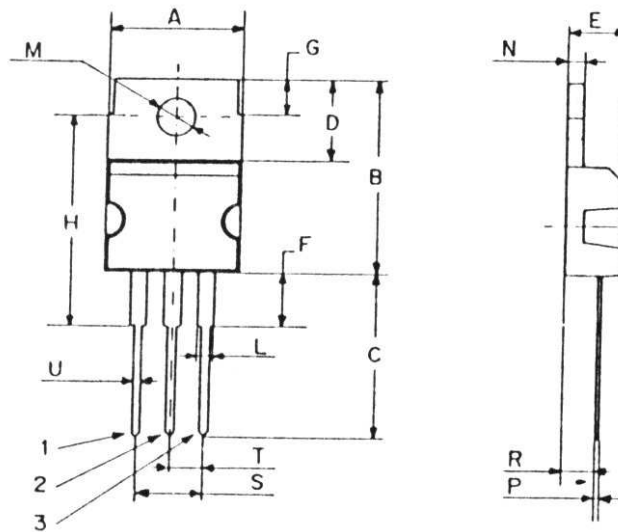
### REVERSE DIODE

Symbol	Ratings	Test Condition(s)	Min	Typ	Max	Unit
$I_S$	Inverse Diode Continuous Forward Current.	$T_C = 25^\circ C$	-	-	34	A
$I_{SM}$	Inverse diode direct current, pulsed.	$T_C = 25^\circ C$	-	-	136	
$V_{SD}$	Inverse Diode Forward voltage	$V_{GS} = 0 V, I_F = 68 A$	-	1.4	1.8	V
$T_{rr}$	Reverse Recovery Time	$V_R = 30 V, I_F = I_S$ $di_F/dt = 100 A/\mu s$	-	130	-	ns
$Q_{rr}$	Reverse Recovery Charge		-	0.7	-	$\mu C$

## BUZ22

### MECHANICAL DATA CASE TO-220

DIMENSIONS (mm)		
	Min.	Max.
A	9,90	10,30
B	15,65	15,90
C	13,20	13,40
D	6,45	6,65
E	4,30	4,50
F	2,70	3,15
G	2,60	3,00
H	15,75	17,15
L	1,15	1,40
M	3,50	3,70
N	-	1,37
P	0,46	0,55
R	2,50	2,70
S	4,98	5,08
T	2,49	2,54
U	0,70	0,90



Pin 1 :	Gate
Pin 2 :	Drain
Pin 3 :	Source

Revised October 2014

Information furnished is believed to be accurate and reliable. However, Comset Semiconductors assumes no responsibility for the consequences of use of such information nor for any infringement of patents or other rights of third parties which may result from its use. Data are subject to change without notice. Comset Semiconductors makes no warranty, representation or guarantee regarding the suitability of its products for any particular purpose, nor does Comset Semiconductors assume any liability arising out of the application or use of any product and specifically disclaims any and all liability, including without limitation consequential or incidental damages. Comset Semiconductors' products are not authorized for use as critical components in life support devices or systems.