



BUZ41A

SIPMOS[®] POWER TRANSISTORS

FEATURE

- Nchannel
- Enhancement mode
- Avalanche-rated
- TO-220 envelope
- Compliance to RoHS.

ABSOLUTE MAXIMUM RATINGS

Symbol	Ratings	Value	Unit
V_{DS}	Drain-Source Voltage	500	V
I_D	Continuous Drain Current $T_C= 36^\circ\text{C}$	4.5	A
I_{Dpuls}	Pulsed Drain Current $T_C= 25^\circ\text{C}$	18	
I_{AR}	Avalanche Current, Limited by T_{imax}	4.5	
E_{AR}	Avalanche Energy, Periodic Limited by T_{imax}	8	mJ
E_{AS}	Avalanche Energy, Single pulse $I_D = 4.5 \text{ A}, V_{DD} = 50 \text{ V}, R_{GS} = 25 \Omega$ $L = 28.4 \text{ H}, T_j = 25^\circ\text{C}$	320	
V_{GS}	Gate-Source Voltage	20	V
$R_{DS(on)}$	Drain-Source on Resistance	1.5	Ω
P_T	Power Dissipation $T_C= 25^\circ\text{C}$	75	W
t_j	Operating Temperature	-55 to +150	$^\circ\text{C}$
t_{stg}	Storage Temperature range	-55 to +150	

THERMAL CHARACTERISTICS

Symbol	Ratings	Value	Unit
R_{thJC}	Thermal Resistance, chip case	<1.67	K/W
R_{thJA}	Thermal Resistance, chip to ambient	<75	

BUZ41A

ELECTRICAL CHARACTERISTICS

TC=25°C unless otherwise noted

Symbol	Ratings	Test Condition(s)	Min	Typ	Max	Unit
V_{DSS}	Drain-Source Breakdown Voltage	$I_D = 250 \mu A, V_{GS} = 0 V$	500	-	-	V
$V_{GS(th)}$	Gate-threshold Voltage	$I_D = 1 mA, V_{GS} = V_{DS}$	2.1	3	4	V
I_{DSS}	Zero Gate Voltage Drain Current	$V_{DS} = 500 V, V_{GS} = 0 V$ $T_j = 25^\circ C$	-	0.1	1	μA
		$V_{DS} = 500 V, V_{GS} = 0 V$ $T_j = 125^\circ C$	-	10	100	
I_{GSS}	Gate-Source leakage Current	$V_{GS} = 20 V, V_{DS} = 0 V$	-	10	100	nA
$R_{DS(on)}$	Drain-Source on Resistance	$I_D = 3 A, V_{GS} = 10 V$	-	1.3	1.5	Ω

DYNAMIC CHARACTERISTICS

Symbol	Ratings	Test Condition(s)	Min	Typ	Max	Unit
g_{fs}	Transconductance	$V_{DS} > 2 * I_D * R_{DS(on)max}$ $I_D = 3 A$	2.5	4.3	-	S
C_{ISS}	Input Capacitance	$V_{GS} = 0 V, V_{DS} = 25 V$ $f = 1 MHz$	-	850	1300	μF
C_{OSS}	Output Capacitance		-	100	150	
C_{RSS}	Reverse transfer Capacitance		-	40	60	
$t_{d(on)}$	Turn-on Delay Time	$V_{DD} = 30 V, V_{GS} = 10 V$ $I_D = 2.6 A, R_{GS} = 50 \Omega$	-	15	20	ns
t_r	Rise time		-	50	70	
$t_{d(off)}$	Turn-off Delay Time		-	140	190	
t_f	Fall Time		-	50	70	

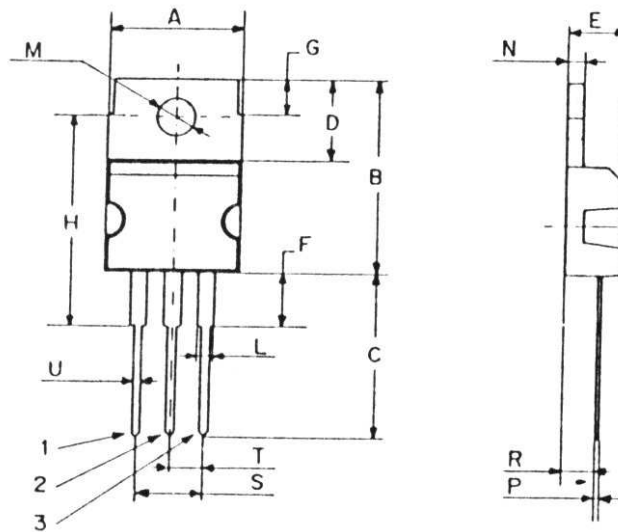
REVERSE DIODE

Symbol	Ratings	Test Condition(s)	Min	Typ	Max	Unit
I_S	Inverse Diode Continuous Forward Current.	$T_C = 25^\circ C$	-	-	4.5	A
I_{SM}	Inverse diode direct current, pulsed.	$T_C = 25^\circ C$	-	-	18	
V_{SD}	Inverse Diode Forward voltage	$V_{GS} = 0 V, I_F = 9 A$	-	1	1.2	V
T_{rr}	Reverse Recovery Time	$V_R = 100 V, I_F = I_S$ $di_F/dt = 100 A/\mu s$	-	350	-	ns
Q_{rr}	Reverse Recovery Charge		-	3	-	μC

BUZ41A

MECHANICAL DATA CASE TO-220

DIMENSIONS (mm)		
	Min.	Max.
A	9,90	10,30
B	15,65	15,90
C	13,20	13,40
D	6,45	6,65
E	4,30	4,50
F	2,70	3,15
G	2,60	3,00
H	15,75	17,15
L	1,15	1,40
M	3,50	3,70
N	-	1,37
P	0,46	0,55
R	2,50	2,70
S	4,98	5,08
T	2,49	2,54
U	0,70	0,90



Pin 1 :	Gate
Pin 2 :	Drain
Pin 3 :	Source

Revised October 2014

Information furnished is believed to be accurate and reliable. However, Comset Semiconductors assumes no responsibility for the consequences of use of such information nor for any infringement of patents or other rights of third parties which may result from its use. Data are subject to change without notice. Comset Semiconductors makes no warranty, representation or guarantee regarding the suitability of its products for any particular purpose, nor does Comset Semiconductors assume any liability arising out of the application or use of any product and specifically disclaims any and all liability, including without limitation consequential or incidental damages. Comset Semiconductors' products are not authorized for use as critical components in life support devices or systems.