

BDX18 – BDX18N

PNP SILICON TRANSISTOR EPITAXIAL BASE

LF Large Signal Power Amplification
 High Current Switching
 Thermal Fatigue Inspection
 Compliance to RoHS

Applications :

- Series and shunt regulators
- High Fidelity Amplifiers
- Power-switching circuits
- Solenoid drivers

ABSOLUTE MAXIMUM RATINGS

Symbol	Ratings		Value	Unit	
V_{CEO}	Collector-Emitter Voltage		BDX18	-60	V
			BDX18N		
V_{CER}	Collector-Emitter Voltage	$R_{BE}=100\Omega$	BDX18	-70	V
			BDX18N	-65	
V_{EBO}	Collector-Emitter Voltage		BDX18	-7	V
			BDX18N		
V_{CBO}	Emitter-Base Voltage		BDX18	-100	V
			BDX18N	-70	
V_{CEX}	Collector-Emitter Voltage	$V_{BE}=+1.5\text{ V}$	BDX18	-90	V
			BDX18N	-70	
I_C	Collector Current		BDX18	-15	A
			BDX18N		
I_B	Base Current		BDX18	-7	A
			BDX18N		
P_T	Power Dissipation	@ $T_C = 25^\circ$	117	W	
T_J	Junction Temperature		-65 to +200	°C	
T_S	Storage Temperature				

BDX18 – BDX18N

THERMAL CHARACTERISTICS

Symbol	Ratings	Value	Unit
R_{thJ-C}	Thermal Resistance, Junction to Case	1.5	°C/W

ELECTRICAL CHARACTERISTICS

TC=25°C unless otherwise noted

Symbol	Ratings	Test Condition(s)	Min	Typ	Max	Unit	
$V_{CEO(SUS)}$	Collector-Emitter Breakdown Voltage (*)	$I_C=200\text{ mA}$	BDX18	-60	-	-	V
		$I_B=0$	BDX18N	-60	-	-	
$V_{CEX(SUS)}$	Collector-Emitter Breakdown Voltage (*)	$I_C=-100\text{ mA}$	BDX18	-90	-	-	V
		$V_{BE}=1.5\text{ V}$	BDX18N	-70	-	-	
$V_{CER(SUS)}$	Collector-Emitter Breakdown Voltage (*)	$I_C=-200\text{ mA}$	BDX18	-70	-	-	V
		$R_{BE}=100\ \Omega$	BDX18N	-65	-	-	
I_{CEX}	Collector-Emitter Cutoff Current	$V_{CE}=-90\text{ V}$	BDX18	-	-	-5	mA
		$V_{BE}=1.5\text{ V}$		-	-	-10	
		$V_{CE}=-60\text{ V}, V_{BE}=1.5\text{ V}$	BDX18N	-	-	-5	
		$T_{CASE}=150^\circ\text{C}$		-	-	-10	
I_{EBO}	Emitter-Base Cutoff Current	$V_{EB}=-7\text{ V}$	BDX18	-	-	-5	mA
			BDX18N	-	-	-5	
V_{BE}	Base-Emitter Voltage (*)	$I_C=-4.0\text{ A}, V_{CE}=-4.0\text{ V}$	BDX18	-	-	-1.8	V
			BDX18N	-	-	-1.8	
$V_{CE(SAT)}$	Collector-Emitter Saturation Voltage	$I_C=-4.0\text{ A}, I_B=-0.4\text{ V}$	BDX18	-	-	-1.1	V
			BDX18N	-	-	-1.1	
f_T	Transition Frequency	$I_C=-1\text{ A}, V_{CE}=-10\text{ V}$ $f=1\text{ MHz}$	BDX18	-	4	-	MHz
			BDX18N	-	4	-	
h_{21E}	Static Forward Current Transfer Ratio (*)	$V_{CE}=-4.0\text{ V}, I_C=-4.0\text{ A}$	BDX18	20	-	70	-
			BDX18N	20	-	70	

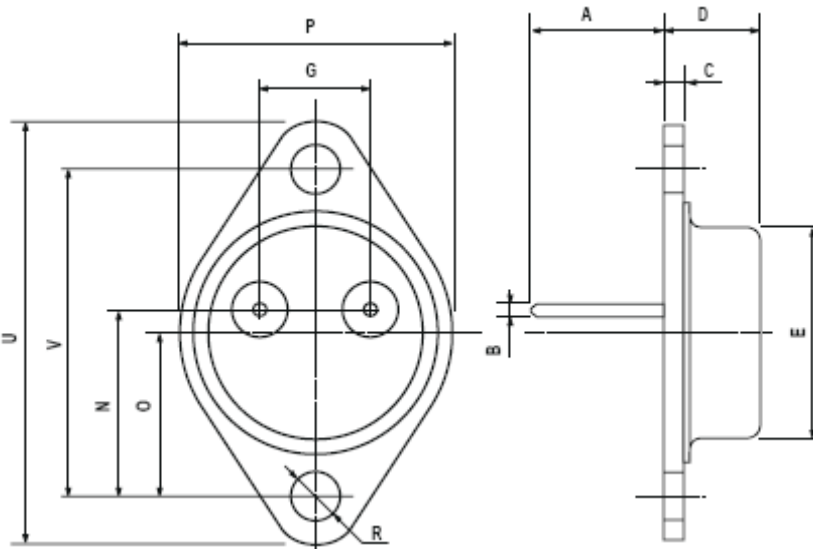
(*) Pulse Width $\approx 300\ \mu\text{s}$, Duty Cycle $\angle 2.0\%$

(1) collector-Emitter voltage limited et $V_{CECl} = V_{\text{rated}}$ by an auxiliary circuit

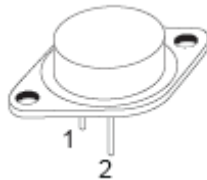
BDX18 – BDX18N

MECHANICAL DATA CASE TO-3

DIMENSIONS (mm)		
	min	max
A	11	13.10
B	0.97	1.15
C	1.5	1.65
D	8.32	8.92
F	19	20
G	10.70	11.1
N	16.50	17.20
P	25	26
R	4	4.09
U	38.50	39.30
V	30	30.30



Pin 1 :	Base
Pin 2 :	Emitter
Case :	Collector



Revised August 2012

Information furnished is believed to be accurate and reliable. However, Comset Semiconductors assumes no responsibility for the consequences of use of such information nor for any infringement of patents or other rights of third parties which may result from its use. Data are subject to change without notice. Comset Semiconductors makes no warranty, representation or guarantee regarding the suitability of its products for any particular purpose, nor does Comset Semiconductors assume any liability arising out of the application or use of any product and specifically disclaims any and all liability, including without limitation consequential or incidental damages. Comset Semiconductors' products are not authorized for use as critical components in life support devices or systems.