



PNP BDX20

SILICON TRANSISTORS EPITAXIAL BASE

The BDX20 are mounted in TO-3 metal package.
 LF Large Signal Power Amplification
 High Current Fast Switching
 Thermal Fatigue Inspection
 Compliance to RoHS.

ABSOLUTE MAXIMUM RATINGS

Symbol	Ratings	Value	Unit
V_{CBO}	Collector to Base Voltage	-60	V
V_{CEO}	Collector-Emitter Voltage	-140	V
V_{CEX}	Collector-Emitter Voltage	$V_{BE}=1.5\text{ V}$	V
V_{EBO}	Emitter-Base Voltage	-7	V
I_C	Collector Current – Continuous	-10	A
I_B	Base Current – Continuous	-7	A
P_{TOT}	Total Device Dissipation	117	W
T_J	Junction Temperature	200	°C
T_s	Storage Temperature	-65 to +200	°C

THERMAL CHARACTERISTICS

Symbol	Ratings	Value	Unit
R_{thJC}	Thermal Resistance, Junction to Case	1.5	°C/W

PNP BDX20

ELECTRICAL CHARACTERISTICS

TC=25°C unless otherwise noted

Symbol	Ratings	Test Condition(s)	Min	Typ	Max	Unit
$V_{CE(SUS)}$	Collector-Emitter Sustaining Voltage (*)	$I_C=-200\text{ mA}, I_B=0$	-140	-	-	V
V_{CEX}	Collector-Emitter Breakdown Voltage (*)	$I_C=-100\text{ mA}, V_{BE}=1.5\text{ V}$	-160	-	-	V
I_{CEX}	Collector Cutoff Current	$V_{CE}=-140\text{ V}, V_{BE}=1.5\text{ V}$	-	-	-1.0	mA
		$V_{CE}=-140\text{ V}, V_{BE}=1.5\text{ V}$ $T_{CASE}=150^\circ\text{C}$	-	-	-10	
I_{CBO}	Collector-Base Cutoff Current	$V_{CB}=-140\text{ V}, I_E=0$	-	-	-1.0	mA
I_{EBO}	Emitter-Base Cutoff Current	$V_{BE}=-7.0\text{ V}, I_C=0$	-	-	-5.0	mA
h_{21E}	Static Forward Current Transfer Ratio (*)	$I_C=-3\text{ A}, V_{CE}=-4\text{ V}$	20	-	70	-
		$I_C=10\text{ A}, V_{CE}=-4\text{ V}$	-	10	-	
$V_{CE(SAT)}$	Collector-Emitter Saturation Voltage (*)	$I_C=-3\text{ A}, I_B=-0.3\text{ A}$	-	-	-1.0	V
		$I_C=-10\text{ A}, I_B=-2\text{ A}$	-	-	-5.0	
V_{BE}	Base-Emitter Voltage (*)	$I_C=-3\text{ A}, V_{CE}=-4\text{ V}$	-	-1.7	-	V
		$I_C=-10\text{ A}, V_{CE}=-4\text{ V}$	-	-5.7	-	
f_T	Transition Frequency	$V_{CE}=-10\text{ V}, I_C=-1\text{ A}$ $f=1.0\text{ MHz}$	4	-	-	MHz

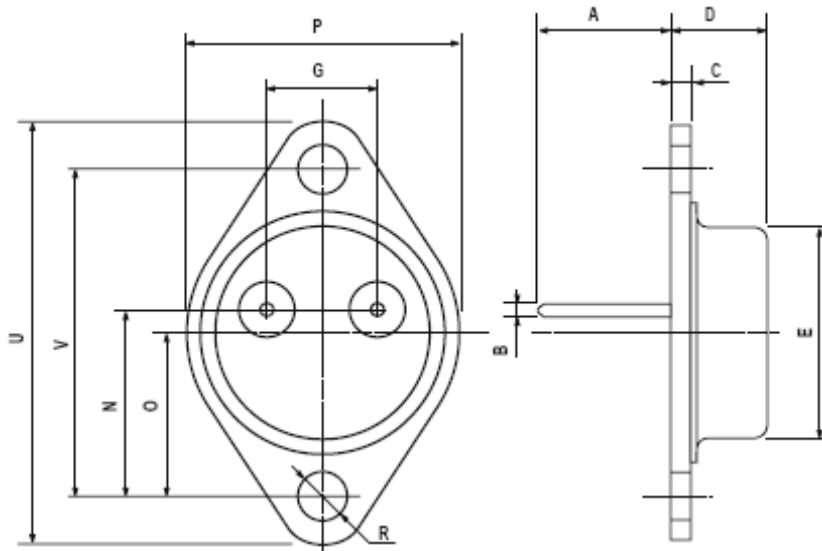
In accordance with JEDEC Registration Data

(*) Pulse Width $\approx 300\ \mu\text{s}$, Duty Cycle $\angle 2.0\%$

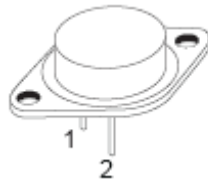
PNP BDX20

MECHANICAL DATA CASE TO-3

DIMENSIONS (mm)		
	min	max
A	11	13.10
B	0.97	1.15
C	1.5	1.65
D	8.32	8.92
F	19	20
G	10.70	11.1
N	16.50	17.20
P	25	26
R	4	4.09
U	38.50	39.30
V	30	30.30



Pin 1 :	Base
Pin 2 :	Emitter
Case :	Collector



Revised October 2012

Information furnished is believed to be accurate and reliable. However, Comset Semiconductors assumes no responsibility for the consequences of use of such information nor for any infringement of patents or other rights of third parties which may result from its use. Data are subject to change without notice. Comset Semiconductors makes no warranty, representation or guarantee regarding the suitability of its products for any particular purpose, nor does Comset Semiconductors assume any liability arising out of the application or use of any product and specifically disclaims any and all liability, including without limitation consequential or incidental damages. Comset Semiconductors' products are not authorized for use as critical components in life support devices or systems.