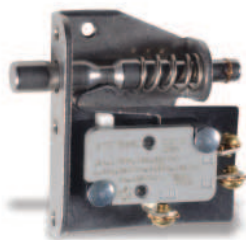


# TL Series

## Door Interlock Switches



### Features/Benefits

- Push/pull motion
- Multiple mounting configurations
- Wide variety of termination options
- Ratings up to 15 AMPS

### Typical Applications

- Computer enclosures
- Panel builders
- Industrial enclosures

### Specifications

CONTACT RATING: 15 AMPS @ 125 & 250 V AC; 0.25 AMP @ 250 V DC; 0.5 AMP @ 125 V DC; 1/2 HP @ 125 & 250 V AC; 3 AMPS @ 125 V AC "L".

ELECTRICAL LIFE: 150,000 cycles at 15 AMPS @ 250 V AC.

INSULATION RESISTANCE: 1,000 M ohm min.

DIELECTRIC STRENGTH: 1,000 Vrms min. @ sea level.

OPERATING TEMPERATURE: -67°F to 302°F (-55°C to 150°C).

**NOTE:** Specifications and materials listed above are for switches with standard options. For information on specific and custom switches, consult Customer Service Center.

### Materials

SWITCH HOUSING: Thermoplastic or general purpose phenolic (UL 94V-0).

MOUNTING BRACKET: Stainless steel.

PLUNGER: Stainless steel.

ACTUATOR BUTTON: Thermoplastic (UL 94V-0).

SPRING: Copper alloy.

PIVOT: Brass alloy.

MOVABLE CONTACT: Fine silver.

STATIONARY CONTACTS: Fine silver.

TERMINALS: Copper alloy.

### Build-A-Switch

To order, simply select desired option from each category and place in the appropriate box. Available options are shown and described on pages J-83 and J-84. For additional options not shown in catalog, consult Customer Service Center.

#### Model

- 11TL** One TM Series SPDT switch
- 12TL** One TM Series SPDT switch
- 23TL** Two TM Series SPDT switches

#### Terminations

- 60** Screw
- 40** .187" Quick connect
- 4A** .250" Quick connect

#### Plunger

- 2** Stainless steel, not tapped
- 4** Stainless steel, tapped



Dimensions are shown: Inch (mm)  
Specifications and dimensions subject to change

**MODEL** 

[illegible]

**J**

## Snap-acting

Torque screws to  
6in lbs max



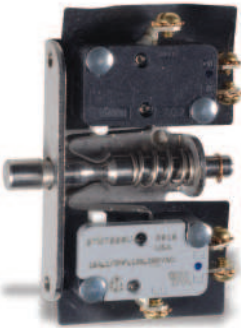
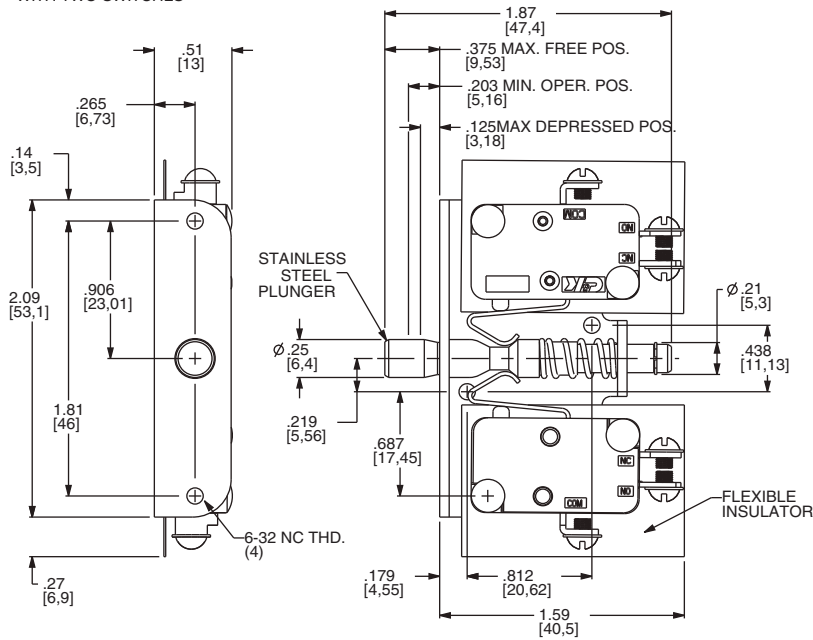
### Third Angle Projection

Dimensions are shown: Inches (mm)  
Specifications and dimensions subject to change

# TL Series Door Interlock Switches

MODEL       

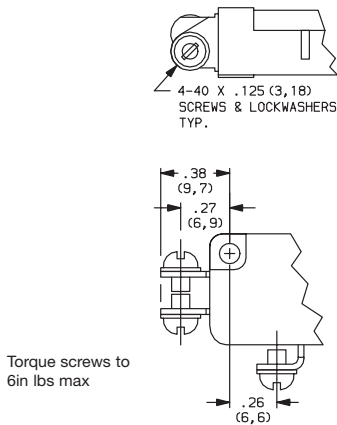
**23TL** WITH TWO SWITCHES



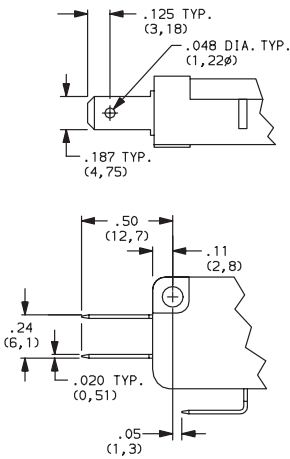
23TL602  
SPDT

TERMINATIONS    

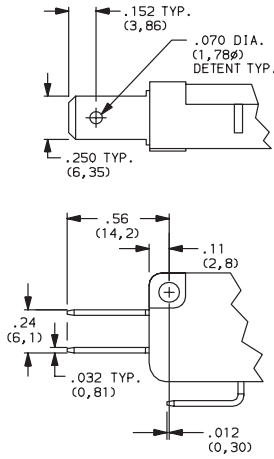
**60** SCREW TERMINALS



**40** .187" QUICK CONNECT



**4A** .250" QUICK CONNECT



PLUNGERS    

**2** STAINLESS STEEL, NOT TAPPED

**4** STAINLESS STEEL, TAPPED 4-40 x .375 (9,52) min. depth

Snap-acting



Dimensions are shown: Inches (mm)  
Specifications and dimensions subject to change