

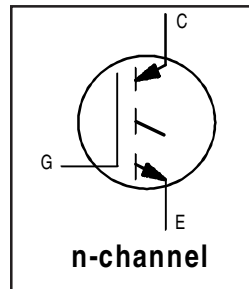
# IRG4BC30U

INSULATED GATE BIPOLAR TRANSISTOR

UltraFast Speed IGBT

## Features

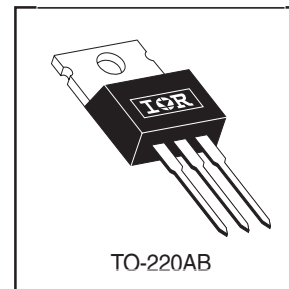
- UltraFast: optimized for high operating frequencies 8-40 kHz in hard switching, >200 kHz in resonant mode
- Generation 4 IGBT design provides tighter parameter distribution and higher efficiency than Generation 3
- Industry standard TO-220AB package



|                                   |
|-----------------------------------|
| $V_{CES} = 600V$                  |
| $V_{CE(on)} \text{ typ.} = 1.95V$ |
| @ $V_{GE} = 15V, I_C = 12A$       |

## Benefits

- Generation 4 IGBTs offer highest efficiency available
- IGBTs optimized for specified application conditions
- Designed to be a "drop-in" replacement for equivalent industry-standard Generation 3 IR IGBTs



## Absolute Maximum Ratings

|                           | Parameter  | Max.                              | Units      |
|---------------------------|--|-----------------------------------|------------|
| $V_{CES}$                 | Collector-to-Emitter Breakdown Voltage           | 600                               | V          |
| $I_C @ T_C = 25^\circ C$  | Continuous Collector Current                     | 23                                | A          |
| $I_C @ T_C = 100^\circ C$ | Continuous Collector Current                     | 12                                |            |
| $I_{CM}$                  | Pulsed Collector Current ①                       | 92                                |            |
| $I_{LM}$                  | Clamped Inductive Load Current ②                 | 92                                |            |
| $V_{GE}$                  | Gate-to-Emitter Voltage                          | $\pm 20$                          | V          |
| $E_{ARV}$                 | Reverse Voltage Avalanche Energy ③               | 10                                | mJ         |
| $P_D @ T_C = 25^\circ C$  | Maximum Power Dissipation                        | 100                               | W          |
| $P_D @ T_C = 100^\circ C$ | Maximum Power Dissipation                        | 42                                |            |
| $T_J$                     | Operating Junction and Storage Temperature Range | -55 to + 150                      | $^\circ C$ |
| $T_{STG}$                 |  |                                   |            |
|                           | Soldering Temperature, for 10 seconds            | 300 (0.063 in. (1.6mm from case ) |            |
|                           | Mounting torque, 6-32 or M3 screw.               | 10 lbf•in (1.1N•m)                |            |

## Thermal Resistance

|                 | Parameter                                 | Typ.     | Max. | Units        |
|-----------------|---|----------|------|--------------|
| $R_{\theta JC}$ | Junction-to-Case                          | —        | 1.2  | $^\circ C/W$ |
| $R_{\theta CS}$ | Case-to-Sink, Flat, Greased Surface       | 0.50     | —    |              |
| $R_{\theta JA}$ | Junction-to-Ambient, typical socket mount | —        | 80   |              |
| Wt              | Weight                                    | 2 (0.07) | —    | g (oz)       |

## Electrical Characteristics @ $T_J = 25^\circ\text{C}$ (unless otherwise specified)

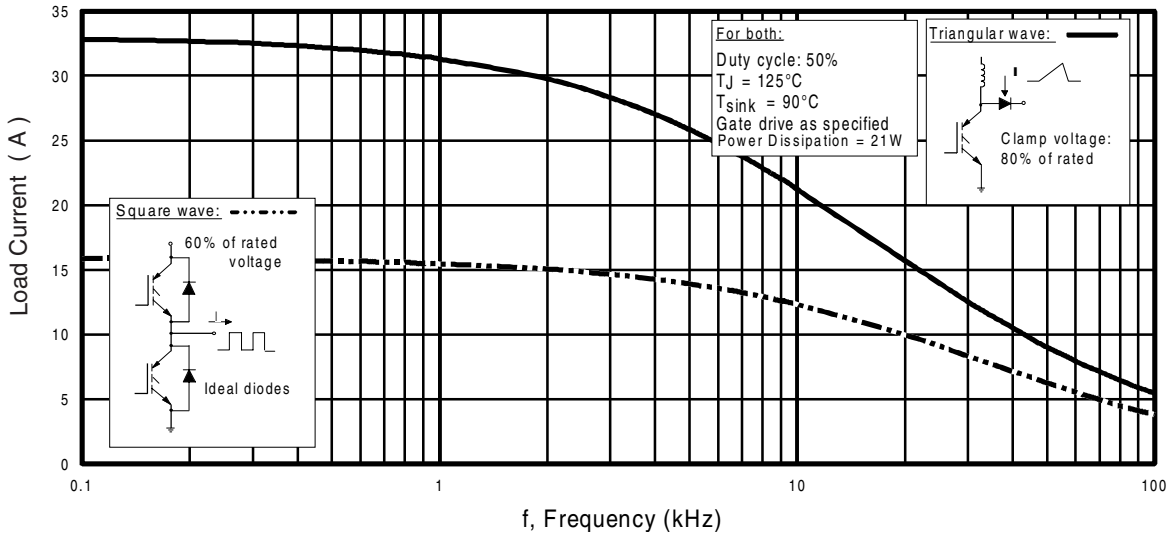
|                                 | Parameter                                | Min. | Typ. | Max.      | Units   | Conditions  |
|---------------------------------|--|------|------|-----------|---------|---|
| $V_{(BR)CES}$                   | Collector-to-Emitter Breakdown Voltage   | 600  | —    | —         | V       | $V_{GE} = 0V, I_C = 250\mu A$                         |
| $V_{(BR)ECS}$                   | Emitter-to-Collector Breakdown Voltage ④ | 18   | —    | —         | V       | $V_{GE} = 0V, I_C = 1.0A$                             |
| $\Delta V_{(BR)CES}/\Delta T_J$ | Temperature Coeff. of Breakdown Voltage  | —    | 0.63 | —         | V/°C    | $V_{GE} = 0V, I_C = 1.0mA$                            |
| $V_{CE(ON)}$                    | Collector-to-Emitter Saturation Voltage  | —    | 1.95 | 2.1       | V       | $I_C = 12A, V_{GE} = 15V$                             |
|                                 |  | —    | 2.52 | —         |         | $I_C = 23A$   |
|                                 |  | —    | 2.09 | —         |         | $I_C = 12A, T_J = 150^\circ\text{C}$                  |
| $V_{GE(th)}$                    | Gate Threshold Voltage                   | 3.0  | —    | 6.0       |         | $V_{CE} = V_{GE}, I_C = 250\mu A$                     |
| $\Delta V_{GE(th)}/\Delta T_J$  | Temperature Coeff. of Threshold Voltage  | —    | -13  | —         | mV/°C   | $V_{CE} = V_{GE}, I_C = 250\mu A$                     |
| $g_{fe}$                        | Forward Transconductance ⑤               | 3.1  | 8.6  | —         | S       | $V_{CE} = 100V, I_C = 12A$                            |
| $I_{CES}$                       | Zero Gate Voltage Collector Current      | —    | —    | 250       | $\mu A$ | $V_{GE} = 0V, V_{CE} = 600V$                          |
|                                 |  | —    | —    | 2.0       |         | $V_{GE} = 0V, V_{CE} = 10V, T_J = 25^\circ\text{C}$   |
|                                 |  | —    | —    | 1000      |         | $V_{GE} = 0V, V_{CE} = 600V, T_J = 150^\circ\text{C}$ |
| $I_{GES}$                       | Gate-to-Emitter Leakage Current          | —    | —    | $\pm 100$ | nA      | $V_{GE} = \pm 20V$                                    |

## Switching Characteristics @ $T_J = 25^\circ\text{C}$ (unless otherwise specified)

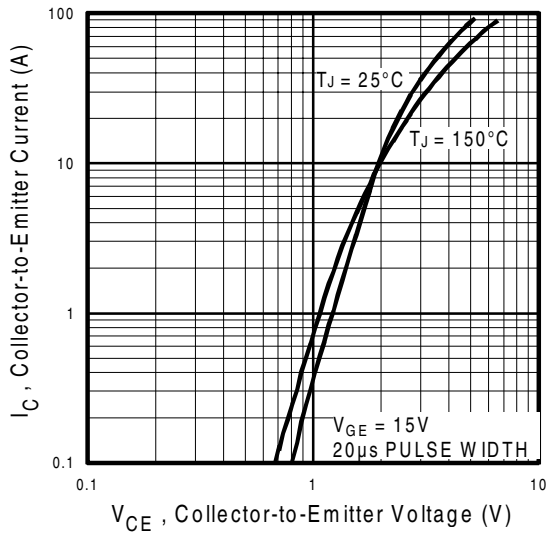
|              | Parameter                         | Min. | Typ. | Max. | Units | Conditions  |
|--------------|-----------------------------------|------|------|------|-------|---|
| $Q_g$        | Total Gate Charge (turn-on)       | —    | 50   | 75   | nC    | $I_C = 12A$<br>$V_{CC} = 400V$<br>$V_{GE} = 15V$<br>See Fig.8   |
| $Q_{ge}$     | Gate - Emitter Charge (turn-on)   | —    | 8.1  | 12   |       |   |
| $Q_{gc}$     | Gate - Collector Charge (turn-on) | —    | 18   | 27   |       |   |
| $t_{d(on)}$  | Turn-On Delay Time                | —    | 17   | —    | ns    | $T_J = 25^\circ\text{C}$<br>$I_C = 12A, V_{CC} = 480V$<br>$V_{GE} = 15V, R_G = 23\Omega$<br>Energy losses include "tail"<br>See Fig. 10, 11, 13, 14 |
| $t_r$        | Rise Time                         | —    | 9.6  | —    |       |   |
| $t_{d(off)}$ | Turn-Off Delay Time               | —    | 78   | 120  |       |   |
| $t_f$        | Fall Time                         | —    | 97   | 150  | ns    | $T_J = 150^\circ\text{C}$ ,<br>$I_C = 12A, V_{CC} = 480V$<br>$V_{GE} = 15V, R_G = 23\Omega$<br>Energy losses include "tail"<br>See Fig. 13, 14      |
| $E_{on}$     | Turn-On Switching Loss            | —    | 0.16 | —    |       |   |
| $E_{off}$    | Turn-Off Switching Loss           | —    | 0.20 | —    |       |   |
| $E_{ts}$     | Total Switching Loss              | —    | 0.36 | 0.50 | mJ    |   |
| $t_{d(on)}$  | Turn-On Delay Time                | —    | 20   | —    | ns    | $T_J = 150^\circ\text{C}$ ,<br>$I_C = 12A, V_{CC} = 480V$<br>$V_{GE} = 15V, R_G = 23\Omega$<br>Energy losses include "tail"<br>See Fig. 13, 14      |
| $t_r$        | Rise Time                         | —    | 13   | —    |       |   |
| $t_{d(off)}$ | Turn-Off Delay Time               | —    | 180  | —    |       |   |
| $t_f$        | Fall Time                         | —    | 140  | —    | mJ    | Measured 5mm from package   |
| $E_{ts}$     | Total Switching Loss              | —    | 0.73 | —    |       |   |
| $L_E$        | Internal Source Inductance        | —    | 7.5  | —    |       |   |
| $C_{ies}$    | Input Capacitance                 | —    | 1100 | —    | pF    | $V_{GE} = 0V$<br>$V_{CC} = 30V$<br>$f = 1.0MHz$<br>See Fig.7  |
| $C_{oes}$    | Output Capacitance                | —    | 73   | —    |       |   |
| $C_{res}$    | Reverse Transfer Capacitance      | —    | 14   | —    |       |   |

### Notes:

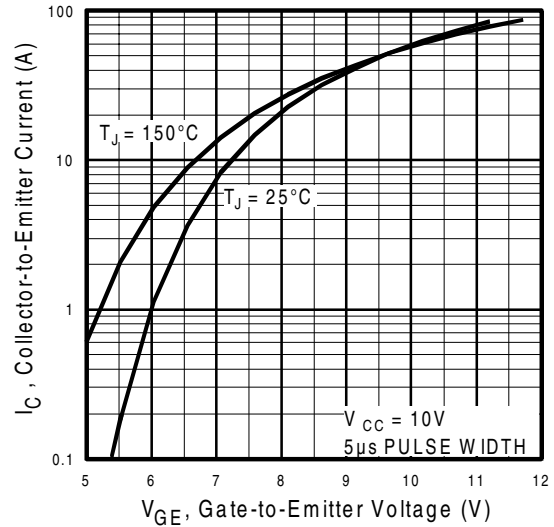
- ① Repetitive rating;  $V_{GE} = 20V$ , pulse width limited by max. junction temperature. ( See fig. 13b )
- ②  $V_{CC} = 80\%(V_{CES})$ ,  $V_{GE} = 20V$ ,  $L = 10\mu H$ ,  $R_G = 23\Omega$ , (See fig. 13a)
- ③ Repetitive rating; pulse width limited by maximum junction temperature.
- ④ Pulse width  $\leq 80\mu s$ ; duty factor  $\leq 0.1\%$ .
- ⑤ Pulse width  $5.0\mu s$ , single shot.



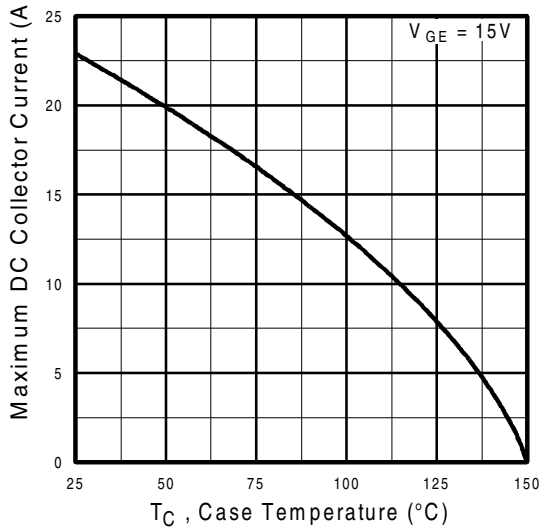
**Fig. 1 - Typical Load Current vs. Frequency**  
(For square wave,  $I = I_{RMS}$  of fundamental; for triangular wave,  $I = I_{PK}$ )



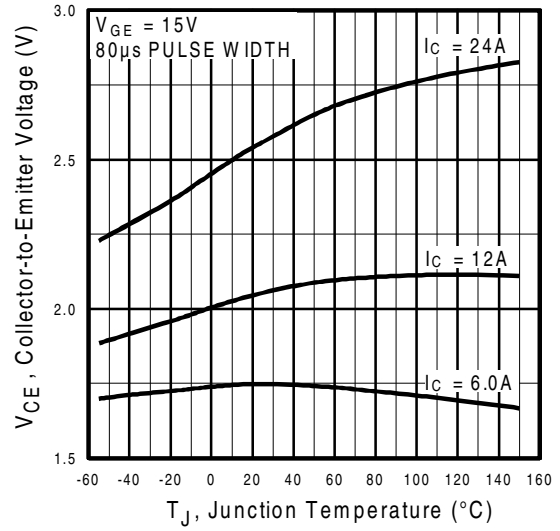
**Fig. 2 - Typical Output Characteristics**



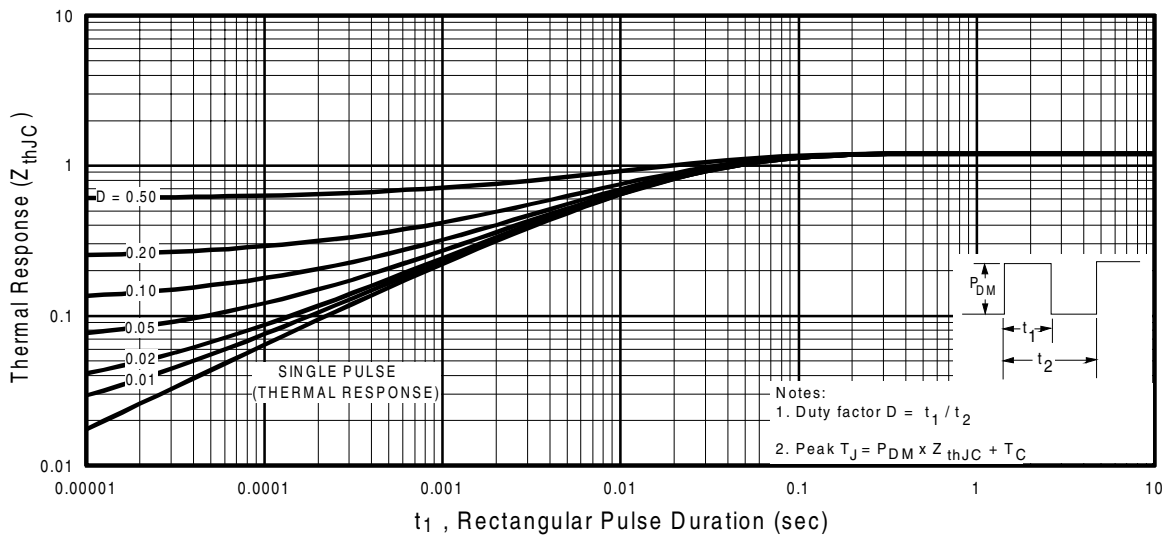
**Fig. 3 - Typical Transfer Characteristics**



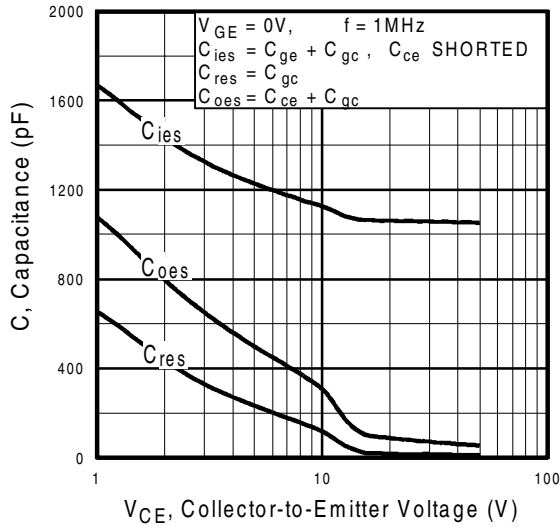
**Fig. 4** - Maximum Collector Current vs. Case Temperature



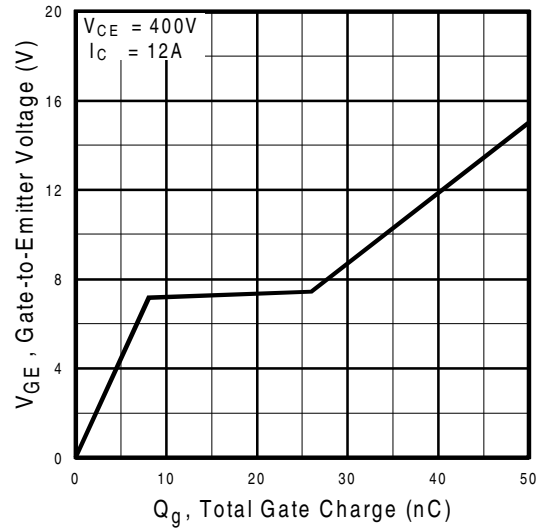
**Fig. 5** - Collector-to-Emitter Voltage vs. Junction Temperature



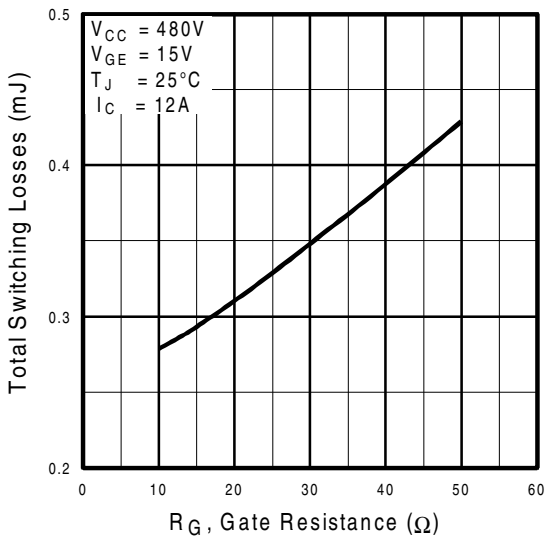
**Fig. 6** - Maximum Effective Transient Thermal Impedance, Junction-to-Case



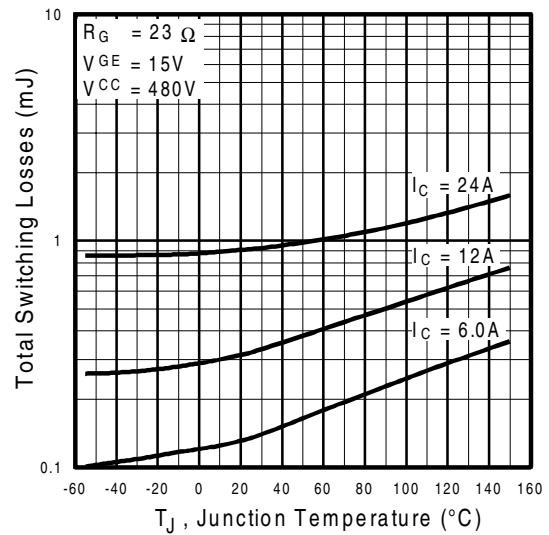
**Fig. 7** - Typical Capacitance vs. Collector-to-Emitter Voltage



**Fig. 8** - Typical Gate Charge vs. Gate-to-Emitter Voltage

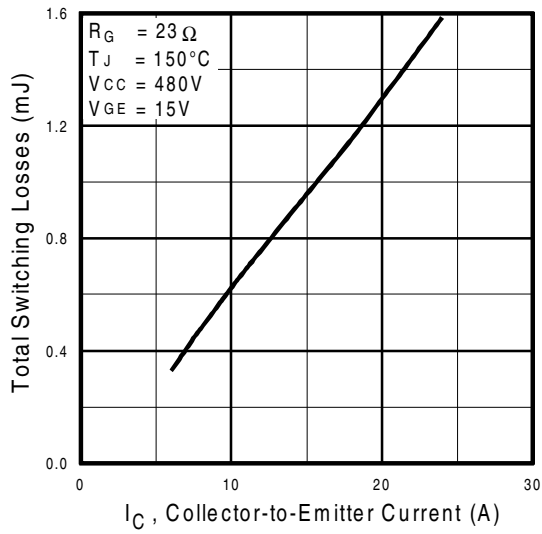


**Fig. 9** - Typical Switching Losses vs. Gate Resistance

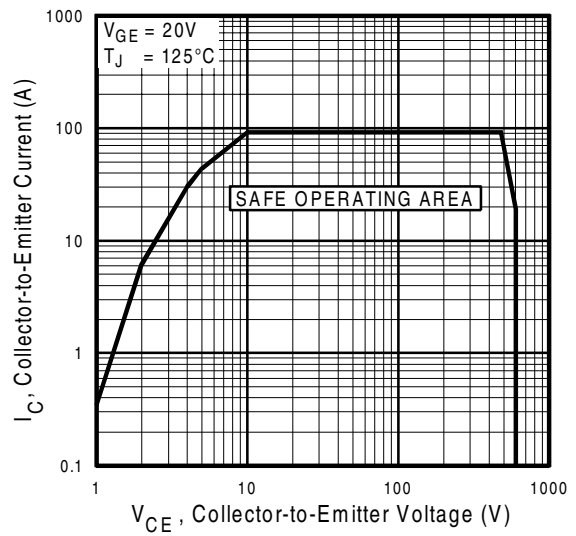


**Fig. 10** - Typical Switching Losses vs. Junction Temperature

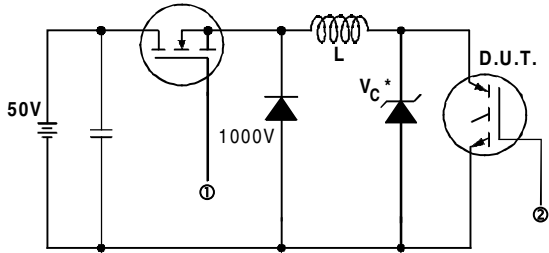
# IRG4BC30U



**Fig. 11** - Typical Switching Losses vs. Collector-to-Emitter Current

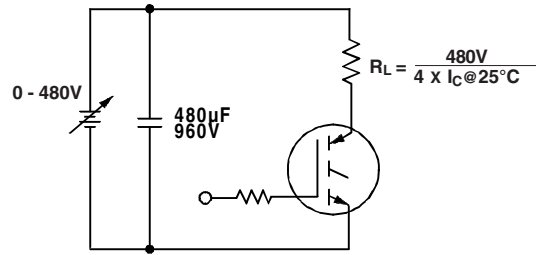


**Fig. 12** - Turn-Off SOA

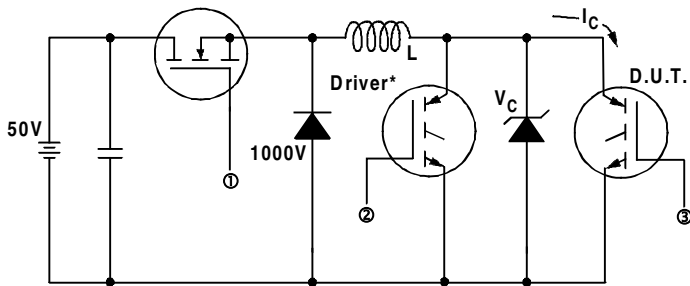


\* Driver same type as D.U.T.;  $V_c = 80\%$  of  $V_{ce(max)}$   
 \* Note: Due to the 50V power supply, pulse width and inductor will increase to obtain rated  $I_d$ .

**Fig. 13a** - Clamped Inductive Load Test Circuit

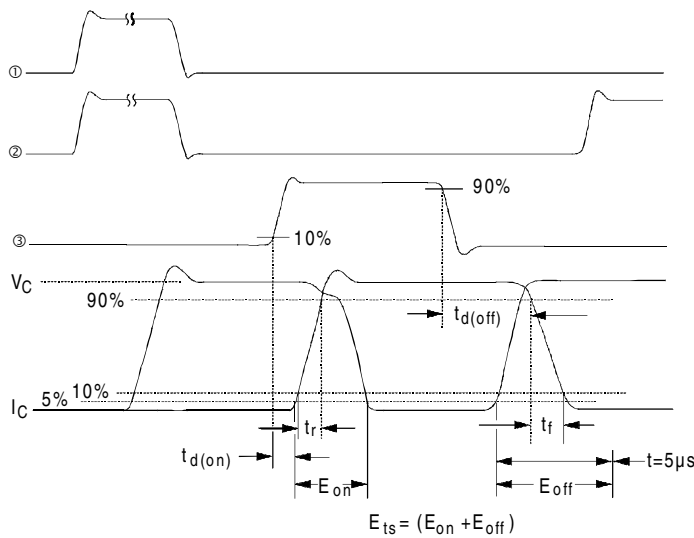


**Fig. 13b** - Pulsed Collector Current Test Circuit



**Fig. 14a** - Switching Loss Test Circuit

\* Driver same type as D.U.T.,  $V_C = 480V$

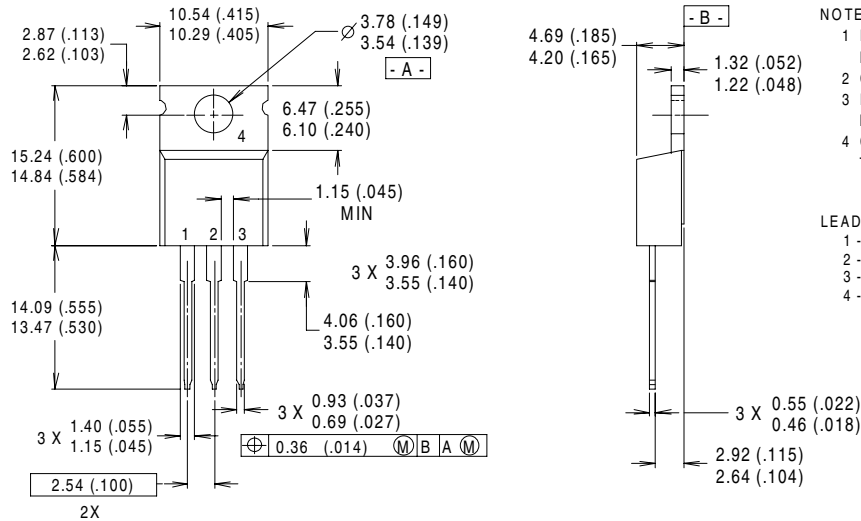


**Fig. 14b** - Switching Loss Waveforms

# IRG4BC30U

International  
**IR** Rectifier

## Case Outline and Dimensions — TO-220AB



### NOTES:

- 1 DIMENSIONS & TOLERANCING PER ANSI Y14.5M, 1982.
- 2 CONTROLLING DIMENSION : INCH.
- 3 DIMENSIONS ARE SHOWN MILLIMETERS (INCHES).
- 4 CONFORMS TO JEDEC OUTLINE TO-220AB.

### LEAD ASSIGNMENTS

- 1 - GATE
- 2 - COLLECTOR
- 3 - EMITTER
- 4 - COLLECTOR

### CONFORMS TO JEDEC OUTLINE TO-220AB

Dimensions in Millimeters and (Inches)

International  
**IR** Rectifier

**IR WORLD HEADQUARTERS:** 233 Kansas St., El Segundo, California 90245, USA Tel: (310) 252-7105

**IR EUROPEAN REGIONAL CENTRE:** 439/445 Godstone Rd, Whyteleafe, Surrey CR3 OBL, UK Tel: ++ 44 (0)20 8645 8000

**IR CANADA:** 15 Lincoln Court, Brampton, Ontario L6T3Z2, Tel: (905) 453 2200

**IR GERMANY:** Saalburgstrasse 157, 61350 Bad Homburg Tel: ++ 49 (0) 6172 96590

**IR ITALY:** Via Liguria 49, 10071 Borgaro, Torino Tel: ++ 39 011 451 0111

**IR JAPAN:** K&H Bldg., 2F, 30-4 Nishi-Ikebukuro 3-Chome, Toshima-Ku, Tokyo 171 Tel: 81 (0)3 3983 0086

**IR SOUTHEAST ASIA:** 1 Kim Seng Promenade, Great World City West Tower, 13-11, Singapore 237994 Tel: ++ 65 (0)838 4630

**IR TAIWAN:** 16 Fl. Suite D. 207, Sec. 2, Tun Haw South Road, Taipei, 10673 Tel: 886-(0)2 2377 9936

*Data and specifications subject to change without notice. 4/00*



Note: For the most current drawings please refer to the IR website at:  
<http://www.irf.com/package/>