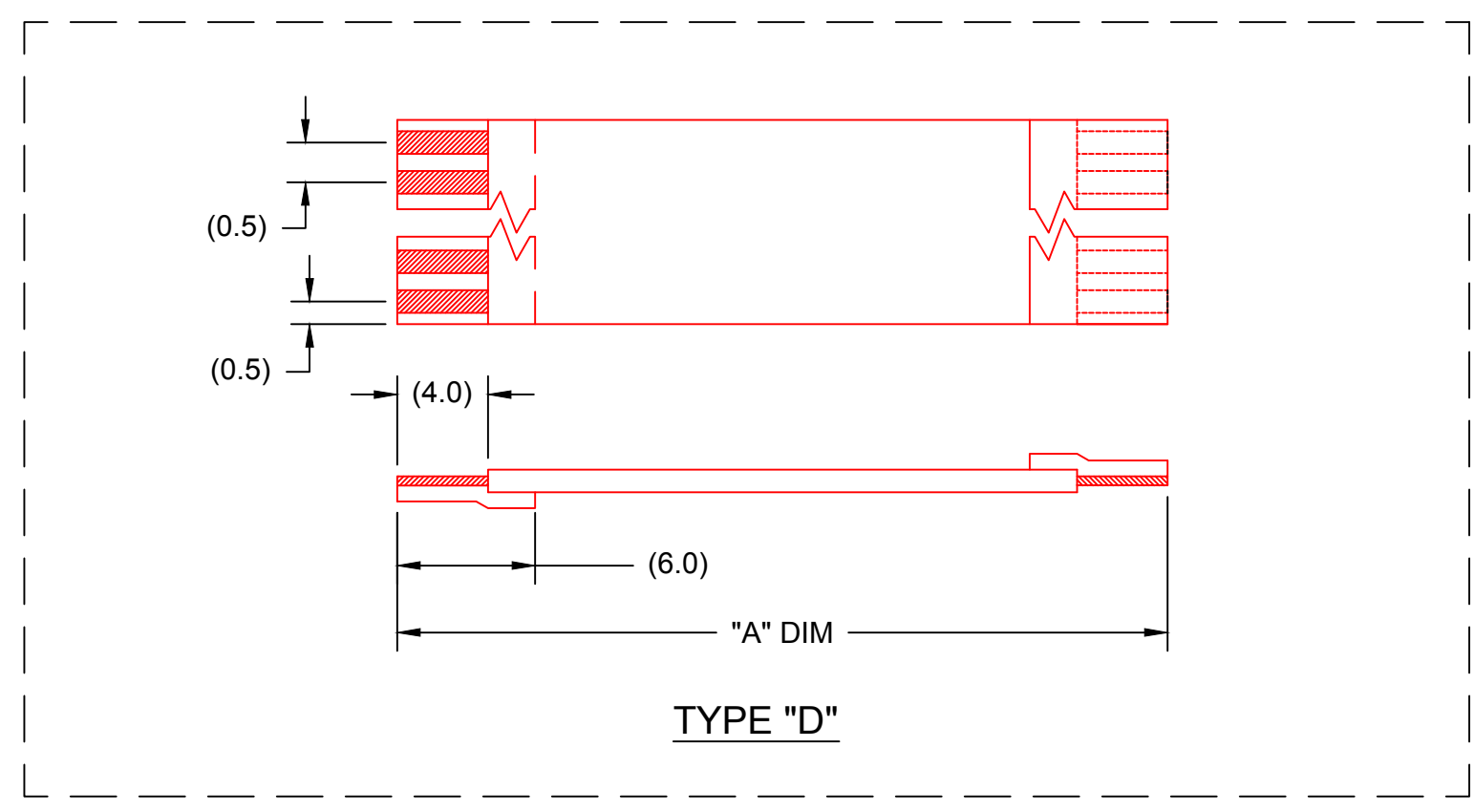
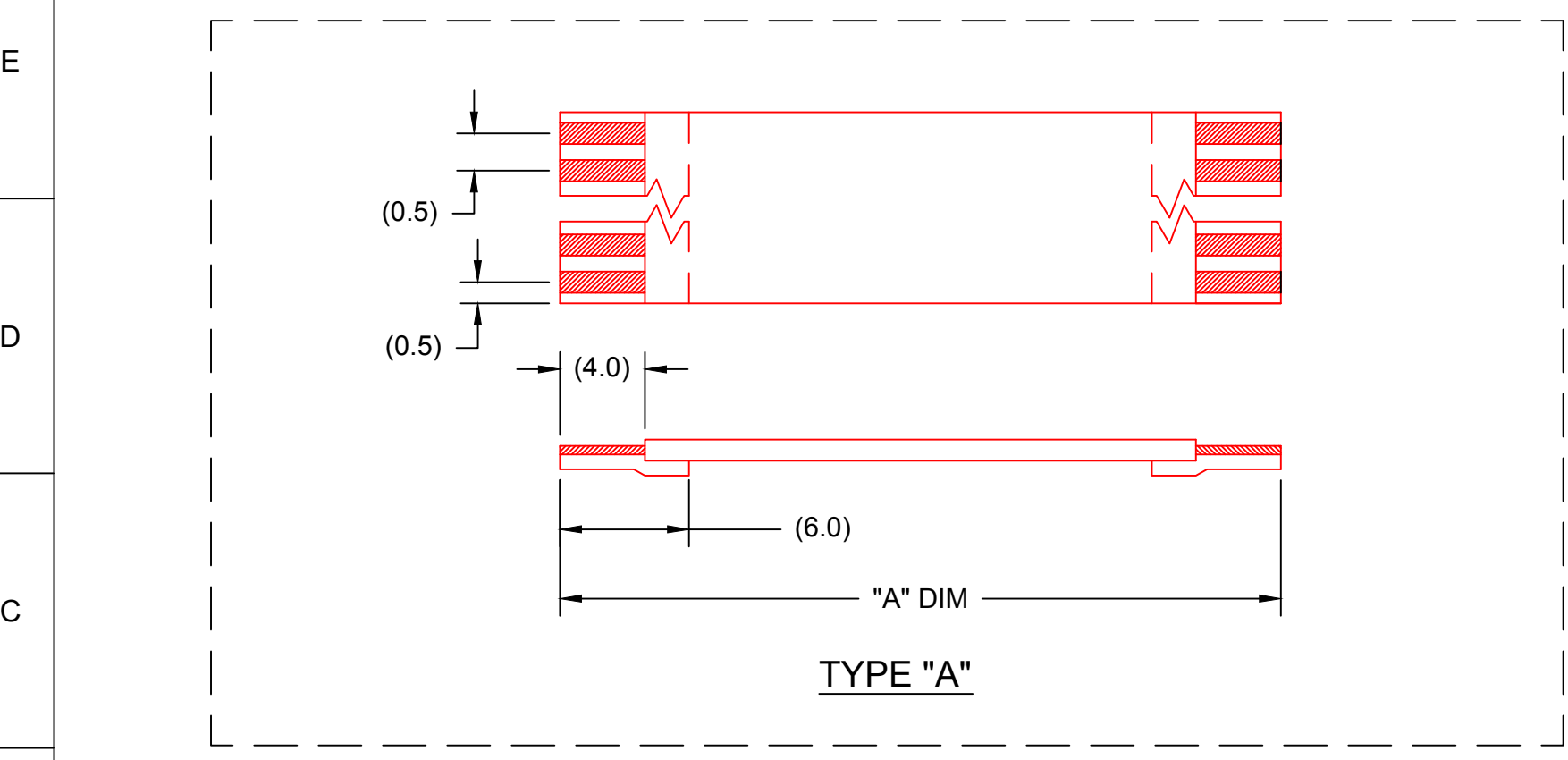


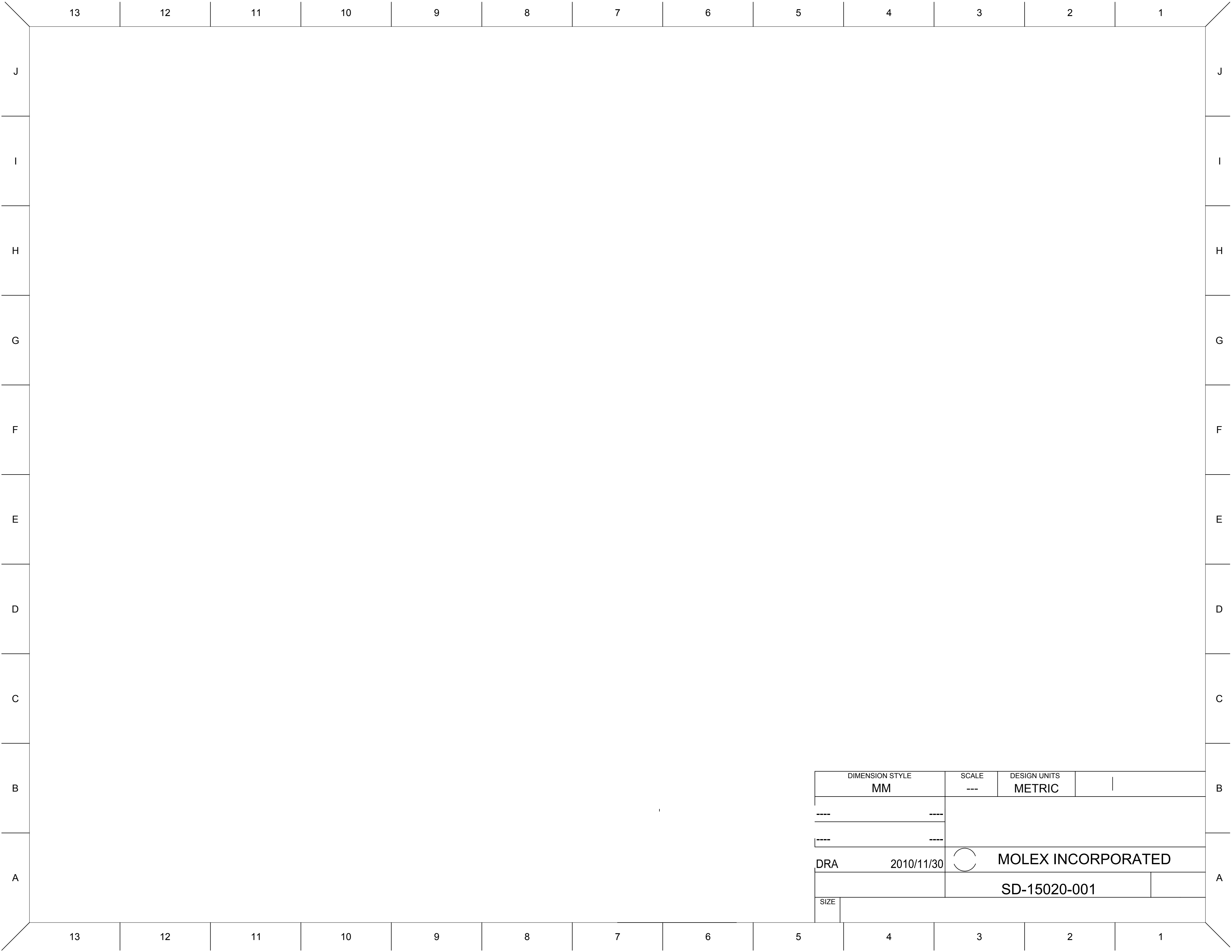
# 0.50MM CENTER GOLD (Au) FFC JUMPER CABLE CHART

"A" DIM.	1.18 ± .079 INCHES 30 ± 2.00		2 ± .079 INCHES 51 ± 2.00 MM		3 ± .118 INCHES 76 ± 3.00 MM		4 ± .118 INCHES 102 ± 3.00 MM		5 ± .157 INCHES 127 ± 4.00 MM		6 ± .157 INCHES 152 ± 4.00 MM		7 ± .157 INCHES 178 ± 4.00 MM		8 ± .157 INCHES 203 ± 4.00 MM		9 ± .197 INCHES 229 ± 5.00 MM		10 ± .197 INCHES 254 ± 5.00 MM		12 ± .197 INCHES 305 ± 5.00 MM	
STIFFENER	TYPE "A"	TYPE "D"	TYPE "A"	TYPE "D"	TYPE "A"	TYPE "D"	TYPE "A"	TYPE "D"	TYPE "A"	TYPE "D"	TYPE "A"	TYPE "D"	TYPE "A"	TYPE "D"	TYPE "A"	TYPE "D"	TYPE "A"	TYPE "D"	TYPE "A"	TYPE "D"	TYPE "A"	TYPE "D"
CKTS: 6	150200051	150200052	150200053	150200054	150200055	150200056	150200057	150200058	150200059	150200060	150200061	150200062	150200063	150200064	150200065	150200066	150200067	150200068	150200069	150200070	150200071	150200072
CKTS: 8	150200073	150200074	150200075	150200076	150200077	150200078	150200079	150200080	150200081	150200082	150200083	150200084	150200085	150200086	150200087	150200088	150200089	150200090	150200091	150200092	150200093	150200094
CKTS: 10	150200095	150200096	150200097	150200098	150200099	150200100	150200101	150200102	150200103	150200104	150200105	150200106	150200107	150200108	150200109	150200110	150200111	150200112	150200113	150200114	150200115	150200116
CKTS: 12	150200117	150200118	150200119	150200120	150200121	150200122	150200123	150200124	150200125	150200126	150200127	150200128	150200129	150200130	150200131	150200132	150200133	150200134	150200135	150200136	150200137	150200138
CKTS: 14	150200139	150200140	150200141	150200142	150200143	150200144	150200145	150200146	150200147	150200148	150200149	150200150	150200151	150200152	150200153	150200154	150200155	150200156	150200157	150200158	150200159	150200160
CKTS: 16	150200161	150200162	150200163	150200164	150200165	150200166	150200167	150200168	150200169	150200170	150200171	150200172	150200173	150200174	150200175	150200176	150200177	150200178	150200179	150200180	150200181	150200182
CKTS: 18	150200183	150200184	150200185	150200186	150200187	150200188	150200189	150200190	150200191	150200192	150200193	150200194	150200195	150200196	150200197	150200198	150200199	150200200	150200201	150200202	150200203	150200204
CKTS: 20	150200205	150200206	150200207	150200208	150200209	150200210	150200211	150200212	150200213	150200214	150200215	150200216	150200217	150200218	150200219	150200220	150200221	150200222	150200223	150200224	150200225	150200226
CKTS: 22	150200227	150200228	150200229	150200230	150200231	150200232	150200233	150200234	150200235	150200236	150200237	150200238	150200239	150200240	150200241	150200242	150200243	150200244	150200245	150200246	150200247	150200248
CKTS: 24	150200249	150200250	150200251	150200252	150200253	150200254	150200255	150200256	150200257	150200258	150200259	150200260	150200261	150200262	150200263	150200264	150200265	150200266	150200267	150200268	150200269	150200270
CKTS: 26	150200271	150200272	150200273	150200274	150200275	150200276	150200277	150200278	150200279	150200280	150200281	150200282	150200283	150200284	150200285	150200286	150200287	150200288	150200289	150200290	150200291	150200292
CKTS: 28	150200293	150200294	150200295	150200296	150200297	150200298	150200299	150200300	150200301	150200302	150200303	150200304	150200305	150200306	150200307	150200308	150200309	150200310	150200311	150200312	150200313	150200314
CKTS: 30	150200315	150200316	150200317	150200318	150200319	150200320	150200321	150200322	150200323	150200324	150200325	150200326	150200327	150200328	150200329	150200330	150200331	150200332	150200333	150200334	150200335	150200336
CKTS: 32	150200337	150200338	150200339	150200340	150200341	150200342	150200343	150200344	150200345	150200346	150200347	150200348	150200349	150200350	150200351	150200352	150200353	150200354	150200355	150200356	150200357	150200358
CKTS: 34	150200359	150200360	150200361	150200362	150200363	150200364	150200365	150200366	150200367	150200368	150200369	150200370	150200371	150200372	150200373	150200374	150200375	150200376	150200377	150200378	150200379	150200380
CKTS: 36	150200381	150200382	150200383	150200384	150200385	150200386	150200387	150200388	150200389	150200390	150200391	150200392	150200393	150200394	150200395	150200396	150200397	150200398	150200399	150200400	150200401	150200402
CKTS: 38	150200403	150200404	150200405	150200406	150200407	150200408	150200409	150200410	150200411	150200412	150200413	150200414	150200415	150200416	150200417	150200418	150200419	150200420	150200421	150200422	150200423	150200424
CKTS: 40	150200425	150200426	150200427	150200428	150200429	150200430	150200431	150200432	150200433	150200434	150200435	150200436	150200437	150200438	150200439	150200440	150200441	150200442	150200443	150200444	150200445	150200446
CKTS: 42	150200447	150200448	150200449	150200450	150200451	150200452	150200453	150200454	150200455	150200456	150200457	150200458	150200459	150200460	150200461	150200462	150200463	150200464	150200465	150200466	150200467	150200468
CKTS: 44	150200469	150200470	150200471	150200472	150200473	150200474	150200475	150200476	150200477	150200478	150200479	150200480	150200481	150200482	150200483	150200484	150200485	150200486	150200487	150200488	150200489	150200490
CKTS: 46	150200491	150200492	150200493	150200494	150200495	150200496	150200497	150200498	150200499	150200500	150200501	150200502	150200503	150200504	150200505	150200506	150200507	150200508	150200509	150200510	150200511	150200512
CKTS: 48	150200513	150200514	150200515	150200516	150200517	150200518	150200519	150200520	150200521	150200522	150200523	150200524	150200525	150200526	150200527	150200528	150200529	150200530	150200531	150200532	150200533	150200534
CKTS: 50	150200535	150200536	150200537	150200538	150200539	150200540	150200541	150200542	150200543	150200544	150200545	150200546	150200547	150200548	150200549	150200550	150200551	150200552	150200553	150200554	150200555	150200556



**NOTES:**  
 1. NO PRINTING ON JUMPER CABLE UNLESS OTHERWISE SPECIFIED. IF PRINTING IS REQUIRED, THEN IT WOULD BE CONSIDERED A SPECIAL JUMPER CABLE.

REINFORCEMENT LENGTH WAS (8.0) EC NO: USW2012-0098 DRWN: MFI 2011/09/29	QUALITY SYMBOL ▽=0 ▽=0	GENERAL TOLERANCES (UNLESS SPECIFIED) <table border="1" style="width: 100%; text-align: center;"> <tr> <td></td> <td>mm</td> <td>INCH</td> </tr> <tr> <td>4 PLACES</td> <td>±---</td> <td>±---</td> </tr> <tr> <td>3 PLACES</td> <td>±---</td> <td>±---</td> </tr> <tr> <td>2 PLACES</td> <td>±---</td> <td>±---</td> </tr> <tr> <td>1 PLACE</td> <td>±---</td> <td>±---</td> </tr> </table>		mm	INCH	4 PLACES	±---	±---	3 PLACES	±---	±---	2 PLACES	±---	±---	1 PLACE	±---	±---	DIMENSION STYLE <b>MM</b>	SCALE ---	DESIGN UNITS <b>METRIC</b>	THIRD ANGLE PROJECTION
		mm	INCH																		
	4 PLACES	±---	±---																		
	3 PLACES	±---	±---																		
2 PLACES	±---	±---																			
1 PLACE	±---	±---																			
		DRASMUSS 2010/11/30	<b>0.50MM CENTER FFC JUMPER CABLE AU PLATING</b>																		
		DRASMUSS 2010/11/30	<b>MOLEX INCORPORATED</b>																		
		SEE CHART	SD-15020-001																		
		THIS DRAWING CONTAINS INFORMATION THAT IS PROPRIETARY TO MOLEX INCORPORATED AND SHOULD NOT BE USED WITHOUT WRITTEN PERMISSION	SHEET NO. 1 OF 2																		



DIMENSION STYLE		SCALE	DESIGN UNITS
MM		---	METRIC
---		---	
---		---	
DRA	2010/11/30	MOLEX INCORPORATED	
		SD-15020-001	
SIZE			