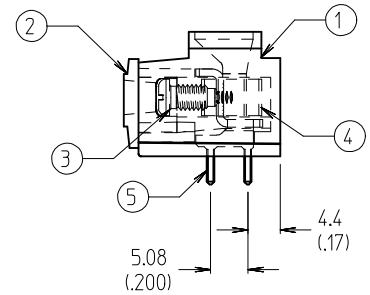
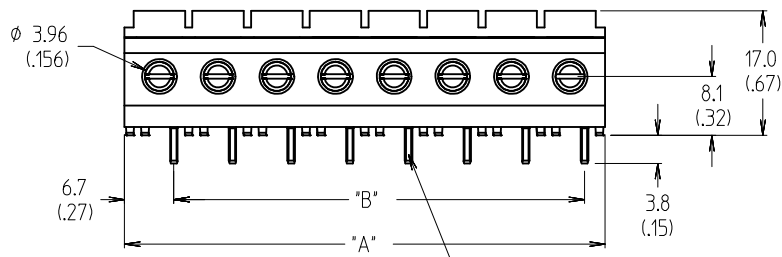
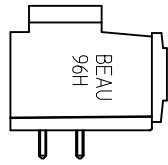
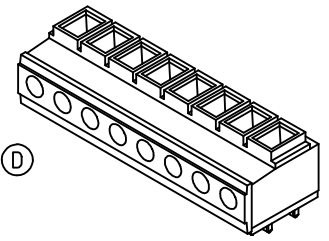
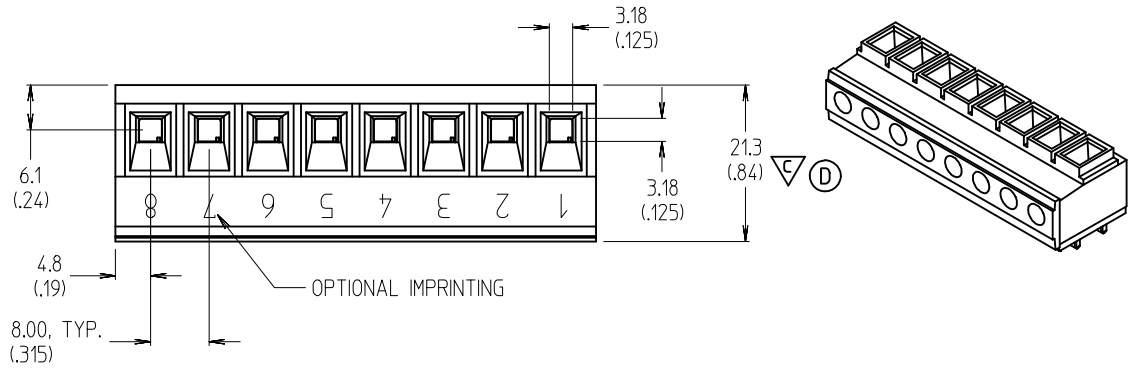
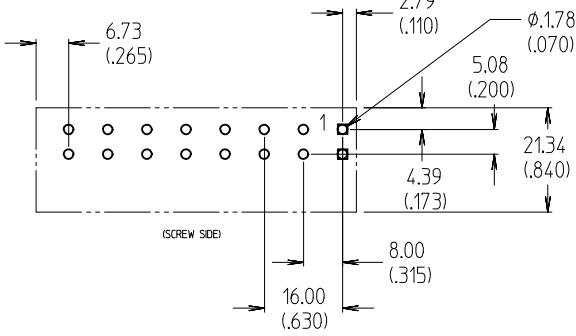


| CIRCUIT NO. (XX) | (In.) |      | (mm)  |      | MATERIAL NO. |
|------------------|-------|------|-------|------|--------------|
|                  | "B"   | "A"  | "B"   | "A"  |              |
| 02               | .315  | .69  | 8.00  | 17.5 | 399608202    |
| 03               | .630  | 1.01 | 16.00 | 25.5 | 399608203    |
| 04               | .945  | 1.32 | 24.00 | 33.5 | 399608204    |
| 05               | 1.260 | 1.64 | 32.00 | 41.5 | 399608205    |
| 06               | 1.575 | 1.95 | 40.00 | 49.5 | 399608206    |
| 07               | 1.890 | 2.27 | 48.00 | 57.5 | 399608207    |
| 08               | 2.205 | 2.58 | 56.00 | 65.5 | 399608208    |
| 09               | 2.520 | 2.90 | 64.00 | 73.5 | 399608209    |
| 10               | 2.835 | 3.21 | 72.00 | 81.5 | 399608210    |
| 11               | 3.150 | 3.53 | 80.00 | 89.5 | 399608211    |
| 12               | 3.465 | 3.84 | 88.00 | 97.5 | 399608212    |



RECOMMENDED PTH PATTERN



- NOTES:
1. MATERIAL: SEE TABLE.
  2. FINISHES: SEE TABLE.
  3. INCH DIMS ARE SHOWN IN PARENTHESIS (XXX).
  4. "XX" REFERS TO THE QUANTITY OF CIRCUITS.
  5. ADDITIONAL ±.002 /INCH FOR DIM. "A" AND DIM "B".
  6. ASSEMBLY IS ROHS COMPLIANT BY EXEMPTION. COMPONENTS MARKED WITH AN ASTERISK (\*) ARE ROHS COMPLIANT BY EXEMPTION. ALL OTHERS ARE ROHS COMPLIANT.

1.0 (.04) SQUARE PC TAIL, TYPICAL, "2XX" PLACES

|      |      |                             |                    |              |
|------|------|-----------------------------|--------------------|--------------|
| 5    | "XX" | TERMINAL, HORIZONTAL, 10AWG | COPPER             | TIN PLATE    |
| 4    | "XX" | CAGE, 10 AWG, M3.5 (*)      | BRASS              | NICKEL PLATE |
| 3    | "XX" | SCREW, M3.5x0.6x.25L        | SILICON BRONZE     | TIN PLATE    |
| 2    | 1    | MOLDING, BODY               | POLYESTER (PBT/PC) | BLACK        |
| 1    | 1    | MOLDING, CAP                | POLYESTER (PBT/PC) | BLACK        |
| ITEM | QTY. | DESCRIPTION                 | MATERIAL           | FINISH       |

|   |   |  |   |  |
|---|---|--|---|--|
| ADD CTQ. DIM.<br>EC NO: IPG2013-1881<br>DRAWN: JENC INAS 2013/09/19<br>CHKD: JMACNEIL 2013/09/19<br>APPR: JMACNEIL 2013/09/24 | QUALITY SYMBOLS<br>▼=0<br>▽=1   | GENERAL TOLERANCES (UNLESS SPECIFIED)<br>mm INCH<br>4 PLACES ± --- ± ---<br>3 PLACES ± --- ± .005<br>2 PLACES ± 0.13 ± .01<br>1 PLACE ± 0.3 ± ---<br>ANGULAR ± 2 ° | DIMENSION STYLE<br>MM/IN<br>DRAWN BY DATE<br>C. YORK 2009/02/02<br>CHECKED BY DATE<br>R. DEROSS 2009/02/02<br>APPROVED BY DATE<br>DTITUS 2010/01/11 | SCALE<br>3:2<br>DESIGN UNITS<br>INCH<br>THIRD ANGLE PROJECTION |
|   | DRAFT WHERE APPLICABLE MUST REMAIN WITHIN DIMENSIONS  |  | MATERIAL NO.<br>SEE CHART   | DOCUMENT NO.<br>SD-39960-004                                   |
|   | THIS DRAWING CONTAINS INFORMATION THAT IS PROPRIETARY TO MOLEX INCORPORATED AND SHOULD NOT BE USED WITHOUT WRITTEN PERMISSION |  | MOLEX INCORPORATED  | SHEET NO.<br>1 OF 1  |
|   | TITLE<br>8.00/.315 SR BTS, PC, RA #10 AWG ASSY, 300V, 30A ROHS COMPLIANT  |  | MOLEX INCORPORATED  |  |