

NOTES:

1. MATERIAL:  
CAGE: NICKEL SILVER, THICKNESS: 0.25mm  
CONNECTOR HOUSING: GLASS FILLED HIGH TEMP PLASTIC, 94 V-0  
COLOR: BLACK  
OVERMOLDED TERMINAL HOUSING: GLASS FILLED HIGH TEMP PLASTIC,  
94 V-0, COLOR: BLACK  
TERMINALS: TIN BRASS  
LIGHT PIPES: POLYCARBONITE, 94 V-0, COLOR: CLEAR  
LIGHT PIPE HOUSING: ZINC
2. FINISH:  
CAGE ASSY: (ALTERNATE POST-PLATED) NICKEL (MATTE) 2-5 MICROMETERS NICKEL OVER 2 MICROMETERS COPPER BASE.  
LIGHT PIPE HOUSING: 150 MICROMETERS NICKEL OVER 150 MICROMETERS COPPER  
TERMINALS: CONTACT AREA: 0.76 MICRONS MINIMUM HARD GOLD OVER 1.27 MICROMETERS MINIMUM NICKEL.  
COMPLIANT AREA - TIN/LEAD OPTION: 0.76 - 1.52 MICROMETERS 90/10 TIN/LEAD OVER 0.76 - 1.52 MICROMETERS NICKEL  
COMPLIANT AREA - TIN OPTION: 0.76 - 1.52 MICROMETERS TIN OVER 0.76 - 1.52 MICROMETERS NICKEL
3. REFER TO PS-75310-001 PRODUCT SPEC FOR ALL ELECTRICAL, MECHANICAL AND ENVIROMENTAL SPECIFICATIONS.
4. LIGHT PIPE PAD LAYOUT IS FOR LOW-PROFILE LED PACKAGE, FOR OTHER RECOMMENDED LAYOUTS REFER TO MOLEX'S REPORT TS-75310-001.
5. REFER TO PK-75733-001 FOR ALL PACKAGING SPECIFICATIONS.
6. THE CURVED TAILS THAT GO INTO THE HOLES LOCATED BY THESE DIMENSIONS ARE BEING ELIMINATED, TO ACCOMMODATE THIS CONVERSION, IT IS RECOMMENDED THAT BOARDS DESIGNED TO THIS PRINT REVISION INCLUDE THESE HOLES.
7. PART COMPLIES WITH COSMETIC SPECIFICATION PS-45499-002.  
SEE SHEET 4 SECTION Z-Z FOR SURFACE CLASSIFICATIONS.  
UNDERSIDE OF CAGE COMPLIES WITH CLASS 'C'.

PART NUMBER	DESCRIPTION	VIEW	COMPLIANT TAIL PLATING	CAGE PLATING
757340001	4 PORT LIGHT PIPE	SEE PG 2	TIN / LEAD	N/A
757340002	INNER 2 PORTS	SEE PG 2	TIN / LEAD	N/A
757340003	OUTER 2 PORTS	SEE PG 2	TIN / LEAD	N/A
757345001	4 PORT LIGHT PIPE	SEE PG 2	TIN	N/A
757345002	INNER 2 PORTS	SEE PG 2	TIN	N/A
757345003	OUTER 2 PORTS	SEE PG 2	TIN	N/A
757341001	4 PORT LIGHT PIPE	SEE PG 2	TIN / LEAD	POST-PLATED

ADD KEEP OUT ZONES  
EC NO: UCP2010-0369  
DRAWN BY: DRWN:MS BARBA  
CHKD:BBARKER  
APPR:SMILLER

7/2/09  
2009/08/26  
2009/08/27

DESCRIPTION  
REV

QUALITY SYMBOLS  
=0  
=0

GENERAL TOLERANCES (UNLESS SPECIFIED)  
mm INCH  
4 PLACES ± --- ± ---  
3 PLACES ± --- ± ---  
2 PLACES ± 0.13 ± ---  
1 PLACE ± 0.25 ± ---  
ANGULAR ± 5 °

DRAFT WHERE APPLICABLE  
MUST REMAIN  
WITHIN DIMENSIONS

SIZE  
C

THIS DRAWING CONTAINS INFORMATION THAT IS PROPRIETARY TO MOLEX  
INCORPORATED AND SHOULD NOT BE USED WITHOUT WRITTEN PERMISSION

DIMENSION STYLE  
MM ONLY

DRAWN BY: DROSCA  
CHECKED BY: JLONG  
APPROVED BY: RNELSON  
DATE: 11/29/2004  
DATE: 11/29/2004  
DATE: 11/29/2004

SCALE  
3:1

DESIGN UNITS  
METRIC

THIRD ANGLE PROJECTION

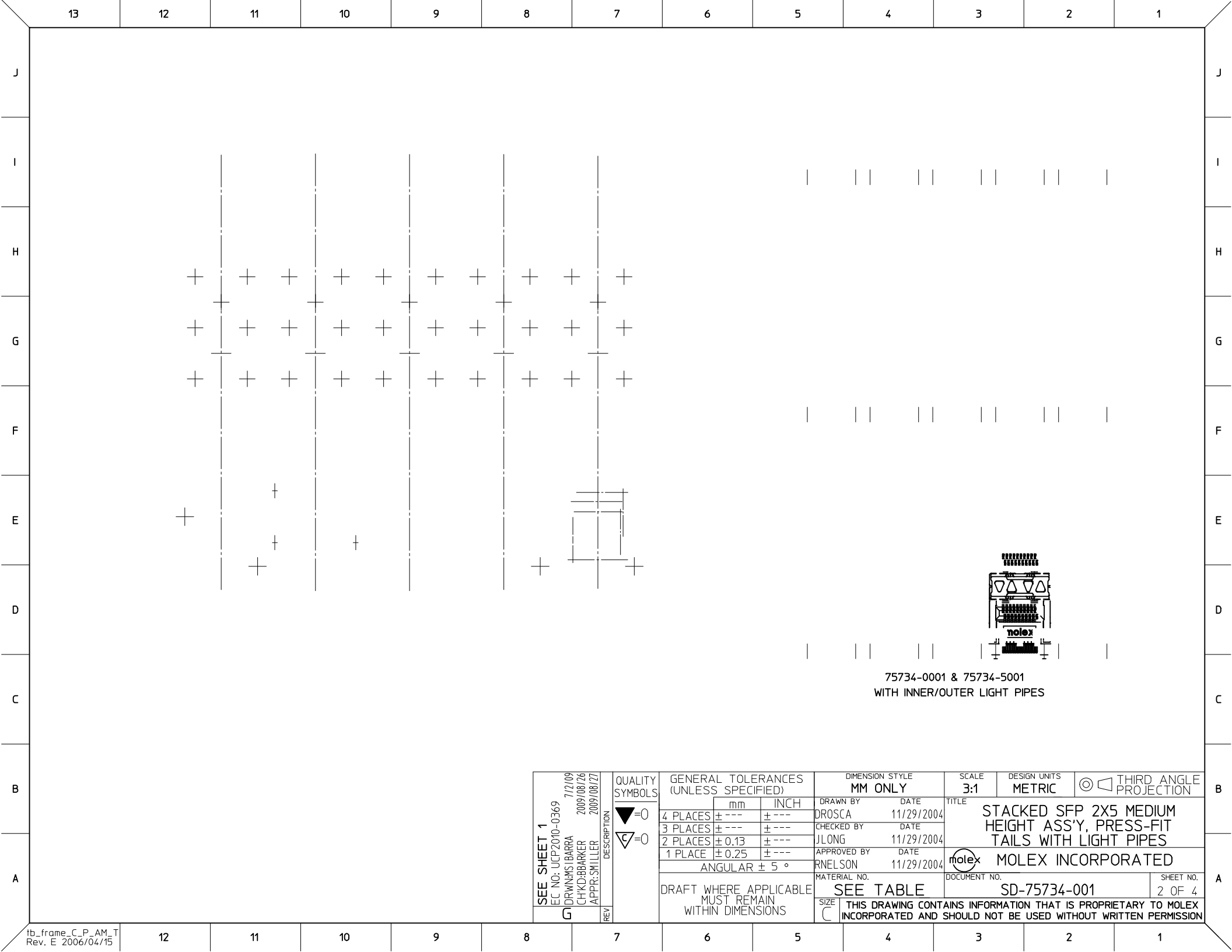
STACKED SFP 2X5 MEDIUM  
HEIGHT ASS'Y, PRESS-FIT  
TAILS WITH LIGHT PIPES

MOLEX INCORPORATED

DOCUMENT NO. SD-75734-001

SHEET NO. 1 OF 4

tb\_frame\_C\_P\_AM\_T Rev. E 2006/04/15



J

I

H

G

F

E

D

C

B

A

J

I

H

G

F

E

D

C

B

A