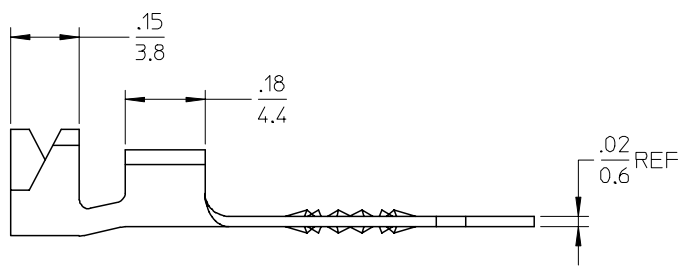
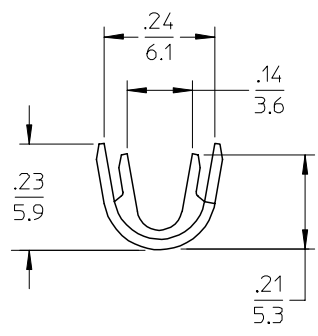
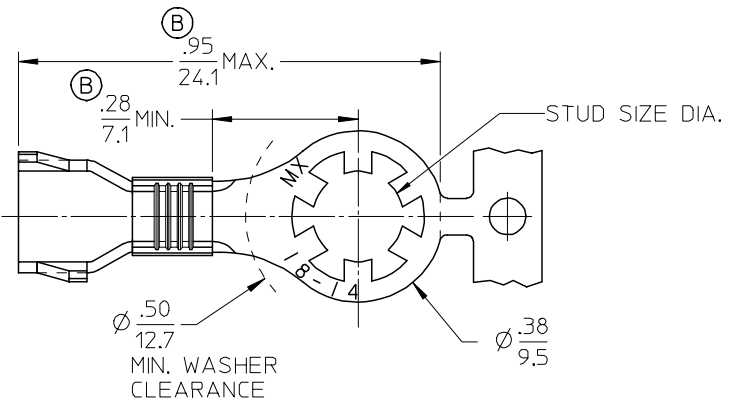


| MATERIAL NO. | ENG. NO.      | STUD SIZE | "S"±.003  | MATERIAL | PLATING |
|--------------|---------------|-----------|-----------|----------|---------|
| 190840001    | SRZ-0129-06   | 6         | .146/3.71 | BRASS    | NONE    |
| 190840002    | SRZ-0129-08   | 8         | .173/4.39 |          |         |
| 190840003    | SRZ-0129-10   | 10        | .198/5.03 |          |         |
| 190840004    | SRZ-4129-06   | 6         | .146/3.71 | BRASS    | TIN     |
| 190840005    | SRZ-4129-08   | 8         | .173/4.39 |          |         |
| 190840006    | SRZ-4129-10   | 10        | .198/5.03 |          |         |
| 190840007    | SRZ-S-4129-06 | 6         | .146/3.71 | STEEL    |         |
| 190840008    | SRZ-S-4129-08 | 8         | .173/4.39 |          |         |
| 190840009    | SRZ-S-4129-10 | 10        | .198/5.03 |          |         |



SALES DRAWING

NOTE(S):  
1. WIRE: SIZE: 18-14 AWG  
0.7 - 2.6 MM<sup>2</sup>

|  |                    |                               |  |            |   |            |              |  |  |  |  |
|--|--------------------|-------------------------------|--|------------|---|------------|--------------|--|--|--|--|
| UPDATE TO MX STDS<br>EC NO: ETC2001-0128<br>DRWNG: JYR/CK 2005/02/18<br>CHKD: JPAML/CK 2005/02/18<br>APPR: JPAML/CK 2005/02/18 | DESCRIPTION<br>REV | QUALITY SYMBOLS<br>▽=0<br>▽=0 | GENERAL TOLERANCES (UNLESS SPECIFIED)                |            | DIMENSION STYLE                                     | SCALE      | DESIGN UNITS | THIRD ANGLE PROJECTION   |  |  |  |
|  |                    |                               |  |            | IN/MM   |            | INCH         |  |  |  |  |
|  |                    |                               | 4 PLACES   | ± ---      | ± ---   | DRAWN BY   | DATE         | TITLE<br>OPEN BARREL STRIP<br>STAR RING, VIBRAKRIMP<br>18-14 AWG |  |  |  |
|  |                    |                               | 3 PLACES   | ± ---      | ± .005  | CHECKED BY | DATE         |  |  |  |  |
| 2 PLACES   | ± 0.13             | ± .01                         | APPROVED BY  | DATE       | MATERIAL NO. SEE CHART<br>DOCUMENT NO. SD-19084-001 |            |              |  |  |  |  |
| 1 PLACE  | ± 0.25             | ± ---                         | RDEROSS  | 1995/05/05 |   |            |              |  |  |  |  |
| ANGULAR ±1/2°  |                    |                               | DRAFT WHERE APPLICABLE MUST REMAIN WITHIN DIMENSIONS |            | SHEET NO. 1 OF 1                                    |            |              |  |  |  |  |
| THIS DRAWING CONTAINS INFORMATION THAT IS PROPRIETARY TO MOLEX INCORPORATED AND SHOULD NOT BE USED WITHOUT WRITTEN PERMISSION  |                    |                               |  |            |   |            |              |  |  |  |  |