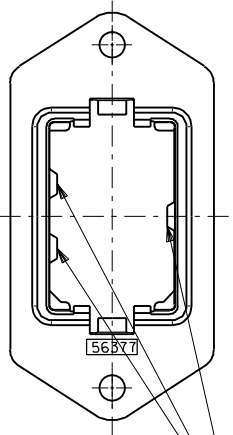
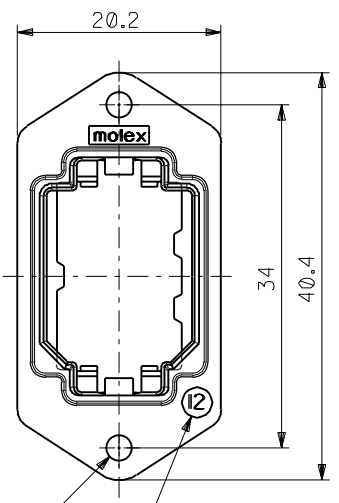
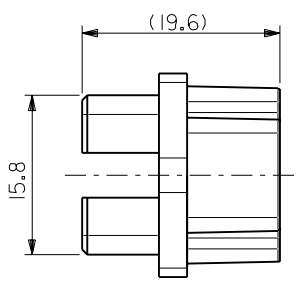
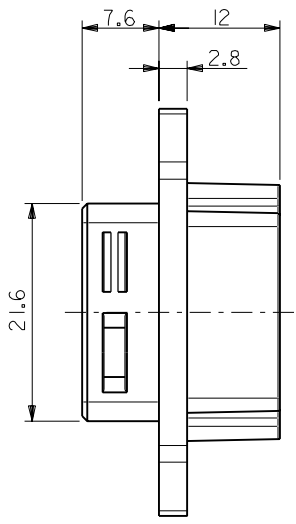


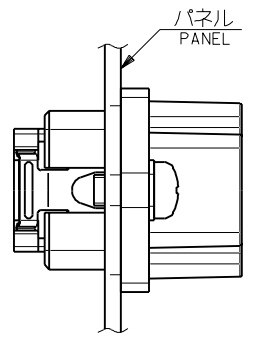
DWG. NO.
SD-56377-004



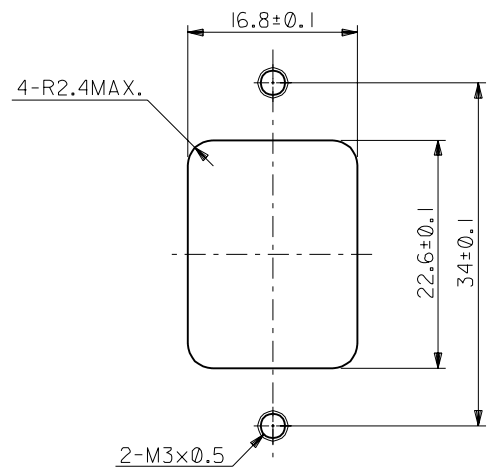
ハウジング挿入方向キー
POLARIZATIONS KEY FOR HOUSING



SIZE IDENTIFICATION



パネル前取り付け
FRONT MOUNT TYPE



推奨パネル切り取り寸法 (前面取り付け)
RECOMMENDED PANEL OPENING (FRONT MOUNTING)

注記
NOTES

- 材質
MATERIAL
亜鉛合金、ニッケルメッキ
ZINC ALLOY, NI PLATING
- 適用ハウジングアッセンブリ: 51233-121* (PIN HS'G ASS'Y)
51238-121* (SOCKET HS'G ASS'Y)
55890-041* (PIN HS'G ASS'Y)
51300-041* (SOCKET HS'G ASS'Y)
APPLICABLE HOUSING ASS'Y: 51233-121* (PIN HS'G ASS'Y)
51238-121* (SOCKET HS'G ASS'Y)
55890-041* (PIN HS'G ASS'Y)
51300-041* (SOCKET HS'G ASS'Y)
- 推奨ねじ締め付けトルク: 5~6 kgf・cm
RECOMENDED SCREW TIGHTENING TORQUE: 5~6 kgf・cm

56377-1200	56377-****
MATERIAL.NO	MODEL.NO
DIMENSIONS:	
<input type="checkbox"/> mm	<input type="checkbox"/> INCH
<input type="checkbox"/> mm	<input checked="" type="checkbox"/> mm ONLY
SHT	REV
REVISE ON	CAD ONLY

EC NO. DRWN: CHK: APPR:	EC NO. DRWN: CHK: APPR:	EC NO. DRWN: CHK: APPR:	REVISED 01/10/17 EC NO. J2002-0932 DRWN: S.AKIYAMA CHK: J.MIYAZAWA APPR: Y.O.ITO	RELEASED 01/02/09 EC NO. JD2001-1040 DRWN: S.AKIYAMA CHK: J.MIYAZAWA APPR: H.IKESUGI
A	0			

MATERIAL 材料	注記参照 SEE NOTES
FINISH 仕上げ	—
WIRE RANGE 適用線径範囲	—
INS. RANGE 被覆外径	—

GENERAL TOLERANCES: (UNLESS SPECIFIED) 一般公差	SCALE 2-1	DESIGN UNITS <input checked="" type="checkbox"/> mm <input type="checkbox"/> INCH	THIRD ANGLE PROJECTION <input checked="" type="checkbox"/> THIRD ANGLE <input type="checkbox"/> FIRST ANGLE
10 UNDER 未満	±0.2	DRAWN BY & DATE S. Akiyama 01/01/25	TITLE: COMPACT ROBOT CONN. (CRC) RECEPTACLE SHELL
10 OVER 以上	±0.25	CHECKED BY & DATE J. Miyazawa / Y. Ito	MATERIAL NO. DRAWING NO. SHEET NO. SEE CHART SD-56377-004 1 OF 1
30 UNDER 未満	±0.3	APPROVED BY & DATE H. Ikesugi	
30 OVER 以上	±3°	CAD FILE NAME 56377004.S01	MOLEX INCORPORATED

THIS DRAWING CONTAINS INFORMATION THAT IS PROPRIETARY TO MOLEX INCORPORATED AND SHOULD NOT BE USED WITHOUT WRITTEN PERMISSION.			SIZE B
--	--	--	-----------

DO NOT SCALE DRAWING