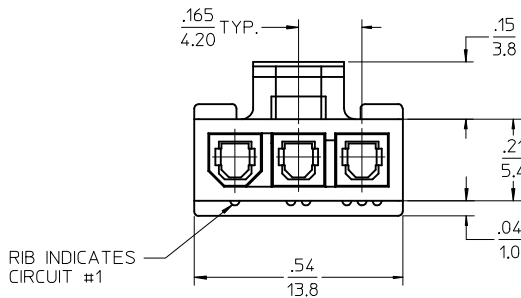
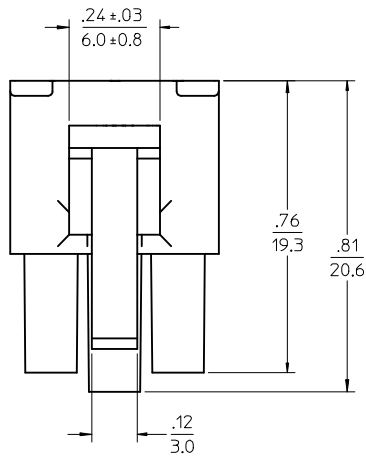
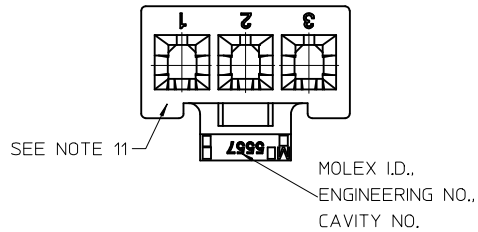


| PART NO.   | ENG. NO.      | CKT SIZE | MATERIAL (SEE NOTE 1) |
|------------|---------------|----------|-----------------------|
| 39-01-4030 | 5557-03R2     | 3        | UL 94V-2              |
| 39-01-4031 | 5557-03R2-210 | 3        | UL 94V-0              |
| 39-01-5039 | 5557-03R2-BL  | 3        | UL 94V-2, BLACK       |
| 46999-0287 | 5557-03R2-400 | 3        | UL 94V-0, BLACK       |

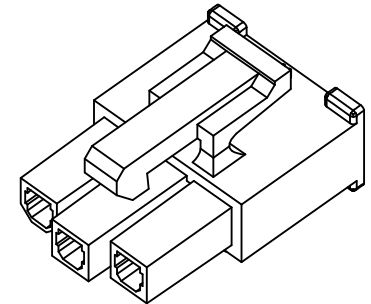
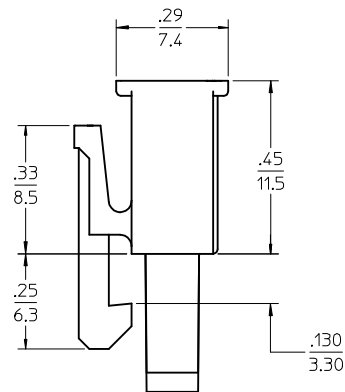


#### LEGEND

5557-03R2-\*\*\*  
 CKT SIZE ———  
 RECEPTACLE ———  
 MATERIAL OPTION:  
 (SEE NOTE 1) ———

#### NOTES:

- MATERIAL:  
 \*BLANK\*=NYLON 6/6, UL94V-2, LOW HALOGEN, COLOR: NATURAL  
 \*210\*=NYLON 6/6, UL94V-0, LOW HALOGEN, COLOR: NATURAL  
 \*BL\*=NYLON 6/6, UL94V-2, LOW HALOGEN, COLOR: BLACK  
 \*400\*=NYLON 6/6, UL94V-0, LOW HALOGEN, COLOR: BLACK
- FINISH: NOT APPLICABLE
- PRODUCT SPECIFICATION: PS-5556-001
- PACKAGING: PK-5557-002
- PART MATES WITH MOLEX RIGHT ANGLE HEADER #5569-03A\*, VERTICAL HEADER #5566-03A3\* AND PLUG #5559-03P\*.
- PART TO BE USED WITH MOLEX FEMALE TERMINAL #5556.
- WHEN MATING WITH ANOTHER CONNECTOR, THE CENTER CIRCUIT WILL "MAKE FIRST AND BREAK LAST".
- PART IS NOT DESIGNED FOR CURRENT SHARING.
- CONNECTOR ASSEMBLIES ARE NOT TO BE MATED OR UNMATED WHILE CIRCUITS ARE LIVE.
- WIRES ARE TO BE DRESSED IN SUCH A MANNER TO ALLOW THE TERMINALS TO FLOAT FREELY IN THE POCKET.
- "MX" TRADEMARK MAY BE LOCATED ON LATCH OR SURFACE INDICATED. CAVITY NO. MAY BE LOCATED ON EITHER SIDE OF ENGINEERING NO. ON LATCH.
- PART CONFORMS TO CLASS "B" REQUIREMENTS OF COSMETIC SPECIFICATION PS-45499-002.



|  |                          |   |                                       |           |   |                    |                             |   |                           |
|--|--------------------------|---|---------------------------------------|-----------|---|--------------------|-----------------------------|---|---------------------------|
| ADD LOW HALOGEN<br>EC NO: UCP2013-1411<br>2012/10/10<br>DRWN:BBEE<br>2012/10/10<br>CHKD:JBELL<br>2012/10/12<br>APPR:FSMITH | DESCRIPTION<br>REV<br>G2 | QUALITY SYMBOLS<br><div>▽=0</div> <div>▽=0</div> <div>▽=0</div> | GENERAL TOLERANCES (UNLESS SPECIFIED) |           | DIMENSION STYLE<br>IN/MM  |                    | SCALE<br>4:1                | DESIGN UNITS<br>METRIC  | THIRD ANGLE<br>PROJECTION |
|  |                          |   |                                       | mm        | INCH  | DRAWN BY<br>GEP    | DATE<br>1990/10/02          | TITLE<br>3 CIRCUIT RECEPTACLE,<br>(MINI-FIT JR.)<br>(MAKE-FIRST/BREAK-LAST) |                           |
|  |                          |   | 4 PLACES ± ---                        | ± ---     | CHECKED BY<br>RJF   | DATE<br>1990/10/02 |                             |   |                           |
|  |                          |   | 3 PLACES ± ---                        | ± .010    | APPROVED BY   | DATE               |                             |   |                           |
|  |                          |   | 2 PLACES ± 0.25                       | ± .015    | RAS   | 1990/10/02         | MOLEX<br>MOLEX INCORPORATED |   |                           |
|  |                          |   | 1 PLACE ± 0.38                        | ± ---     | MATERIAL NO.  | DOCUMENT NO.       |                             | SHEET NO.   |                           |
| DRAFT WHERE APPLICABLE<br>MUST REMAIN<br>WITHIN DIMENSIONS   |                          | ANGULAR ±1/2°   |                                       | SEE CHART |   | SD-5557-03R2*      |                             | 1 OF 1  |                           |
|  |                          |   |                                       | SIZE<br>C | THIS DRAWING CONTAINS INFORMATION THAT IS PROPRIETARY TO MOLEX INCORPORATED AND SHOULD NOT BE USED WITHOUT WRITTEN PERMISSION |                    |                             |   |                           |