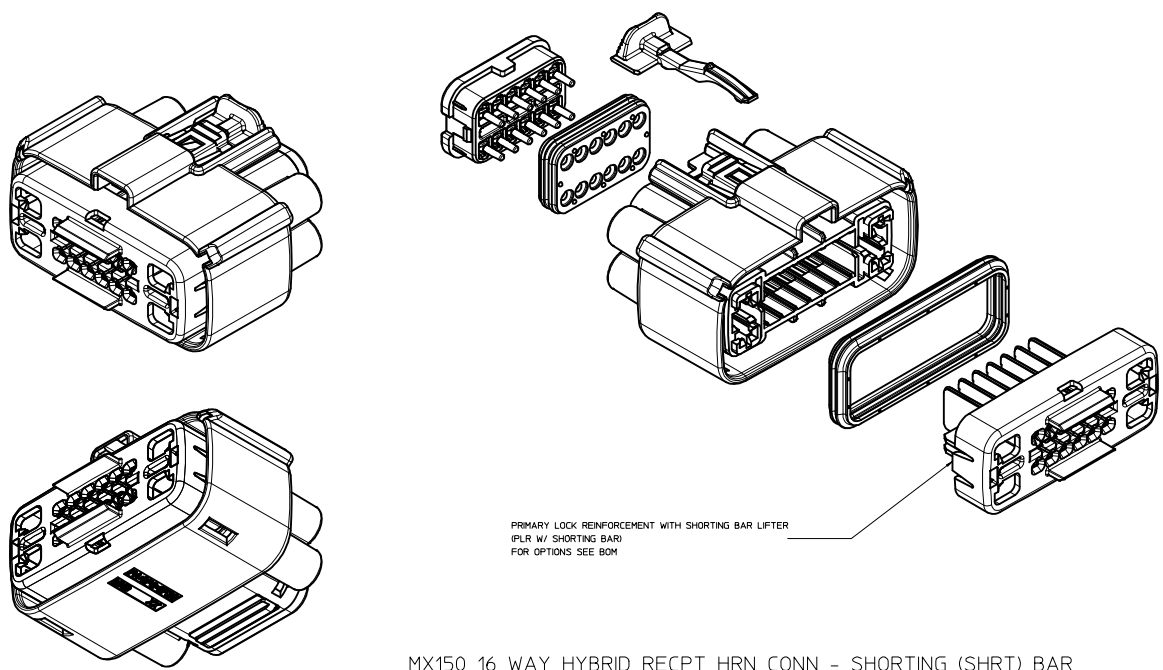


MX150 16 WAY HYBRID RECPT HRN CONN - STANDARD (STD)



MX150 16 WAY HYBRID RECPT HRN CONN - SHORTING (SHRT) BAR
UNLESS COMPONENT NOTED, SEE STANDARD ASSEMBLY

TABLE OF CONTENTS	
SHEET NO.	SHEET DESCRIPTION
1	NOTES
2	KEY CONFIGURATIONS
3	RECEPTACLE SEALED ASSEMBLY
4-7	BOM

NOTES: VALID UNLESS OTHERWISE SPECIFIED

1. GENERAL:
 - a. APPLICATION SPECIFICATION SEE: AS-33472-100
CONTAINS: PRODUCT INTRODUCTION, PRODUCT SUMMARY, CONNECTOR ASSEMBLY, PACKAGING INFORMATION, CONNECTOR MATING, SERVICE INSTRUCTIONS, ELECTRICAL CONTINUITY CHECKING, CRIMPING, AND TROUBLESHOOTING.
-STANDARD (NON-SHRT) CONFIGURATIONS DESIGNED TO MATE WITH DEVICE CONNECTION AS SPECIFIED IN DRAWING EWCAP 999-S-016-2-202. AVAILABLE AT <http://ewcap.usmccr.com/teams/egf/>.
-STANDARD (NON-SHRT) CONFIGURATIONS AND SHORTING BAR CONFIGURATIONS DESIGNED TO MATE WITH BLADE HOUSING ASSEMBLY SPECIFIED IN DRAWING SD-33486-161.
-FOR 15mm RECEPTACLE TERMINALS TO BE USED WITH THIS ASSEMBLY. SEE MOLEX DRAWING SD-33012-002.
-15mm TERMINALS TO BE USED WITH WIRE WITH DIAMETER RANGE OF 1.4mm TO 2.69mm.
-FOR 2.8mm RECEPTACLE TERMINALS TO BE USED WITH THIS ASSEMBLY SEE TABLE.
-2.8mm TERMINALS TO BE USED WITH WIRE WITH DIAMETER RANGE OF 1.50mm TO 3.30mm.
-ASSEMBLY SHIPPED WITH PLR AND CPA IN PRE-LOCK POSITION (SEE SECTION 2-2 PRE-LOCK).
IN THE EVENT THAT THE PLR IS FOUND IN THE SEATED (FINAL LOCK) POSITION, REFER TO MOLEX SPECIFICATION PS-34646-001. AVAILABLE AT www.molex.com <http://www.molex.com>.
-ASSEMBLY CONFORMS TO SAE/USCAR-2 REV.4 WITH THE FOLLOWING EXCEPTIONS:
ENGAGEMENT FORCE TO MOVE CPA FROM PRE-LOCK TO FINAL LOCK POSITION WHEN UNMATED: 40N MIN.
DISENGAGEMENT FORCE TO MOVE CPA FROM FINAL LOCK TO PRE-LOCK POSITION: 3N MIN. 40N MAX.
-TERMINAL INSERTION FORCE FOR WIRE DIAMETER ABOVE 2.5mm NOT EXCEEDING 2.69mm SHALL NOT EXCEED 40 NEWTONS.
 - b. PRODUCT SPECIFICATION SEE: PS-33476-000
CONTAINS: PRODUCT INTRODUCTION, PRODUCT SUMMARY, RATINGS (CURRENT, TEMPERATURE, SEALING, AND FLAMMABILITY), AND PRODUCT VALIDATION.
 - c. PACKAGING SPECIFICATION PER MOLEX DRAWING: PK-30907-895
 - d. PARTS MUST BE IN COMPLIANCE TO MOLEX CHEMICAL SUBSTANCES FOR PRODUCTS SPECIFICATION: ES-40000-5016
 - e. DATA MUST BE SUBMITTED UNDER THE MOLEX PART NUMBER TO IMDS (COMPANY ID:13259)
 - f. FOR INFORMATION ON 16 WAY HYBRID RECEPT HRN ASSY WITH CLIPSLOT SEE E-33476-181

2. DESIGN - MATERIALS:
 - a. SEE BOM TABLE
3. DESIGN - GEOMETRY:
 - a. THIS IS A 100% CAD GENERATED PART. THE CAD MATHEMATICAL DATA IS THE MASTER FOR THIS PART. FOR DIMENSIONAL OR ANY INFORMATION NOT SHOWN ON THIS DRAWING, ANALYZE THE CAD MODEL.
 - b. GEOMETRIC DIMENSIONS AND TOLERANCES PER ASME Y14.5M - 1994
 - c. EDGES AND UNDIMENSIONED DETAILS PER ISO13715
 - d. CORNERS SHOWN AS SHARP TO BE R 0.2 MAX.
 - e. LETTERING SHALL BE 0.15 MAX RAISED IN 0.25 MAX RECESS PAD. THIS INCLUDES RECYCLING CODE, CAVITY ID, VENDOR IDENTIFICATION, AND CUSTOMER MATERIAL NUMBER.
 - f. VISUAL DEFECTS SHALL MEET COSMETIC STANDARD PS-45499-002 (CLASS B)
 - g. LASER MARKING: TBD

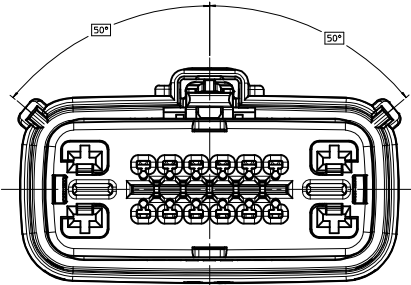
TYCO 2.8mm CABLE SEAL TERMINAL		
FORD P/N	FEMALE RECEPTACLE	GRIP SIZE
IFIT-14474-KA		12
IFIT-14474-JA		14
IFIT-14474-HA		16
IFIT-14474-GA		18
IFIT-14474-FA		20
IFIT-14474-EA		22

INSPECTION NUMBER LOG
LAST NUMBER USED:
ADDED:
REMOVED:

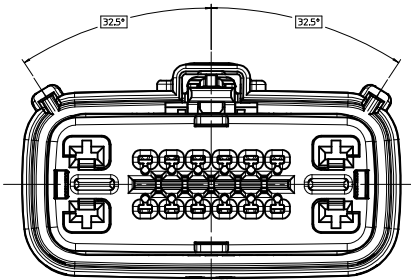
BX	UPDATED TO PLANNED OBSOLESCENCE
BW	ADD NEW P/N 33476-4043 THRU 33476-4046
BV10	ADD NEW P/N 33476-4042
BV9	ADD NEW P/N 33476-4041
BV8	ADD NEW P/N 33476-4037 33476-4038 33476-4039 33476-4040
BV7	ADDED NEW P/N 33476-4023 33476-4024 33476-4025 33476-4026 33476-4027 33476-4028 33476-4029 33476-4030 33476-4031 33476-4032 33476-4033 33476-4034 33476-4035 33476-4036
BV6	ADD NEW P/N 33476-4022
BV5	ADD NEW P/N 33476-4016 33476-4017 33476-4018 33476-4019 33476-4020 33476-4021
BV4	ADD NEW P/N 33476-4014 33476-4015
BV3	ADD NEW P/N 33476-4012 33476-4013
BV2	ADD NEW P/N 33476-4011
BV1	CHANGE PART NUMBER STATUS ADD NEW P/N 33476-4009 33476-4010 ADD NEW P/N 33476-4006 33476-4007
BV	33476-4008
REV	DESCRIPTION

ENTER DESCRIPTION EC NO: JAU2016-0550 DRAWING P/N: 2015/0174 APPROVED: 2015/0178 REV: BX	QUALITY SYMBOLS ∇=0 ∇=1 ∇=2 ∇=3 ∇=4	GENERAL TOLERANCES (UNLESS SPECIFIED) mm INCH 4 PLACES ± 0.1 ± 0.004 3 PLACES ± 0.1 ± 0.004 2 PLACES ± 0.1 ± 0.004 1 PLACE ± 0.1 ± 0.004 0 PLACE ± 0.1 ± 0.004 ANGULAR ± 3 ° DRAFT WHERE APPLICABLE MUST REMAIN WITHIN DIMENSIONS	DIMENSION STYLE MM ONLY DRAWN BY DATE X CUNNINGHAM 2011/10/27 CHECKED BY DATE APPROVED BY DATE	SCALE 3:1 DESIGN UNITS METRIC THIRD ANGLE PROJECTION MX150 16 WAY HYBRID RECPT SEALED ASSEMBLY molex SD-33476-161 SHEET NO. OF 8
	MATERIAL NO. DOCUMENT NO.			THIS DRAWING CONTAINS INFORMATION THAT IS PROPRIETARY TO MOLEX, INCORPORATED AND SHOULD NOT BE USED WITHOUT WRITTEN PERMISSION
	SEE BOM			SD-33476-161
	INCORPORATED AND SHOULD NOT BE USED WITHOUT WRITTEN PERMISSION			

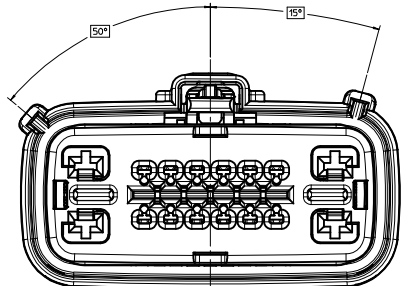
KEY CONFIGURATIONS



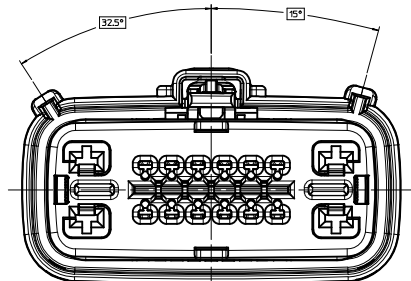
KEY A



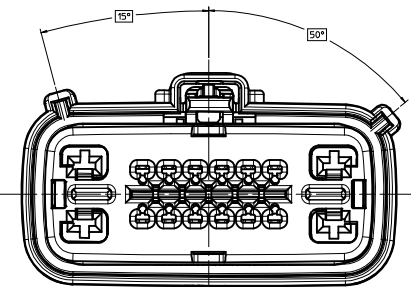
KEY E



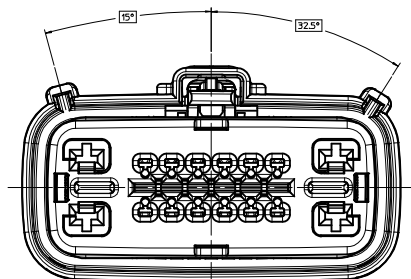
KEY B



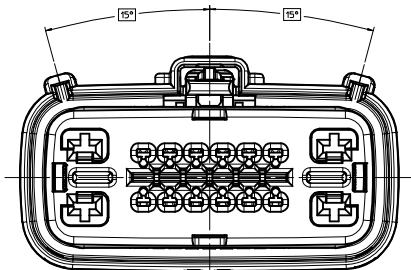
KEY F



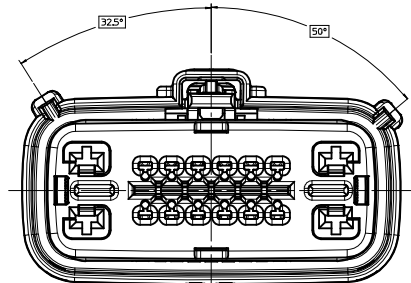
KEY C



KEY G



KEY D

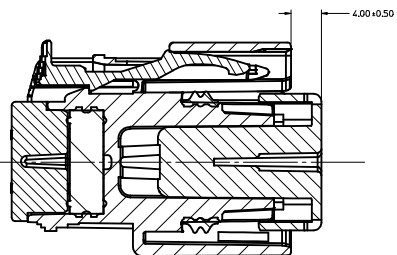
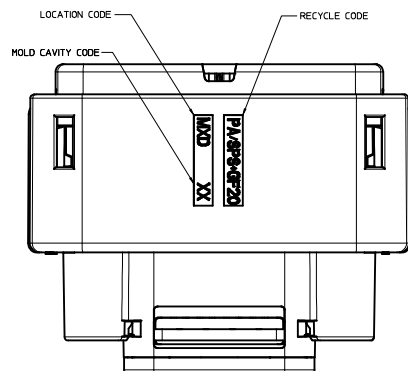
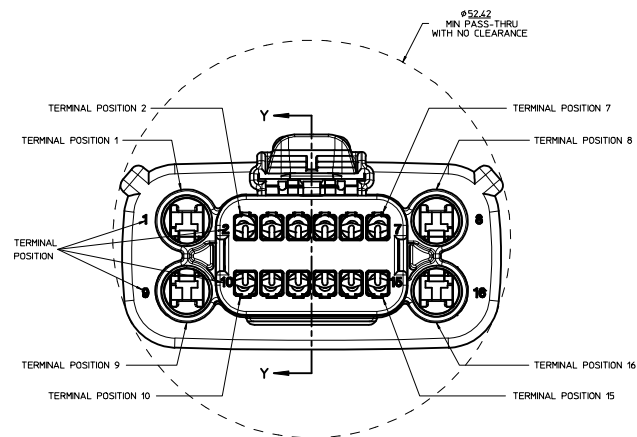
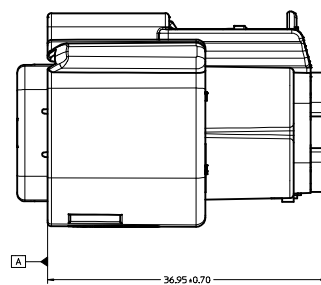
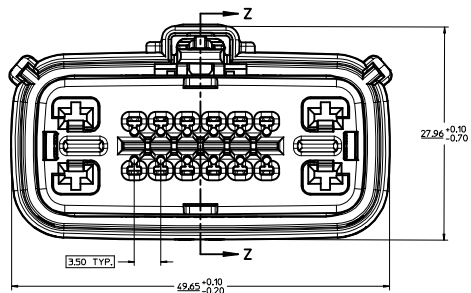
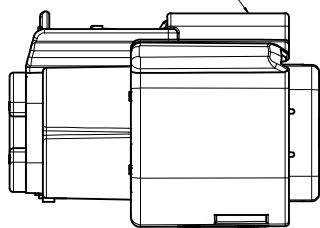


KEY H

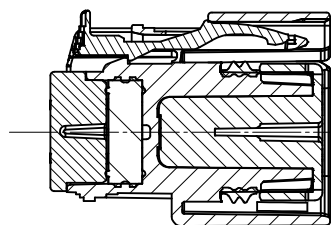
ENTER DESCRIPTION EC NO. UAU2016-0550 DRAWN BY: J. W. BROWN DATE: 2015/10/27 CHECKED BY: J. W. BROWN DATE: 2015/10/27 APPROVED BY: J. W. BROWN DATE: 2015/10/27 REV: BX	QUALITY SYMBOLS ∇=0 ∇=0.1 ∇=0.3	GENERAL TOLERANCES (UNLESS SPECIFIED) <table border="1"> <thead> <tr> <th></th> <th>mm</th> <th>INCH</th> </tr> </thead> <tbody> <tr> <td>4 PLACES</td> <td>± .005</td> <td>± .0005</td> </tr> <tr> <td>3 PLACES</td> <td>± .005</td> <td>± .0005</td> </tr> <tr> <td>2 PLACES</td> <td>± .01</td> <td>± .0005</td> </tr> <tr> <td>1 PLACE</td> <td>± .03</td> <td>± .0005</td> </tr> <tr> <td>0 PLACE</td> <td>± .05</td> <td>± .0005</td> </tr> </tbody> </table> ANGULAR ± 3° DRAFT WHERE APPLICABLE MUST REMAIN WITHIN DIMENSIONS		mm	INCH	4 PLACES	± .005	± .0005	3 PLACES	± .005	± .0005	2 PLACES	± .01	± .0005	1 PLACE	± .03	± .0005	0 PLACE	± .05	± .0005	DIMENSION STYLE MM ONLY DRAWN BY: KCUNNINGHAM DATE: 2011/10/27 CHECKED BY: DATE: APPROVED BY: DATE:	SCALE 3:1 DESIGN UNITS METRIC THIRD ANGLE PROJECTION	TITLE MX150 16 WAY HYBRID RECP T SEALED ASSEMBLY	MATERIAL NO. SEE BOM DOCUMENT NO. SD-33476-161	SHEET NO. 2 OF 8
		mm	INCH																						
	4 PLACES	± .005	± .0005																						
	3 PLACES	± .005	± .0005																						
2 PLACES	± .01	± .0005																							
1 PLACE	± .03	± .0005																							
0 PLACE	± .05	± .0005																							
THIS DRAWING CONTAINS INFORMATION THAT IS PROPRIETARY TO MOLEX INCORPORATED AND SHOULD NOT BE USED WITHOUT WRITTEN PERMISSION																									
molex																									
THIS DRAWING CONTAINS INFORMATION THAT IS PROPRIETARY TO MOLEX INCORPORATED AND SHOULD NOT BE USED WITHOUT WRITTEN PERMISSION																									

RCPT. HRN. CONN.

OPTIONAL LASER MARKING ON THIS SURFACE
SEE NOTE 3g.



PRIMARY LOCK REINFORCEMENT (PLR) SHOWN
IN PRE-STAGED POSITION
SECTION Z-Z



PRIMARY LOCK REINFORCEMENT (PLR) SHOWN
IN FINAL-LOCK POSITION
SECTION Y-Y

ENTER DESCRIPTION EC. NO. 0A02016-0550 DRAWING TITLE 2015/10/27 0 PASSEGGI APPROVED BY 2015/10/27 APPROVED BY 2015/10/27 REV.	QUALITY SYMBOLS ∇=0 ∇=0 ∇=0	GENERAL TOLERANCES (UNLESS SPECIFIED) <table border="1"> <thead> <tr> <th></th> <th>mm</th> <th>INCH</th> </tr> </thead> <tbody> <tr> <td>4 PLACES ±</td> <td>---</td> <td>---</td> </tr> <tr> <td>3 PLACES ±</td> <td>---</td> <td>---</td> </tr> <tr> <td>2 PLACES ±</td> <td>0.1</td> <td>---</td> </tr> <tr> <td>1 PLACE ±</td> <td>0.3</td> <td>---</td> </tr> <tr> <td>0 PLACE ±</td> <td>---</td> <td>---</td> </tr> </tbody> </table> ANGULAR ± 3 ° DRAFT WHERE APPLICABLE MUST REMAIN WITHIN DIMENSIONS		mm	INCH	4 PLACES ±	---	---	3 PLACES ±	---	---	2 PLACES ±	0.1	---	1 PLACE ±	0.3	---	0 PLACE ±	---	---	DIMENSION STYLE MM ONLY DRAWN BY DATE KCUNNINGHAM 2011/10/27 CHECKED BY DATE APPROVED BY DATE	SCALE 4:1 DESIGN UNITS METRIC THIRD ANGLE PROJECTION	TITLE MX150 16 WAY HYBRID RCPT SEALED ASSEMBLY
		mm	INCH																				
	4 PLACES ±	---	---																				
	3 PLACES ±	---	---																				
2 PLACES ±	0.1	---																					
1 PLACE ±	0.3	---																					
0 PLACE ±	---	---																					
MATERIAL NO. SEE BOM	DOCUMENT NO. SD-33476-161	SHEET NO. 3 OF 8	molex THIS DRAWING CONTAINS INFORMATION THAT IS PROPRIETARY TO MOLEX INCORPORATED AND SHOULD NOT BE USED WITHOUT WRITTEN PERMISSION																				

ASSEMBLY DESCRIPTION	ASSEMBLY PART NUMBER	A	B	C	D	E	F	G	H	A	C	D	P	PS	2	3	4	5	6	7	10	11	12	13	14	15				
KEY A, BLACK	33476-4046														P		2					10	11	12						
KEY A, BLACK	33476-4045														P		2						11	12						
KEY A, BLACK	33476-4044														P	CPA					6	7	10	11	12	13	14	15		
KEY A, BLACK	33476-4043														P	CPA					6	7					15			
KEY A, BLACK	33476-4042														P						7						15			
KEY A W/CPA, BLACK	33476-4041														P	CPA					7	10	11	12	13					
KEY A, BLACK	33476-4040														P		3	A	A	7			12	13	14	15				
KEY A, BLACK	33476-4039														P		3						12	13						
KEY A, BLACK	33476-4038														P		2	3				10	11	12	13					
KEY A, BLACK	33476-4037														P		2				7					15				
KEY A W/CPA, BLACK	33476-4036														P	CPA	2				7	10				15				
KEY A, BLACK	33476-4035														P		2	3					11		13	14	15			
KEY A, BLACK	33476-4034														P		2	3	4	5						14	15			
KEY A, BLACK	33476-4033														P		2		6	5	6					14				
KEY B, LT.GRAY	33476-4032														P		2				5	6	7				14	15		
KEY A W/CPA, BLACK	33476-4031														P	CPA					5	6	7				14	15		
KEY A, BLACK	33476-4030														P								11			14	15			
KEY A, BLACK	33476-4029														P								10	11	12	13	14	15		
KEY B, LT.GRAY	33476-4028														P		2				5	6	7				14	15		
KEY B, LT.GRAY	33476-4027														P		2		4	5			10	11	12	13	14	15		
KEY A, BLACK	33476-4026														P		2	3	4	5							14	15		
KEY A W/CPA, BLACK	33476-4025														P	CPA	2				6	7	10	11	12	13	14	15		
KEY A W/CPA, BLACK	33476-4024														P	CPA	2				7	10					14	15		
KEY A W/CPA, BLACK	33476-4023														P	CPA	2	3	4		7	10	11	12	13	14	15			
KEY A W/CPA, BLACK	33476-4022														P	CPA					5		10	11	12	13	14	15		
KEY A, BLACK	33476-4021														P		2	3					10	11			15			
KEY A, BLACK	33476-4020														P		2	3				7	10	11			15			
KEY A, BLACK	33476-4019														P								7	11			15			
KEY A, BLACK	33476-4018														P								7	10			15			
KEY A, BLACK	33476-4017														P						4	5	6	7	10	11	12	13	14	15
KEY C W/CPA, DK GRAY	33476-4016														P	CPA	3	4	6	7	10	11		13	14	15				
ASSEMBLY DESCRIPTION	ASSEMBLY PART NUMBER	A	B	C	D	E	F	G	H	A	C	D	P	PS	2	3	4	5	6	7	10	11	12	13	14	15	STATUS			

PLANNED OBSOLESCENCE
SEE DRAWING SD-34985-8002
FOR REPLACEMENT P/N'S
34985-XXXX

DESCRIPTION	COLOR	MATERIAL
GROMMET CAP	BLACK	SPS/NYLON GF20
MAT SEAL	LIGHT BLUE	INHERENTLY LUBRICATED SILICONE
RING SEAL	GREEN	INHERENTLY LUBRICATED SILICONE
CPA	BRIGHT RED	PBT GF30
SHORTING BAR PLR	NATURAL	PBT GF15
STANDARD PLR	NATURAL	SPS/NYLON GF20
HOUSING KEYING OPTION D	STONE GRAY	SPS/NYLON GF20
HOUSING KEYING OPTION C	DARK GRAY	SPS/NYLON GF20
HOUSING KEYING OPTION A	YELLOW	SPS/NYLON GF20
HOUSING KEYING OPTION H	YELLOW	SPS/NYLON GF20
HOUSING KEYING OPTION G	BROWN	SPS/NYLON GF20
HOUSING KEYING OPTION F	LIGHT GRAY	SPS/NYLON GF20
HOUSING KEYING OPTION E	BLACK	SPS/NYLON GF20
HOUSING KEYING OPTION D	GREEN	SPS/NYLON GF20
HOUSING KEYING OPTION C	BROWN	SPS/NYLON GF20
HOUSING KEYING OPTION B	LIGHT GRAY	SPS/NYLON GF20
HOUSING KEYING OPTION A	BLACK	SPS/NYLON GF20

ABBREVIATION	COMPONENT
A	HOUSING KEY A
B	HOUSING KEY B
C	HOUSING KEY C
D	HOUSING KEY D
E	HOUSING KEY E
F	HOUSING KEY F
G	HOUSING KEY G
H	HOUSING KEY H
GC	GROMMET CAP
M	MAT SEAL
P	PLR, STANDARD
PS	PLR, SHRT BAR LIFTER
R	RING SEAL
CPA	CPA

ENTER DESCRIPTION EC NO: 0402016-0550 DRAWING: 011111-0111 2015/10/27 APPR: WOSNYI 2015/10/28 REV:	QUALITY SYMBOLS ▽=0 ▽=1 ▽=2	GENERAL TOLERANCES (UNLESS SPECIFIED) mm INCH 4 PLACES ±.000 ±.000 3 PLACES ±.005 ±.005 2 PLACES ±.010 ±.010 1 PLACE ±.030 ±.030 0 PLACE ±.050 ±.050	DIMENSION STYLE MM ONLY DRAWN BY DATE KCUNNINGHAM 2011/10/27 CHECKED BY DATE	SCALE 2:1 DESIGN UNITS METRIC THIRD ANGLE PROJECTION	TITLE MX150 16 WAY HYBRID RECP2 SEALED ASSEMBLY	MATERIAL NO. 9999999999 DOCUMENT NO. SD-33476-161 SHEET NO. 8 OF 8
	DRAFT WHERE APPLICABLE MUST REMAIN WITHIN DIMENSIONS		THIS DRAWING CONTAINS INFORMATION THAT IS PROPRIETARY TO MOLEX INCORPORATED AND SHOULD NOT BE USED WITHOUT WRITTEN PERMISSION			
	ANGLUAR ± 3°					
	APPROVED BY DATE					
	SIZE					