

10

9

8

7

6

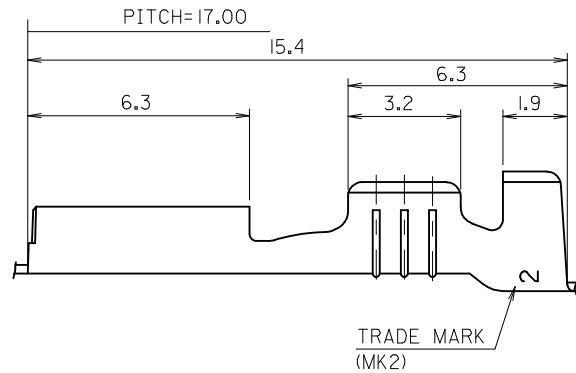
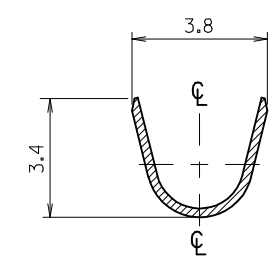
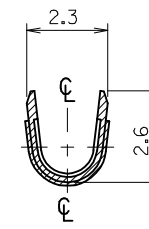
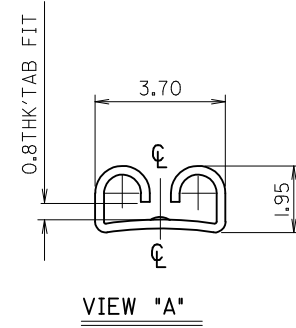
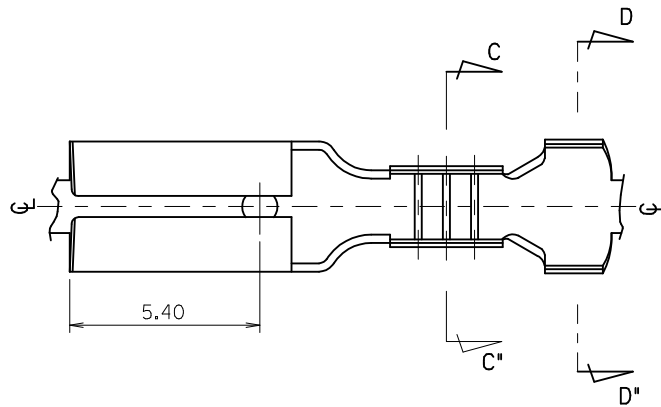
5

4

3

2

1



SECTION: C-C'

SECTION: D-D'

NOTES.

1. MATERIAL : BRASS
2. FINISH : 35711-1100 : UNPLATED
35711-1110 : © PRE-TIN PLATED
0.8~1.8 μm TIN PLATING
OVERALL 0.3~0.8μm COPPER PLATING
3. PRODUCT SPECIFICATION : PS-35702-001
PS-35827-001
4. MATES WITH : 0.8t TAB
5. APPLICABLE WIRE RANGE : AWG #22~#20



REVISED EC NO: KOR2009-0111 DRWN: JHPARK01 2009/01/30 CHKD: WY YANG 2009/01/30 APPR: YUNSTIK IM 2009/01/30	QUALITY SYMBOLS =0 =0	GENERAL TOLERANCES (UNLESS SPECIFIED)		DIMENSION STYLE MM ONLY		SCALE 8:1	DESIGN UNITS METRIC	THIRD ANGLE PROJECTION			
		4 PLACES ± --- ± ---	3 PLACES ± --- ± ---	DRAWN BY WY YANG	DATE 1993/04/15	TITLE .110 SLIP-ON RECEPTACLE					
		2 PLACES ± --- ± ---	1 PLACE ± 0.30 ± ---	CHECKED BY BK CHOI	DATE 1993/04/15	APPROVED BY CW LEE					
		ANGULAR ± --- °		MATERIAL NO. SEE NOTE		DOCUMENT NO. SD-35711-11*0		SHEET NO. 1 OF 01			
DRAFT WHERE APPLICABLE MUST REMAIN WITHIN DIMENSIONS		SIZE A3		THIS DRAWING CONTAINS INFORMATION THAT IS PROPRIETARY TO MOLEX INCORPORATED AND SHOULD NOT BE USED WITHOUT WRITTEN PERMISSION							

9

8

7

6

5

4

3

2

1