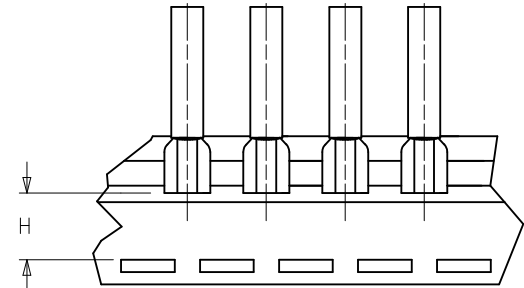
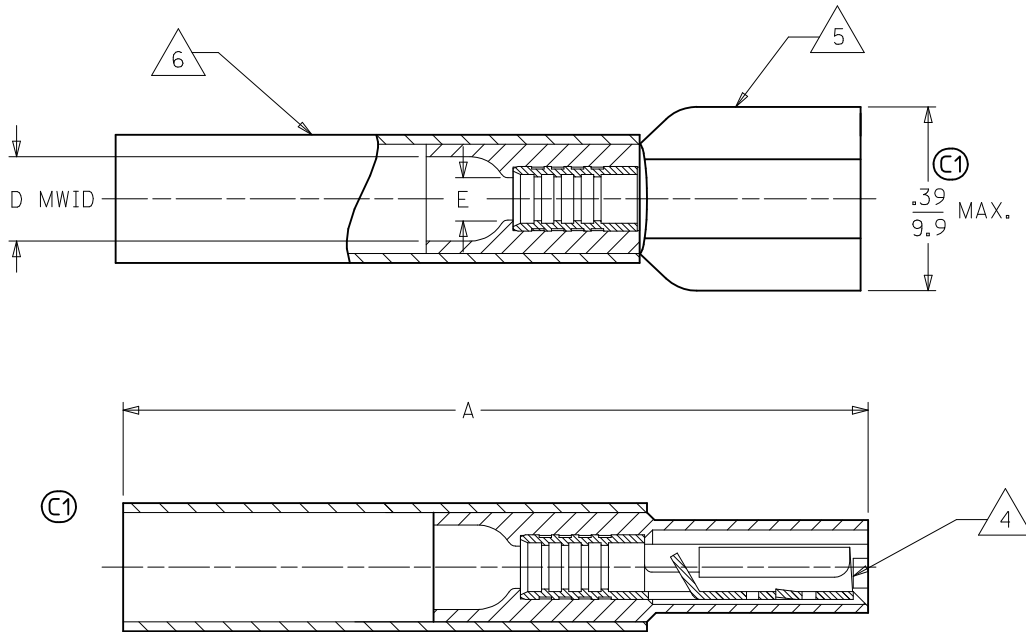


MATERIAL NUMBER	ENGINEERING NUMBER	TAPE MATERIAL NUMBER	TAPE ENGINEERING NUMBER	WIRE SIZE AWG	WIRE SIZE MM SQ.	FITS MALE TAB	PERMA-SEAL COLOR	Ⓢ A MAX.	Ⓢ D MWID	E Ⓢ MIN	H NOMINAL
191640017	SAA-9261	191640018	SAA-9261T	22-18	.25-1.5	.250 X .032	RED	1.50/38.1	.17/4.3	.081/2.05	.55/14.0
191640050	SBB-9263	191640051	SBB-9263T	16-14	1.0-2.5	.250 X .032	BLUE	1.50/38.1	.18/4.5	.081/2.05	.55/14.0
191640076	SC-9281	191640305	SC-9281T	12-10	4.0-6.0	.250 X .032	YELLOW	1.52/38.6	.23/5.8	.140/3.56	.56/14.2



TAPE MOUNTING DETAIL

NOTES:

- Ⓢ 1. FEMALE RECEPTACLE CONFORMS TO UL310.
- 2. ALL DIMENSIONS SHOWN ARE BEFORE SHRINK TUBING IS HEATED.
- 3. "MWID" DENOTES MAX. WIRE INSULATION DIA.
- 4. TAB MATERIAL: .018 THK, BRASS, PLATING, TIN.
- 5. INSULATION MAT'L: MOLDED NYLON
- Ⓢ 6. NYLON TUBING WITH HOTMELT INNER LINER. SEE CHART FOR COLOR.
- Ⓢ 7. ALL PARTS ARE ROHS COMPLIANT.

CORRECT SPECS EC NO: WNA2010-0115 DRW: WETHRODAHL 2010/02/16 CHKD: JMACNEIL 2010/02/18 APPR: JMACNEIL 2010/02/22	QUALITY SYMBOLS	GENERAL TOLERANCES (UNLESS SPECIFIED)	DIMENSION STYLE	SCALE	DESIGN UNITS	THIRD ANGLE PROJECTION	
	▽=0	mm INCH	IN/MM	---	INCH		
	▽=0	4 PLACES ± --- ± ---	DRAWN BY DATE			TITLE	
		3 PLACES ± --- ± ---	BRE 2002/10/29			PERMA-SEAL COUPLER FEMALE RECEPTACLE	
	2 PLACES ± --- ± ---	CHECKED BY DATE					
	1 PLACE ± --- ± ---	HEB 2002/10/29					
	ANGULAR ± ---°	APPROVED BY DATE					
		RWD 2002/10/29					
		MATERIAL NO.					
		SEE CHART					
		SIZE B					
		THIS DRAWING CONTAINS INFORMATION THAT IS PROPRIETARY TO MOLEX INCORPORATED AND SHOULD NOT BE USED WITHOUT WRITTEN PERMISSION					
					DOCUMENT NO.	SHEET NO.	
					SD-19164-020	1 OF 1	