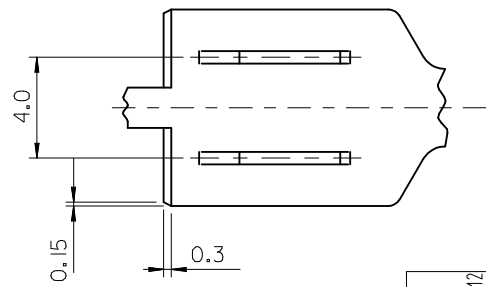
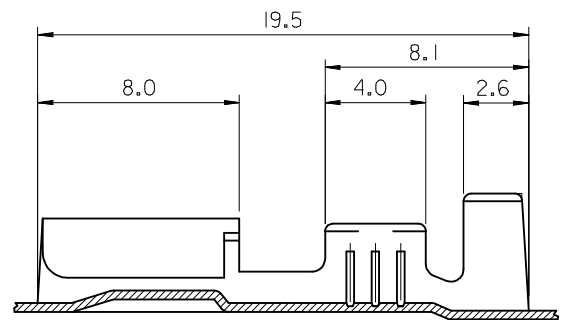
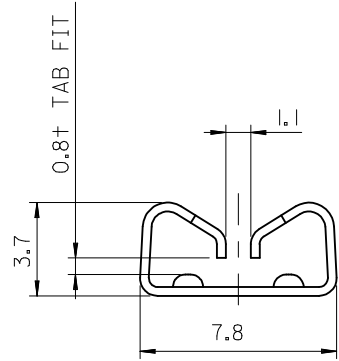


SECTION A-A

SECTION B-B



PART NO.	a	b	Rc	d	e	Rf	WIRE RANGE (mmSQ)	Q'TY/REEL	FINISH	REMARK (OPTION)	
35427-9700									UNPLATED	---	
-9702	S	2.8	2.8	0.9	3.8	3.8	1.5	0.3 ± 0.5	5000	PLATED	---
-9710									UNPLATED	MARK "H"	
35427-9800									UNPLATED	---	
-9802	M	3.0	3.5	1.2	5.0	5.0	2.0	0.85 ± 1.25	5000	PLATED	---
-9810									UNPLATED	MARK "H"	
35427-9900									UNPLATED	---	
-9902	L	5.2	4.6	2.0	6.3	6.3	2.5	2.0 ± 3.0	4000	PLATED	---
-9910									UNPLATED	MARK "H"	

NOTES

- MATERIAL : BRASS (C2600), THICK = 0.35mm
- TENSION (35427-970\*,980\*,990\*)
  - INSERTION FORCE(INITIAL) : 0.9 ~ 1.2 kgf
  - WITHDRAWAL FORCE(6 TIMES) : 0.4 kgf MIN.
- TENSION (35427-971\*,981\*,991\*) "H" MARK
  - INSERTION FORCE(INITIAL) : 1.5 ~ 2.0 Kgf
  - WITHDRAWAL FORCE(6 TIMES) : 0.8Kg f MIN.

<b>CHANGED NOTE #2</b> EC NO: KTR2013-0047 DRWN: HIMOON 2013/06/12 CHKD: CHKD: APPR: JYCHO1 2013/07/29	QUALITY SYMBOLS ▽=0 ◻=0	GENERAL TOLERANCES (UNLESS SPECIFIED) mm INCH 4 PLACES ± --- ± --- 3 PLACES ± --- ± --- 2 PLACES ± 0.3 ± --- 1 PLACE ± 0.3 ± --- ANGULAR ± 3 °	DIMENSION STYLE MM ONLY DRAWN BY HIMOON DATE 2013/06/12 CHECKED BY BCYOON DATE 2013/06/12 APPROVED BY DATE	SCALE 5:1 DESIGN UNITS METRIC THIRD ANGLE PROJECTION	TITLE POWERMATE FEMALE TERM. (S,M,L)
	MATERIAL NO. SEE TABLE DOCUMENT NO. SD-35427-002 SHEET NO. 1 OF 1	MOLEX INCORPORATED			
	DRAFT WHERE APPLICABLE MUST REMAIN WITHIN DIMENSIONS				
	THIS DRAWING CONTAINS INFORMATION THAT IS PROPRIETARY TO MOLEX INCORPORATED AND SHOULD NOT BE USED WITHOUT WRITTEN PERMISSION				