

10 9 8 7 6 5 4 3 2 1

F

E

D

C

B

A

F

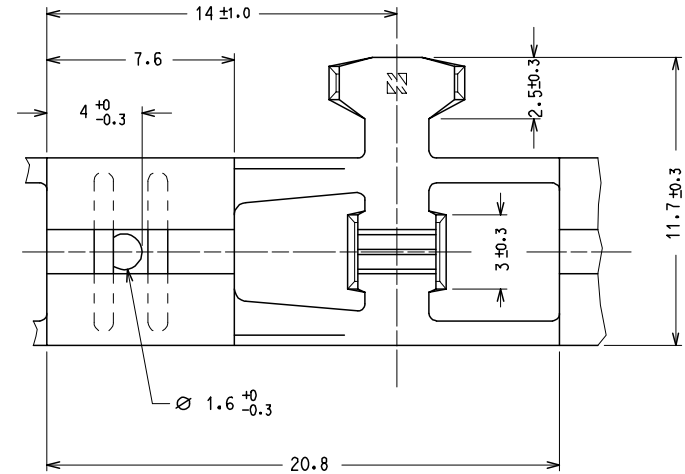
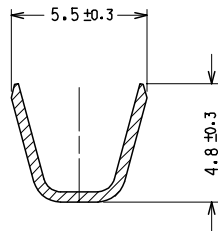
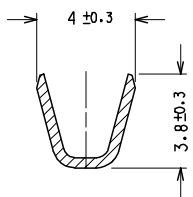
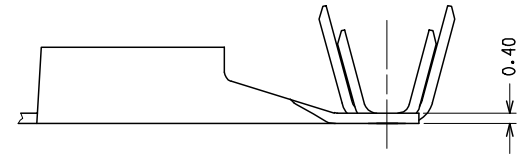
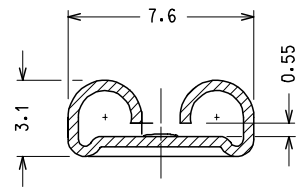
E

D

C

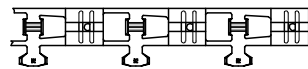
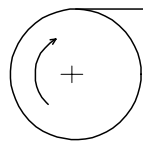
B

A



CARATTERISTICHE PRODOTTO SECONDO PS-94030-001  
 PRODUCT CHARACTERISTICS ACCORDING TO PS-94030-002

SENSO DI AVANZAMENTO PER MINI APPLICATORE  
 DIRECTION OFF TOP OF REEL



CODICE P/N	MATERIALE MATERIAL	FINITURA PLATING	NOTE NOTE	CONFEZIONE STANDARD STANDARD PACKING QUANTITY
94030-5010	OTTONE BRASS	GREGGIO/ UNPL*	---	15.000 pz. in 3 bobine per scatola 15.000 pcs. per box in 3 reels
94030-5011		STAGNATO/ TIN*	---	
94030-5018		STAGNATO/ TIN*	AVVOLTO CON CARTA INTERMEDIA WOUND WITH INTERLEAF PAPER	

SPQ : 15000 pcs.

Std descr.: FEM TERM 6.3/0.8 RA BRS (insert plating \*) 1-2.5

EC NO: Z2005-0030 DRWN:FGOTTARD 2004/09/23 CHKD:RSANDANO 2004/09/23 APPR:GZUIN 2004/09/23	QUALITY SYMBOLS	GENERAL TOLERANCES (UNLESS SPECIFIED)	DIMENSION STYLE	SCALE	DESIGN UNITS	FIRST ANGLE PROJECTION
	▽=0 □=0	mm INCH 4 PLACES ± --- ± --- 3 PLACES ± --- ± --- 2 PLACES ± 0.1 ± --- 1 PLACE ± 0.2 ± --- ANGULAR ± 2 °	MM ONLY	5:1	METRIC	
	DESCRIPTION	DRAWN BY DATE	TITLE	MOLEX INCORPORATED SD-94030-037		
	REV	CHECKED BY DATE APPROVED BY DATE MATERIAL NO. DOCUMENT NO.	SEE CHART THIS DRAWING CONTAINS INFORMATION THAT IS PROPRIETARY TO MOLEX INCORPORATED AND SHOULD NOT BE USED WITHOUT WRITTEN PERMISSION	SHEET NO. 1 OF 1		

9 8 7 6 5 4 3 2 1