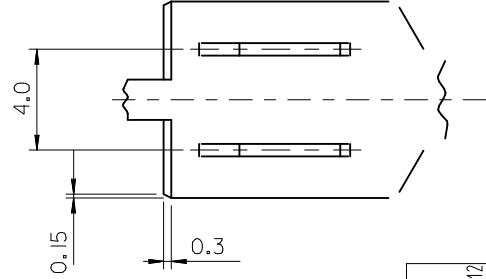
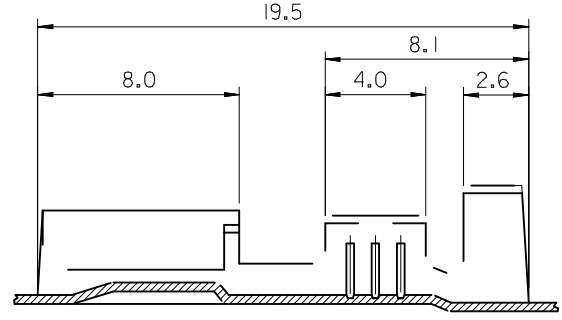
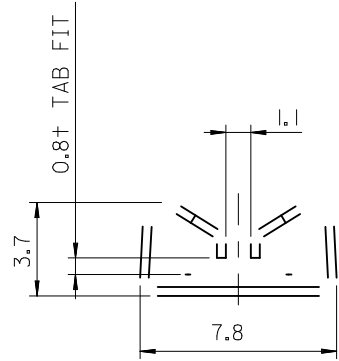


SECTION A-A

SECTION B-B



PART NO.	a	b	Rc	d	e	Rf	WIRE RANGE (mmSQ)	Q'TY/REEL	FINISH	REMARK (OPTION)	
35427-9700									UNPLATED	---	
-9702	S	2.8	2.8	0.9	3.8	3.8	1.5	0.3 ± 0.5	5000	PLATED	---
-9710									UNPLATED	MARK "H"	
35427-9800									UNPLATED	---	
-9802	M	3.0	3.5	1.2	5.0	5.0	2.0	0.85 ± 1.25	5000	PLATED	---
-9810									UNPLATED	MARK "H"	
35427-9900									UNPLATED	---	
-9902	L	5.2	4.6	2.0	6.3	6.3	2.5	2.0 ± 3.0	4000	PLATED	---
-9910									UNPLATED	MARK "H"	

NOTES

- 1. MATERIAL : BRASS (C2600), THICK = 0.35mm
- △ 2. TENSION (35427-970\*,980\*,990\*)
- 
- 
- TENSION (35427-97|\*,9·|\* |\* "H" - \K
- INSERTION FORCE(INITIAL) : 1.5 2.0 KgF
- WITHDRAWAL FORCE(6 TIMES) : 0.8KgF MIN.

<b>CHANGED NOTE #2</b> EC NO: KTR2013-0047 DRWN: HIMOON 2013/06/12 CHKD: APPR: JYCHO1 2013/07/29	QUALITY SYMBOLS ▽=0 Ⓢ=0	GENERAL TOLERANCES (UNLESS SPECIFIED) mm INCH 4 PLACES ± --- ± --- 3 PLACES ± --- ± --- 2 PLACES ± 0.3 ± --- 1 PLACE ± 0.3 ± --- ANGULAR ± 3 °	DIMENSION STYLE MM ONLY DRAWN BY HIMOON DATE 2013/06/12 CHECKED BY BCYOON DATE 2013/06/12 APPROVED BY DATE	SCALE 5:1 DESIGN UNITS METRIC THIRD ANGLE PROJECTION	TITLE POWERMATE FEMALE TERM. (S,M,L) MOLEX INCORPORATED DOCUMENT NO. SD-35427-002 SHEET NO. 1 OF 1
	DRAFT WHERE APPLICABLE MUST REMAIN WITHIN DIMENSIONS	MATERIAL NO. SEE TABLE	THIS DRAWING CONTAINS INFORMATION THAT IS PROPRIETARY TO MOLEX INCORPORATED AND SHOULD NOT BE USED WITHOUT WRITTEN PERMISSION		
	SIZE A3				